

## Central Lancashire Online Knowledge (CLOK)

Title	Testing for relics of past strong buckling events in edge-on galaxies: Simulation predictions and data from S4G
Type	Article
URL	<a href="https://clock.uclan.ac.uk/44489/">https://clock.uclan.ac.uk/44489/</a>
DOI	<a href="https://doi.org/10.1093/mnras/stac3047">https://doi.org/10.1093/mnras/stac3047</a>
Date	2022
Citation	Cuomo, Virginia, Debattista, Victor P, Racz, Sarah, Anderson, Stuart Robert, Erwin, Peter, Gonzalez, Oscar A, Powell, J W, Corsini, Enrico Maria, Morelli, Lorenzo et al (2022) Testing for relics of past strong buckling events in edge-on galaxies: Simulation predictions and data from S4G. Monthly Notices of the Royal Astronomical Society. ISSN 0035-8711
Creators	Cuomo, Virginia, Debattista, Victor P, Racz, Sarah, Anderson, Stuart Robert, Erwin, Peter, Gonzalez, Oscar A, Powell, J W, Corsini, Enrico Maria, Morelli, Lorenzo and Norris, Mark A

It is advisable to refer to the publisher's version if you intend to cite from the work.  
<https://doi.org/10.1093/mnras/stac3047>

For information about Research at UCLan please go to <http://www.uclan.ac.uk/research/>

All outputs in CLOK are protected by Intellectual Property Rights law, including Copyright law. Copyright, IPR and Moral Rights for the works on this site are retained by the individual authors and/or other copyright owners. Terms and conditions for use of this material are defined in the <http://clock.uclan.ac.uk/policies/>

# Testing for relics of past strong buckling events in edge-on galaxies: simulation predictions and data from S<sup>4</sup>G

Virginia Cuomo<sup>1</sup>,<sup>1</sup>★ Victor P. Debattista<sup>2</sup>, Sarah Racz<sup>3</sup>, Stuart Robert Anderson<sup>2</sup>, Peter Erwin<sup>4,5</sup>, Oscar A. Gonzalez<sup>6</sup>, J. W. Powell<sup>7</sup>, Enrico Maria Corsini<sup>8,9</sup>, Lorenzo Morelli<sup>1</sup> and Mark A. Norris<sup>2</sup>

<sup>1</sup>*Instituto de Astronomía y Ciencias Planetarias, Universidad de Atacama, Avenida Copayapu 485, 1350000 Copiapó, Chile*

<sup>2</sup>*Jeremiah Horrocks Institute, University of Central Lancashire, Preston PR1 2HE, UK*

<sup>3</sup>*Department of Physics, The University of Texas at Austin, Austin, TX, 78712, USA*

<sup>4</sup>*Max-Planck-Institut für extraterrestrische Physik, Giessenbachstraße, D-85748 Garching, Germany*

<sup>5</sup>*Universitäts-Sternwarte München, Scheinerstraße 1, D-81679 München, Germany*

<sup>6</sup>*UK Astronomy Technology Centre, Royal Observatory, Blackford Hill, Edinburgh EH9 3HJ, UK*

<sup>7</sup>*Physics Department, Reed College, Portland, OR, 97202, USA*

<sup>8</sup>*Dipartimento di Fisica e Astronomia ‘G. Galilei’, Università di Padova, vicolo dell’Osservatorio 3, I-35122 Padova, Italy*

<sup>9</sup>*INAF – Osservatorio Astronomico di Padova, vicolo dell’Osservatorio 2, I-35122 Padova, Italy*

Accepted 2022 October 18. Received 2022 October 17; in original form 2022 February 8

## ABSTRACT

The short-lived buckling instability is responsible for the formation of at least some box/peanut (B/P) shaped bulges, which are observed in most massive,  $z = 0$ , barred galaxies. Nevertheless, it has also been suggested that B/P bulges form via the slow trapping of stars on to vertically extended resonant orbits. The key difference between these two scenarios is that when the bar buckles, symmetry about the mid-plane is broken for a period of time. We use a suite of simulations (with and without gas) to show that when the buckling is sufficiently strong, a residual mid-plane asymmetry persists for several Gyrs after the end of the buckling phase, and is visible in simulation images. On the other hand, images of B/P bulges formed through resonant trapping and/or weak buckling remain symmetric about the mid-plane. We develop two related diagnostics to identify and quantify mid-plane asymmetry in simulation images of galaxies that are within  $3^\circ$  of edge-on orientation, allowing us to test whether the presence of a B/P-shaped bulge can be explained by a past buckling event. We apply our diagnostics to two nearly edge-on galaxies with B/P bulges from the *Spitzer* Survey of Stellar Structure in Galaxies, finding no mid-plane asymmetry, implying these galaxies formed their bulges either by resonant trapping or by buckling more than  $\sim 5$  Gyr ago. We conclude that the formation of B/P bulges through strong buckling may be a rare event in the past  $\sim 5$  Gyr.

**Key words:** galaxies: bar – galaxies: bulges – galaxies: evolution – galaxies: photometry – galaxies: structure.

## 1 INTRODUCTION

Most barred galaxies with stellar mass  $M_* \gtrsim 2.5 \times 10^{10} M_\odot$  host box/peanut-shaped bulges (hereafter B/P bulges, Erwin & Debattista 2013; Laurikainen et al. 2014; Erwin & Debattista 2017; Kruk et al. 2019). B/P bulges can easily be identified in edge-on galaxies from the shape that gives them their name (Bureau & Freeman 1999; Lütticke, Dettmar & Pohlen 2000; Chung & Bureau 2004; Bureau et al. 2006; Yoshino & Yamauchi 2015). The Milky Way itself hosts a B/P bulge, which is sometimes referred to as the X-shaped bulge because our unique perspective allows us to distinguish the two arms of the density peaks along the line of sight (LOS; McWilliam & Zoccali 2010; Nataf et al. 2010; Saito et al. 2011; Ness & Lang 2016).

The first 3D simulations of barred galaxies revealed that bars readily form a B/P bulge (Combes & Sanders 1981), which can be supported by several resonant and non-resonant orbit families

(Pfenniger 1984; Combes et al. 1990; Pfenniger & Friedli 1991; Patsis, Skokos & Athanassoula 2002; Athanassoula 2005; Portail et al. 2015; Abbott et al. 2017). Two main mechanisms have been proposed to explain how barred galaxies acquire a B/P bulge: the buckling (bending) instability of the bar (Toomre 1966; Raha et al. 1991; Merritt & Sellwood 1994; Debattista et al. 2006; Saha, Pfenniger & Taam 2013; Collier 2020; Łokas 2020) and the secular trapping of stars on to resonant orbits as the bar evolves (Combes & Sanders 1981; Combes et al. 1990; Quillen 2002; Quillen et al. 2014). Recently, Sellwood & Gerhard (2020) unambiguously demonstrated the formation of B/P bulges via secular trapping of stars at the 2:1 vertical resonance, without any buckling.

The buckling instability represents a short-lived phase during which a bar bends and develops vertical asymmetry, typically with the inner portion moving upwards (downwards) while the outer portion moves downwards (upwards) in an  $m = 2$  pattern as seen from above (Raha et al. 1991; Merritt & Sellwood 1994). This instability arises because the formation of the bar increases the radial random motion but does not appreciably increase the vertical motions. The resulting anisotropic distribution is unstable and drives the buckling,

\* E-mail: [virginia.cuomo@uda.cl](mailto:virginia.cuomo@uda.cl)

which in pure  $N$ -body simulations (i.e. without gas) often occurs shortly after the bar forms (Raha et al. 1991; Debattista et al. 2006; Saha et al. 2013). Buckling leads to significant vertical heating, and thus thickening, while the bar itself becomes more centrally concentrated. The buckling instability can occur more than once during the secular growth of a bar. Martinez-Valpuesta, Shlosman & Heller (2006) showed that continued growth of the bar can trigger a second buckling event, leading to the formation of a new B/P bulge. During the second buckling, the bar remains vertically asymmetric for a longer time compared with the first one. The buckling instability has been suggested to explain the B/P bulge of our Galaxy (e.g. Li & Shen 2015; Khoperskov et al. 2019). Debattista et al. (2017) showed that even weak recurrent buckling is able to produce many of the trends observed in the Milky Way’s bulge, such as an X shape traced only by the metal-rich stars, a vertical metallicity gradient, and a weaker bar in the oldest stars (e.g. Zoccali et al. 2008; Johnson et al. 2013; Ness et al. 2013; Gonzalez et al. 2015; Rojas-Arriagada et al. 2017; Zoccali et al. 2017).

B/P bulges may also form via the slow trapping of stars on to vertically extended resonant orbits during the secular growth of the bar (Combes et al. 1990; Quillen 2002; Quillen et al. 2014; Sellwood & Gerhard 2020). No deviation from symmetry about the mid-plane is induced by this mode of B/P formation. While the expected trends from the trapping scenario have not been explored in detail (but see Chiba & Schönrich 2021), it is likely to lead to results similar to a mild buckling case. The key difference between these two B/P formation scenarios is that in the strong buckling case, mid-plane symmetry is broken for a period of time and a mid-plane asymmetry is produced, which is not present in the resonant trapping case.

Because the buckling event is relatively short-lived, observationally testing the importance of buckling is difficult. Less than 10 barred galaxies are known to be currently buckling (Erwin & Debattista 2016; Li, Ho & Barth 2017; Xiang et al. 2021), which is insufficient to infer which is the dominant mechanism for forming B/P bulges. Erwin & Debattista (2016) presented a photometric and kinematic analysis of two buckling galaxies, NGC 4569 and NGC 3227. Based on their initial sample, they estimated that the fraction of barred galaxies with B/P bulges is consistent with all of them having formed via buckling. Observational studies showed that the fraction of B/P bulges depends strongly on a galaxy’s stellar mass,  $M_*$ , (Erwin & Debattista 2017; Erwin et al., in preparation), with a sharp rise at  $M_* \simeq 2.5 \times 10^{10} M_\odot$  (see also Li et al. 2017), and no apparent dependence on the gas fraction, despite theoretical studies showing that gas can suppress buckling (Berentzen et al. 1998; Debattista et al. 2006; Berentzen et al. 2007; Wozniak & Michel-Dansac 2009). This critical mass seems to be unchanged out to a redshift  $z \sim 1$  (Kruk et al. 2019). Whereas a mass dependence for instabilities is quite plausible, why galaxies would avoid secular trapping below a particular mass may seem harder to understand. Nevertheless, the Illustris TNG50 cosmological simulation suggests that the fraction of B/P bulges decreases at lower mass because the corresponding bars form later and may not yet have had time to buckle (Anderson et al., in preparation).

To gain further insight into the formation of a B/P bulge, it would be useful to be able to distinguish whether this central structure formed via strong buckling or via secular trapping. Since strong buckling breaks the mid-plane symmetry (Raha et al. 1991; O’Neill & Dubinski 2003; Debattista et al. 2006), the rate of vertical scattering of stars does not have to be equal on the two sides of the mid-plane. As a result, large-scale breaking of symmetry during strong buckling may leave a long-lasting density mid-plane asymmetry.

Such mid-plane asymmetries have been already pointed out in many simulations, including the best-fitting Milky Way model of Gardner et al. (2014). Likewise, the Milky Way model of Shen et al. (2010) is visibly asymmetric, as can be seen in the visualization of Li & Shen (2015). Further examples come from the models of Saha et al. (2013) and Smirnov & Sotnikova (2018), which are clearly asymmetric, as well as from cosmological simulations (Fragkoudi et al. 2020). In this study, we use a suite of simulations (with and without gas) to investigate the connection between the mode of B/P formation and the resulting mid-plane asymmetry/symmetry. Therefore, we present mid-plane asymmetry diagnostics to identify the formation mechanism of B/P bulges, suitable for galaxies that are within  $3^\circ$  of the edge-on orientation.

We then consider a sample of nearly edge-on galaxies from the *Spitzer* Survey of Stellar Structure in Galaxies (S<sup>4</sup>G; Sheth et al. 2010; Muñoz-Mateos et al. 2013; Querejeta et al. 2015) hosting a B/P bulge to conduct a pilot study. We apply the mid-plane asymmetry diagnostics to discuss the formation scenario of the observed B/P bulges and compare to predictions from the simulations.

This paper is organized as follows: in Section 2, we present the set of simulations and the diagnostics developed to identify mid-plane asymmetries, and we discuss the prospects for detecting such asymmetries in real galaxies in Section 3. In Section 4, we present the sample of galaxies used to hunt for mid-plane asymmetries, while in Section 5, we present the results. We discuss our results in Section 6 and summarize and conclude in Section 7. Finally, we include in a series of appendices available online, A, B, and C, complementary material related to our analysis. Where necessary, we adopt the cosmological parameters  $\Omega_m = 0.308$ ,  $\Omega_\Lambda = 0.692$ , and  $H_0 = 67.8 \text{ km s}^{-1} \text{ Mpc}^{-1}$  (Planck Collaboration 2016).

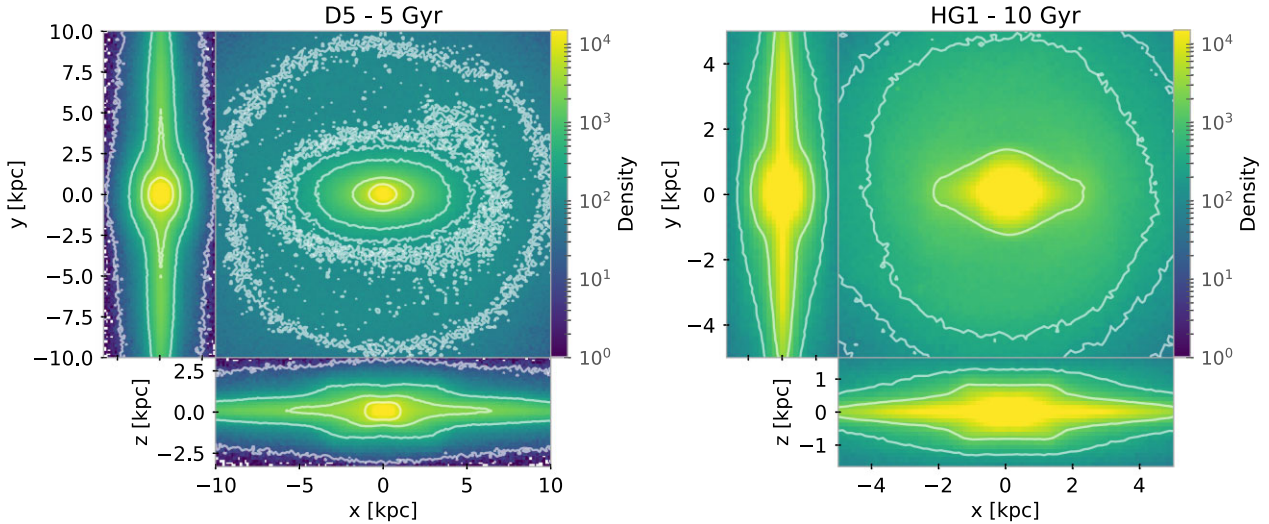
## 2 MID-PLANE ASYMMETRY FORMATION AND EVOLUTION IN MODELS

A buckling event is characterized by a period when the morphology of the bar deviates from mid-plane symmetry. For a strong buckling event, the asymmetry is visible by eye and may affect a large region of the galaxy, whereas gentle buckling causes only a mild deviation from symmetry, and requires a careful analysis to identify.

We explore asymmetries using two high-resolution simulations from Debattista et al. (2017). First, we consider the pure  $N$ -body simulation (no gas or star formation) referred to as model D5 in Debattista et al. (2017), which suffered a modest buckling event during its evolution. Buckling in model D5 occurs at  $t = 4 \text{ Gyr}$ : the global amplitude  $A_{\text{buck}}$ , defined as the  $m = 2$  bending amplitude (Raha et al. 1991; Debattista et al. 2006, 2020), reaches a value of  $\sim 0.04 \text{ kpc}$  at  $\sim 4 \text{ Gyr}$ . The bar abruptly weakens as the buckling occurs, with the normalized amplitude of the  $m = 2$  density distribution,  $A_{\text{bar}}$ , dropping from  $\sim 0.2$  to  $\sim 0.1$ . After the instability, the bar slowly recovers strength, reaching  $A_{\text{bar}} \sim 0.15$  by  $t = 10 \text{ Gyr}$  (see fig. 2 of Debattista et al. 2020, where model D5 is denoted as model 1).

We also consider the star-forming simulation from Debattista et al. (2017), which, following Gardner et al. (2014), we refer to as model HG1. This model undergoes no strong buckling event but appears to suffer from weak, but recurrent, small-scale buckling activity:  $A_{\text{buck}}$  remains below  $\sim 0.0008 \text{ kpc}$ , while  $A_{\text{bar}}$  oscillates between 0.1 and 0.15 during the 10 Gyr of its evolution (see Anderson et al. 2022). Nevertheless, a B/P bulge develops by  $t = 5 \text{ Gyr}$ . This model includes gas, from which all stars form.

Besides these two models, which are typical of the type of behaviours expected, we have repeated our analysis using several other barred simulations. In particular, we have analysed the pure



**Figure 1.** Maps of the surface number density of models D5 (at 5 Gyr, left-hand column) and HG1 (at 10 Gyr, right-hand column) seen face-on (upper-right panel), side-on (lower-right panel), and end-on (left-hand panel). Some isocontours of the surface number density (white lines) are shown for each viewing geometry. In all the plots, the bar major axis coincides with the  $x$ -axis.

$N$ -body models D8, T1, and the SD1 which are studied in detail in Anderson et al. (2022), where they are denoted as model 4, T1, and SD1, respectively. We have verified that the results are qualitatively consistent with those presented here. In Appendix A, we show the results for all the remaining models. We base our asymmetry analysis on model D5 because its asymmetries are rather mild and should be more difficult to detect them observationally; this reference model allows us to explore the detectability of the mid-plane asymmetry and to test the limits of our diagnostics.

Fig. 1 shows the face-on, side-on, and end-on views of the projected logarithmically scaled surface number density of the particles of the two models, centred on the origin of the  $(x, y)$  plane, with the bar aligned with the  $x$ -axis, where the galaxy centre is located at  $(x, y, z) = (0, 0, 0)$ . We consider the snapshot at 5 Gyr (1 Gyr after the buckling event) for model D5 and the snapshot at 10 Gyr (the end of the simulation) for model HG1. Surface density contours are shown in white: they appear boxy in the central regions of both models in the  $(x, z)$  plane (the side-on view, where the disc position angle, PA, is aligned with the  $x$ -axis and  $i = 90^\circ$ , while the bar is aligned with the  $x$ -axis). A slight asymmetry with respect to the mid-plane is barely visible by eye in model D5, which we explore below.

## 2.1 Density mid-plane asymmetry diagnostics

We start by applying the median filtering unsharp mask technique to the logarithmically scaled projected number density of the particles for the edge-on view of the models, with the bar seen edge-on. This technique has been used on both observational and simulated data (e.g. Athanassoula 2005; Bureau et al. 2006) because it highlights the X-shaped structure in the central regions of the galaxies, which is associated with a B/P bulge (Bureau et al. 2006). We convolve the image of the projected number density of the particles of the models with a circular Gaussian and manually vary the corresponding standard deviation, to highlight the X shape. We use the PYTHON-SCIPY function GAUSSIAN\_FILTER and subtract the convolved image from the original one.

To better visualize the mid-plane asymmetry observed in Fig. 1 for model D5, we develop two related diagnostics. We first map the

mid-plane asymmetry in the surface density,  $A_\Sigma(x, z)$  as:

$$A_\Sigma(x, z) = \frac{\Sigma(x, z) - \Sigma(x, -z)}{\Sigma(x, z) + \Sigma(x, -z)} \quad (1)$$

where  $\Sigma(x, z)$  is the projected surface number density of the particles at each position of the image of the edge-on view of the models. We refer to the resulting figure as the ‘mid-plane asymmetry map’.

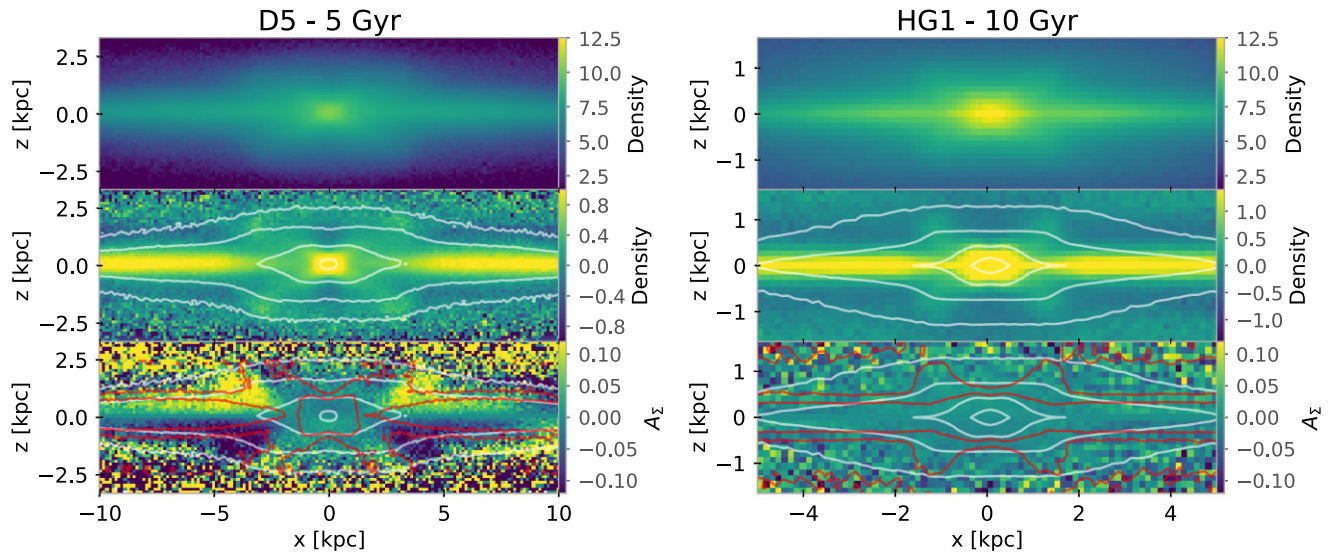
Fig. 2 shows the side-on views (top row) of models D5 (left-hand column) and HG1 (right-hand column), and the corresponding unsharp masked images (middle row), which reveal the characteristic X-shaped structure in both models. The bottom row shows the mid-plane asymmetry maps. Some surface density contours of the side-on views are shown in white, while some contours of the unsharp mask are in red. Inspection of the unsharp mask of model D5 confirms that the X shape is asymmetric with respect to the mid-plane. In particular, the extent of the mid-plane asymmetry covers the entire region of the B/P bulge, starting just within the arms of the X shape to roughly twice the extent of the X shape,  $2 < |x|/\text{kpc} < 5$ . The mid-plane asymmetry maps thus clearly identify the extension and strength of the asymmetric regions, if present. The mid-plane asymmetry map of model D5 shows asymmetries reaching values of  $|A_\Sigma(x, z)| \sim 0.15$ . The maxima in  $|A_\Sigma(x, z)|$  are located just within the arms of the X shape.

To quantify the mid-plane asymmetry, we define a related diagnostic describing the ‘mid-plane asymmetry profile’,  $A_\Sigma(x)$ , by collapsing the vertical distribution within the region of the X shape:

$$A_\Sigma(x) = \sum_{z_{\min}}^{z_{\max}} A_\Sigma(x, z) \quad (2)$$

where the sum is calculated along the  $x$ -axis within the vertical interval  $z_{\min} < z < z_{\max}$ . The region near the mid-plane needs to be excluded (i.e.  $z_{\min} > 0$ ) because in real galaxies it often hosts dust and/or star-forming features, which produce spurious signatures not associated with mid-plane asymmetry produced by buckling. The upper limit,  $z_{\max}$ , covers the vertical extent of the X shape (along the  $z$ -axis), i.e. its semiminor axis. It is measured by analysing various profiles along the  $x$ -axis extracted at different vertical heights from the surface number density and unsharp images, along the region where the X shape traces a trapezoidal shape. We estimate





**Figure 2.** Map of the surface number density (top panel), its unsharp masked version (middle panel), and mid-plane asymmetry map (bottom panel) of models D5 (at 5 Gyr, left-hand column) and HG1 (at 10 Gyr, right-hand column) seen side-on. Some isocontours of the surface number density (white lines) and unsharp mask (red lines) maps are shown for both models. In all the plots, the bar major axis coincides with the  $x$ -axis.

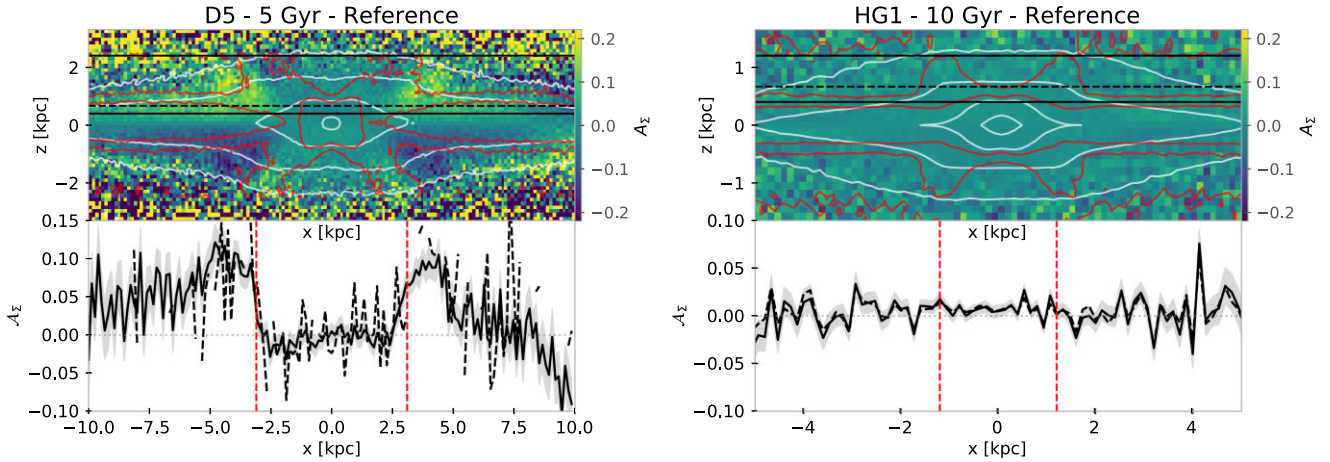
the uncertainties on the mid-plane asymmetry profile with a Monte Carlo simulation by generating 100 noisy mock side-on maps of the surface number density  $\Sigma(x, z)$ , assuming the galaxy centre is at  $(x, y, z) = (0, 0, 0)$ . We calculate the Poisson noise for each location  $(x, z)$  of the density map and build the mock maps by assuming the value of the density has a Gaussian distribution centred on the original value of  $\Sigma(x, z)$  and with standard deviation equal to the corresponding Poisson noise. We then generate 100 mid-plane asymmetry profiles from the mock maps and adopt the rms of the distribution of measured values at each location along the  $x$ -axis as the error for the profile. To estimate the semimajor axis of the X shape (along the  $x$ -axis), we extract various profiles of the surface number density and unsharp images along the  $x$ -axis at given values of  $z$  in the region of the B/P bulge. These profiles clearly look double-peaked. The semimajor axis of the X shape corresponds to the distance between the two peaks. The B/P bulge in model D5 has a semimajor axis (along the  $x$ -axis) of 3.1 kpc and a semiminor one (along the  $z$ -axis) of 2.4 kpc. The B/P bulge in model HG1 has a semimajor axis of 1.3 kpc and a semiminor one of 1.2 kpc.

Fig. 3 shows the mid-plane asymmetry diagnostics for models D5 (left-hand column) and HG1 (right-hand column). The two profiles in each model (solid and dashed black lines) are calculated in slightly different vertical regions, both including the vertical extension of the B/P bulge (these regions are highlighted by the horizontal lines in the top panels), but varying the extension of the excluded region near the mid-plane. In particular, we adopt the vertical ranges between  $0.4 < z < 2.4$  and  $0.7 < z < 2.4$  kpc for model D5 and  $0.4 < z < 1.1$  kpc and  $0.6 < z < 1.1$  kpc for model HG1, to calculate the mid-plane asymmetry radial profiles. The results of the different profiles are broadly in agreement: the extension of the excluded region near the mid-plane does not affect significantly the mid-plane asymmetry profile. We will refer to the profile traced with a solid black line as the reference one for subsequent comparisons. The mid-plane asymmetry profiles in model D5 exhibit two clear peaks, reaching  $\mathcal{A}_\Sigma(x) \sim 0.10 - 0.12$ . The profiles are flat with  $\mathcal{A}_\Sigma(x) \sim 0.0$  for  $|x| < 2.5$  kpc, increase steeply to peaks at  $|x| \sim 5.0$  kpc, and then decrease gently farther out, reaching  $\mathcal{A}_\Sigma(x) \sim 0.00 - 0.05$  at  $|x| \sim 7.5$  kpc. At  $|x| > 7.5$  kpc, further out in the disc, the profile remains slightly asymmetric when comparing the positive and negative  $x$

range. The mid-plane asymmetry profiles for model HG1 reveal no coherent mid-plane asymmetry. The mid-plane asymmetry profile remains flat, with  $\mathcal{A}_\Sigma(x) \lesssim 0.02$ .

## 2.2 Time evolution of the mid-plane asymmetry

In order to understand how long-lasting the mid-plane asymmetries are, we compute the asymmetry diagnostics at intervals of 1 Gyr to track their evolution in both models. Fig. 4 shows the evolution of the mid-plane asymmetry profiles for models D5 (left-hand column) and HG1 (right-hand column). The onset of a B/P bulge via buckling in model D5 is clearly visible in the strongly asymmetric shape of the profile, where two peaks symmetric with respect to the  $x$ -axis appear, at  $\sim 4$  Gyr. The mid-plane asymmetry persists for  $\sim 4$  Gyr after the buckling event, but decreases in strength and disappears at 9 Gyr: it reaches values as large as  $\mathcal{A}_\Sigma(x) \sim 0.2$  at  $\sim 4$  Gyr, decreases rapidly during the first 1 Gyr after the buckling event, reaching  $\mathcal{A}_\Sigma(x) \sim 0.10 - 0.15$ , and decreases further but slowly in the following 3 Gyr, reaching  $\mathcal{A}_\Sigma(x) \sim 0.05$  at 8 Gyr. Some asymmetry is visible in the outer part of the disc at 9 Gyr, not associated to the B/P bulge and possibly due to a weak warp in the disc. In Fig. A1, we show the time evolution of the mid-plane asymmetry with higher time resolution around the buckling event. In particular, we analyse the interval between 3.5 and 4.5 Gyr with an interval of 0.1 Gyr. The buckling lasts  $\sim 0.5$  Gyr and mid-plane asymmetry is visible within the region of the B/P bulge, and during the early phase of the instability. During the buckling event the inner part of the bar bends, which scatters stars, breaks the symmetric distribution of stars with respect to the mid-plane and causes a visible asymmetry to appear at the corner of the B/P region. This asymmetry slowly declines with time. The time-scale for this decline is a conservative lower limit due to the fact that the evolution of  $N$ -body simulations, used here, is known to be fast, because of the absence of gas (e.g. Erwin 2019). The rate at which resonance crossing within the bar occurs may be responsible for the lifetime of the asymmetry, but this requires a detailed orbital study to quantify (Beraldo e Silva et al., in preparation). On the other hand, no significant asymmetries are visible during the entire evolution of star-forming model HG1 (see Fig. 4, right-hand panel).



**Figure 3.** Left-hand column: mid-plane asymmetry map (upper panel) of model D5 (at 5 Gyr) with some isocontours of the surface number density (white lines) and its unsharp mask (red lines) maps. The horizontal lines mark the vertical extension of the regions adopted to extract the mid-plane asymmetry radial profiles shown in the lower panel. Mid-plane asymmetry radial profiles (lower panel) derived in the vertical ranges between  $0.4 < z < 2.4$  kpc (solid line with grey error bars) and  $0.7 < z < 2.4$  kpc (dashed line). The vertical red dashed lines mark the extension of the X shape along the  $x$ -axis. Right-hand column: same as in the left-hand column, but for model HG1 (at 10 Gyr) with  $0.4 < z < 1.1$  kpc (solid line, lower panel) and  $0.6 < z < 1.1$  kpc (dashed line, lower panel).

In Appendix A, we also present the time evolution of the pure  $N$ -body models D8 and T1 from Anderson et al. (2022). Model D8 suffers a weak buckling event, with  $A_{\text{buck}} \sim 0.04$ , similar to model D5. The mid-plane asymmetry visible 1 Gyr after buckling is similar to that in model D5; it decreases with time but remains visible for at least 5 Gyr after buckling (the simulation ends at 9 Gyr). This result means the mid-plane asymmetry remains visible for at least 1 Gyr longer than in model D5. On the other hand, model T1, which suffers the weakest buckling ( $A_{\text{buck}} \sim 0.02$ ), has a weaker mid-plane asymmetry that disappears already 1 Gyr after the instability. A weaker buckling event in model T1 thus produces a smaller mid-plane asymmetry, which does not persist as long.

### 3 OBSERVATIONAL CONSIDERATIONS

Having demonstrated long-lasting mid-plane asymmetries produced by buckling in some simulations, we now explore the prospects for detecting such asymmetries in real galaxies. In this section, we consider some of the observational effects that may complicate measurements of mid-plane asymmetries. We will conclude that these difficulties can be surmounted, but the selection of nearly edge-on galaxies is crucial.

#### 3.1 Effect of galaxy orientation and centre

We start by varying the parameters used to build the mid-plane asymmetry maps in the simulated data to test how they influence the mid-plane asymmetry diagnostics. In particular, we want to identify the observational conditions under which the mid-plane asymmetry due to a past buckling event is clearly identifiable. These tests are needed since real galaxies are unlikely to be observed perfectly edge-on ( $i = 90^\circ$ ) and with the bar oriented side-on (i.e. the bar aligned with the  $x$ -axis).

##### 3.1.1 Effect of the galaxy inclination

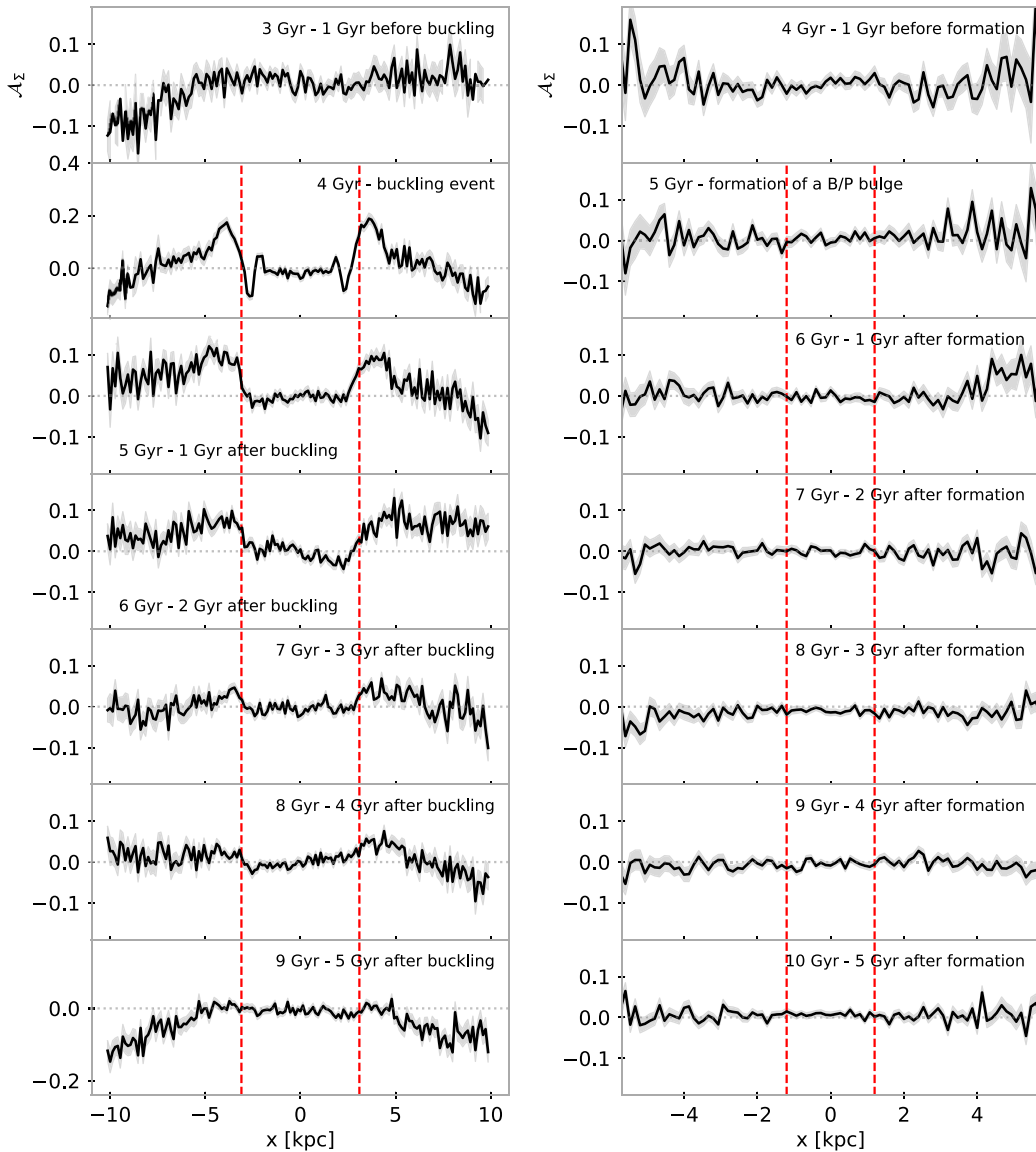
A galaxy is often considered edge-on when the disc inclination  $i > 85^\circ$ , while a nearly edge-on view refers to  $80^\circ < i < 85^\circ$  (e.g. Makarov & Antipova 2021). The probability of observing a galaxy within  $1^\circ$  of exactly edge-on is less than 2 per cent. Disc

inclination cannot be measured exactly from its photometry, unless its intrinsic thickness is well-known, while any dust extinction further complicates the determination of  $i$  (Padilla & Strauss 2008; Unterborn & Ryden 2008). We therefore explore what happens to the diagnostics when the model is not seen perfectly edge-on, assuming the inclination of the galaxy to vary between  $81^\circ < i < 99^\circ$ .

In Fig. 5, we present the resulting diagnostics for model D5, assuming  $i = 90^\circ \pm 3^\circ$ ,  $\pm 6^\circ$ , and  $\pm 9^\circ$ . The B/P bulge's extent is  $3.1 \times 2.4$  kpc. While a mid-plane asymmetry is still visible, it decreases in strength as the inclination deviates from  $90^\circ$ . Nevertheless, the characteristic double-peaked shape of the mid-plane asymmetry profiles remains easily identifiable. Deviation from a perfectly edge-on view produces a non-zero contribution to the flat part of the mid-plane asymmetry profile, i.e. within the region of the X shape, which starts to be clearly visible for  $|90^\circ - i| > 6^\circ$ . There is also a slight asymmetry with respect to the  $z$ -axis: for  $i > 90^\circ$  the stronger peak is on the right-hand side, while for  $i < 90^\circ$  it is on the left.

In Fig. 6, we present a similar analysis for model HG1. The B/P bulge's extent is now  $1.3 \times 1.2$  kpc. A very weak mid-plane asymmetry appears in model HG1 for  $i = 90^\circ \pm 3^\circ$ , reaching  $|A_z(x)| \sim 0.02 - 0.04$ . This is 10 – 20 per cent of the corresponding values found for model D5. Moreover, a stronger deviation from  $A_z(x) = 0$  in the region of the X shape is visible at all the inclinations compared with model D5. For  $i = 90^\circ \pm 6^\circ$  and  $90^\circ \pm 9^\circ$ , an asymmetry persists in the region of the disc at  $x > 2$  kpc as well: this asymmetry does not present the double-peaked shape expected for the mid-plane asymmetry produced by the buckling event and extends further out in the disc than the X shape (which extends only up to  $x < 1.2$  kpc), so it is reasonable to assume that it is not associated with the X shape. Larger departures from  $i = 90^\circ$  produce larger mid-plane asymmetries all along the disc. The disc region outside the bar in model HG1 is not axisymmetric but contains spirals, as seen in the face-on view of Fig. 1. These spirals produce the observed features in this region of the mid-plane asymmetry map when the model is seen at small deviations from perfectly edge-on.

Although a mid-plane asymmetry produced by a past buckling event is easily revealed by our diagnostics in perfectly edge-on galaxies, it is still recognizable up to at least  $9^\circ$  away from a perfectly edge-on view, based on the double-peaked shape of the mid-plane asymmetry profile. Nevertheless, asymmetries not associated



**Figure 4.** Time evolution of the mid-plane asymmetry radial profile of models D5 (left-hand column) and HG1 (right-hand column) over six Gyrs bracketing the formation of the B/P bulge. The vertical red dashed lines mark the extension of the X shape along the  $x$ -axis.

with buckling may also arise from deviations from edge-on views larger than  $\pm 3^\circ$ . These results imply that mid-plane asymmetries can be safely identified for images that are within  $3^\circ$  of the edge-on orientation for realistic galaxies.

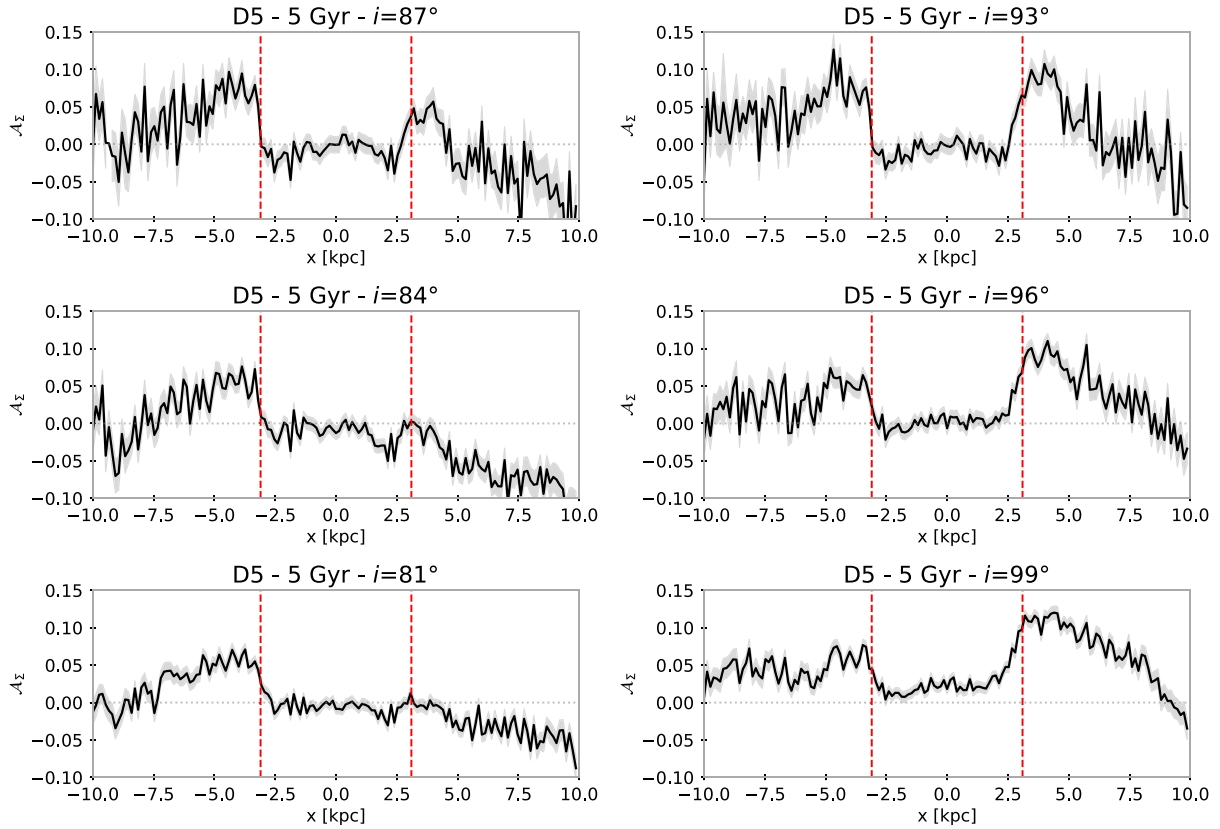
### 3.1.2 Effect of the bar orientation

The orientation of the bar in real galaxies will also be randomly distributed between side-on (i.e. the bar is aligned with the  $x$ -axis) and end-on (i.e. the bar is perpendicular to the  $x$ -axis). In the first case, the associated B/P bulge, if present, has the expected X shape, while in the second case, it usually appears boxy (e.g. Combes & Sanders 1981; Bureau & Freeman 1999; Lütticke et al. 2000; Chung & Bureau 2004; Laurikainen & Salo 2016). To explore the effects of the bar's orientation on the mid-plane asymmetry, we now explore the effect of  $\text{PA}_{\text{bar}} = 30^\circ, 60^\circ$ , and  $90^\circ$ , where  $\text{PA}_{\text{bar}}$  is measured rotating the bar in the  $(x, y)$  plane and around the  $z$ -axis, where  $\text{PA}_{\text{bar}} = 0^\circ$  means

the bar is aligned to the  $x$ -axis in the edge-on view. The resulting asymmetry diagnostics for models D5 (left-hand column) and HG1 (right-hand column) are presented in Fig. 7. The apparent dimension of the B/P bulge along the  $x$ -axis progressively decreases for  $\text{PA}_{\text{bar}} = 30^\circ, 60^\circ$ , and  $90^\circ$ : it becomes 3.1, 2.2, and 1.8 kpc for model D5 and 1.2, 0.9, and 0.7 kpc for model HG1.

In model D5, when  $\text{PA}_{\text{bar}} = 30^\circ$  the mid-plane asymmetry looks similar to the reference case from Fig. 3. When  $\text{PA}_{\text{bar}} = 60^\circ$  both the X shape traced by the red contours and the asymmetries appear weaker. The flat part of the mid-plane asymmetry profile around  $x = 0$  disappears, while the profile increases less steeply to the two peaks, when compared to the side-on case of Fig. 3. Moreover, the extension along the  $x$ -axis of the X shape decreases and the same behaviour is adopted by the asymmetric regions. At  $\text{PA}_{\text{bar}} = 90^\circ$ , the X shape is rather weak but still distinguishable as a boxy structure. The asymmetries are weak (reaching  $\mathcal{A}_z(x) \sim 0.05 - 0.07$ , half the values in Fig. 3), but the profile continues to show the typical double-peaked shape.





**Figure 5.** Mid-plane asymmetry profiles as in Fig. 3 lower panel, but for model the D5 (at 5 Gyr) with different inclinations with respect to the side-on view ( $\Delta i \pm 3^\circ$ , top row;  $\Delta i \pm 6^\circ$ , middle row;  $\Delta i \pm 9^\circ$ , bottom row).

No asymmetries appear for model HG1 at any  $\text{PA}_{\text{bar}}$  (Fig. 7, right). An X-shaped structure is clearly visible when  $\text{PA}_{\text{bar}} = 30^\circ$  and  $60^\circ$ , and it becomes boxy at  $\text{PA}_{\text{bar}} = 90^\circ$ .

### 3.1.3 Effect of the disc position angle

The identification of the correct disc PA is crucial for detecting a mid-plane asymmetry because it defines the mid-plane relative to which the diagnostics are measured. The disc PA in real galaxies is usually determined by fitting ellipses to the isophotes of the outer disc (see e.g. Aguerri et al. 2015). The typical resulting uncertainties on the disc PA for nearly edge-on galaxies are lower than  $1^\circ$  (Salo et al. 2015). Nevertheless, outer disc distortions such as warps, thick discs, or asymmetric features in the disc (such as dust along the mid-plane and bright foreground stars) may increase the uncertainty on the PA of the disc. Therefore, next, we test the effect on the mid-plane asymmetry diagnostics of errors on the disc PA, by assuming that the disc is not perfectly aligned with the  $x$ -axis.

Fig. 8 presents the mid-plane asymmetry diagnostics assuming a  $\text{PA}_{\text{disc}} = +1^\circ$  (upper panels) and  $-1^\circ$  (bottom panels) for models D5 (left-hand column) and HG1 (right-hand column). As might be expected, the effect is dramatic for both models: a strong quadrupolar signal appears in the disc region in the mid-plane asymmetry maps while the mid-plane asymmetry profiles are sloped along the entire radial range, especially in the region of the disc. The slope of the mid-plane asymmetry profiles changes sign when varying the disc PA in opposite directions ( $\pm 1^\circ$ ), while the quadrupolar signal changes its orientation with respect to the mid-plane.

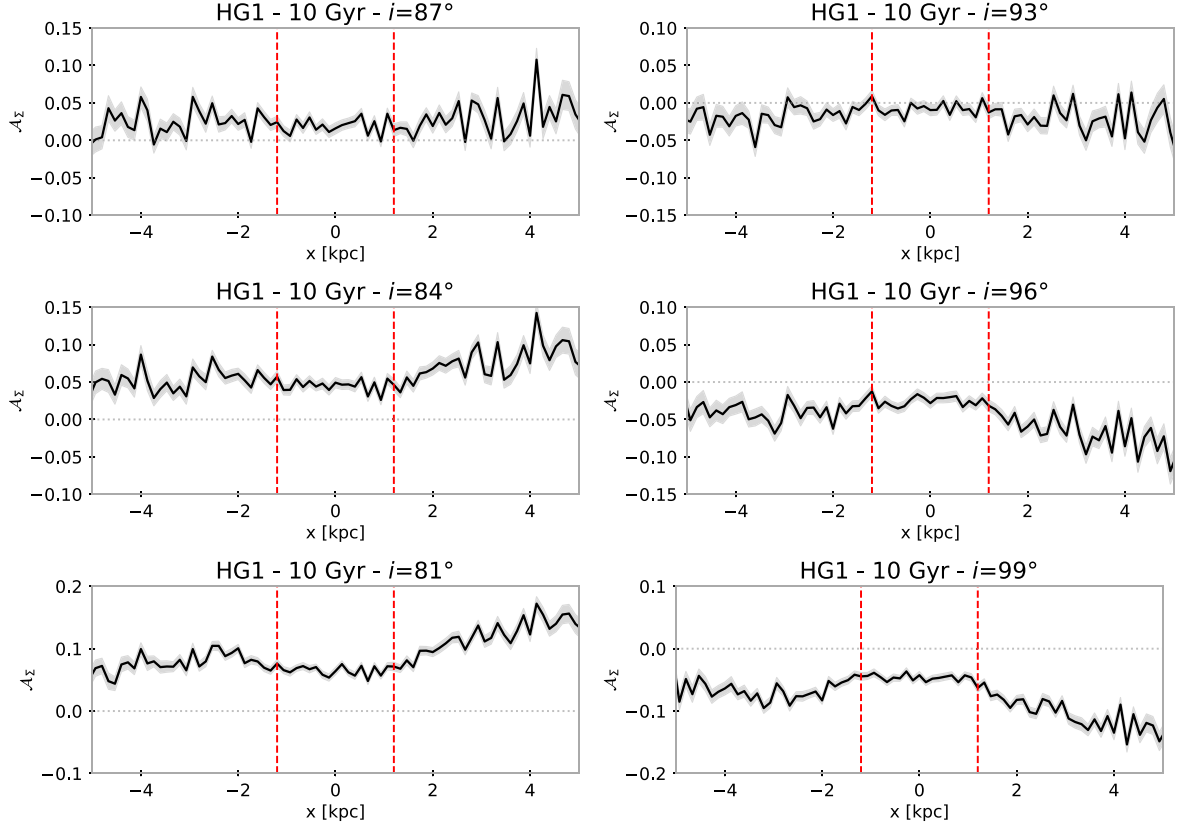
The peaks in the mid-plane asymmetry profile of model D5 are altered by the incorrect disc PA, with both of them flattened and broadened to different extents. The mid-plane asymmetry profile of model HG1 behaves similarly but lacks the bumps corresponding to the two peaks. Despite both the mid-plane asymmetry map and mid-plane asymmetry profile being strongly affected by the wrong PA, the presence of the bumps/peaks in model D5 helps distinguish between mid-plane asymmetry and mid-plane symmetry. We conclude that, in spite of the large artificial asymmetries produced by a misaligned disc, the shape of the mid-plane asymmetry profile can still be used to identify mid-plane asymmetry produced by buckling.

We also test the effect of a wrong disc orientation (disc  $\text{PA} \pm 1^\circ$ ), together with an imperfectly edge-on view ( $i = \pm 3^\circ$ ). For each model, the dominant effect is that produced by the wrong disc PA. A strong quadrupolar signal appears in the disc region, and the mid-plane asymmetry profile is sloped along its entire extent. Asymmetries associated with the B/P bulge are now harder to distinguish in model D5, since only a weak bump appears on the steep mid-plane asymmetry profile.

### 3.1.4 Identification of the disc position angle

Therefore, correcting for small tilts is preferable to merely using the mid-plane asymmetry profile with a tilt in place. To identify the disc PA, we develop a simple algorithm which we test on simulations. We consider the edge-on view of the surface density of the models. We select two areas in the  $(x, z)$  plane, covering the extension of the X shape along the  $x$ -axis and symmetric with respect to the galaxy centre and integrate the flux along the  $x$ -axis to obtain the collapsed





**Figure 6.** Mid-plane asymmetry profiles as in Fig. 3 lower panel, but for model HG1 (at 10 Gyr) with different inclinations with respect to the side-on view ( $\Delta i \pm 3^\circ$ , top row;  $\Delta i \pm 6^\circ$ , middle row;  $\Delta i \pm 9^\circ$ , bottom row).

profiles of the density. These profiles are peaked around the galaxy centre and decrease along the  $z$ -axis. We then vary the disc PA and run this test until the two profiles have minimal difference along their extent. We consider as the best value of the disc PA for which the two profiles are identical. The two profiles do not coincide, and the peaks produced by the central region of the galaxy do not line up, if the disc is not aligned with the  $x$ -axis. We vary the assumed disc PA by  $0.2^\circ$  within  $\pm 2^\circ$  from the reference value to identify the disc PA. Once we identify the best disc PA, we vary the extension of the two symmetric portions of the surface density plot, to test that the profiles remain superimposed.

Fig. 9 shows an example of the application of this method to identify the disc PA of model D5, with a wrong (upper panel), and the well-identified disc PA (lower panel). The profiles plotted on the sides of the image are obtained by collapsing the two portions of the image within the three vertical black lines. The portions shown here are for  $|x| < 4$  kpc, but we have varied these regions. The method correctly determines the disc orientation; in subsequent sections of this paper, we adopt this method for our observational sample of galaxies, and conservatively reject galaxies for which the method does not work, i.e. when the PA is not constant when varying the regions along the  $x$ -axis.

### 3.1.5 Effect of a misidentified centre

The correct determination of the centre of the galaxy is also crucial for defining the mid-plane. We therefore test the effect of a miscentring on the mid-plane asymmetry diagnostics by varying the centre used

to build the mid-plane asymmetry map, along the  $x$ - and  $y$ -axes by 1 pixel (corresponding to 0.13 kpc in both models) simultaneously,  $(\Delta x, \Delta y) = (1, 1)$  pixel.

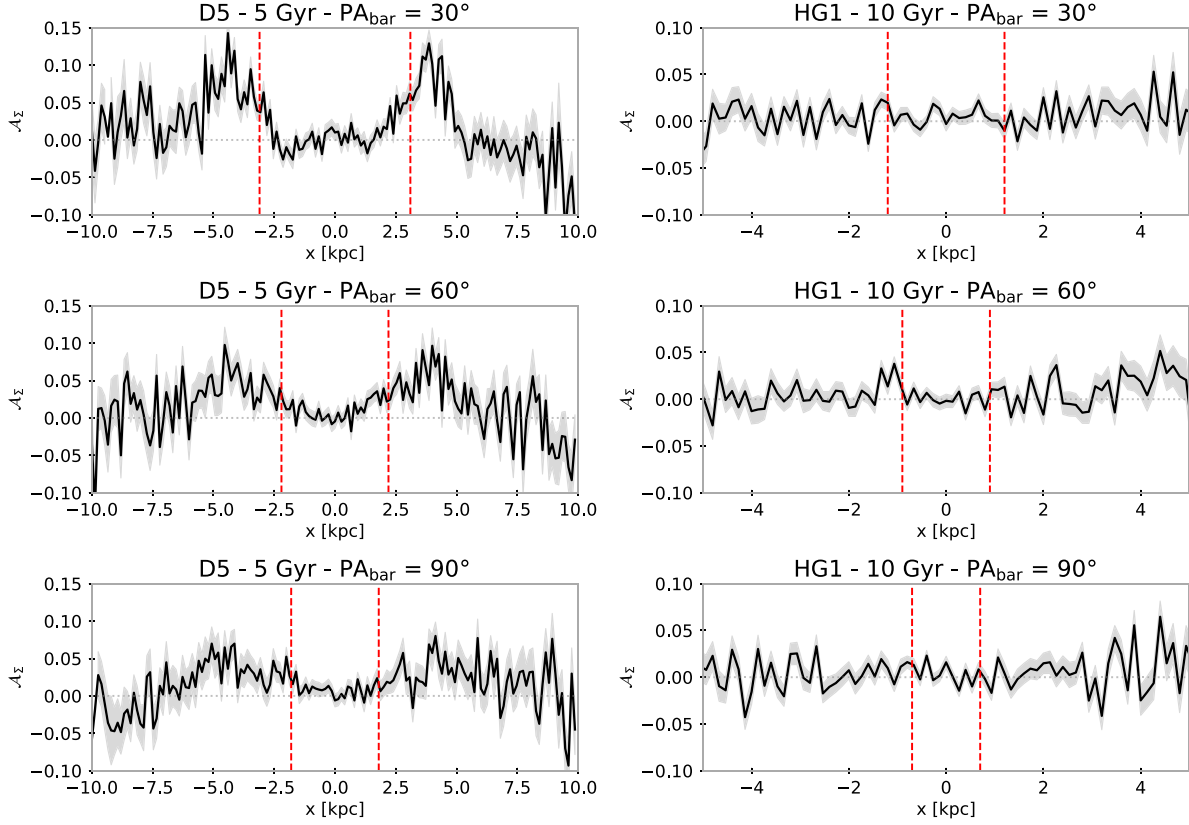
Fig. 10 shows the mid-plane asymmetry maps and mid-plane asymmetry profiles assuming a miscentring by  $(\Delta x, \Delta y) = (1, 1)$  pixel for models D5 (left-hand column) and HG1 (right-hand column). In both models, a strong but artificial signal appears in the central region of the mid-plane asymmetry map with a characteristic dipolar shape extending to  $\sim 10$  pixels ( $\sim 1.5$  kpc). Strong artificial asymmetries are visible also in the disc region, while the mid-plane asymmetry profiles are non-zero everywhere, with a strong peak near the centre. The same result is found when the mid-plane asymmetry map is miscentred along just the  $y$ -axis, assuming  $(\Delta x, \Delta y) = (0, 1)$  pixel, while no dipolar signal is present when the mid-plane asymmetry map is miscentred along the  $x$ -axis, assuming  $(\Delta x, \Delta y) = (1, 0)$  pixel.

In order to identify the best centre for observed galaxies, we develop another simple algorithm. We perform a Fourier analysis on the central regions of the mid-plane asymmetry map, by expanding its azimuthal radial profile,  $I(r < R_{\max}, \phi)$ , as:

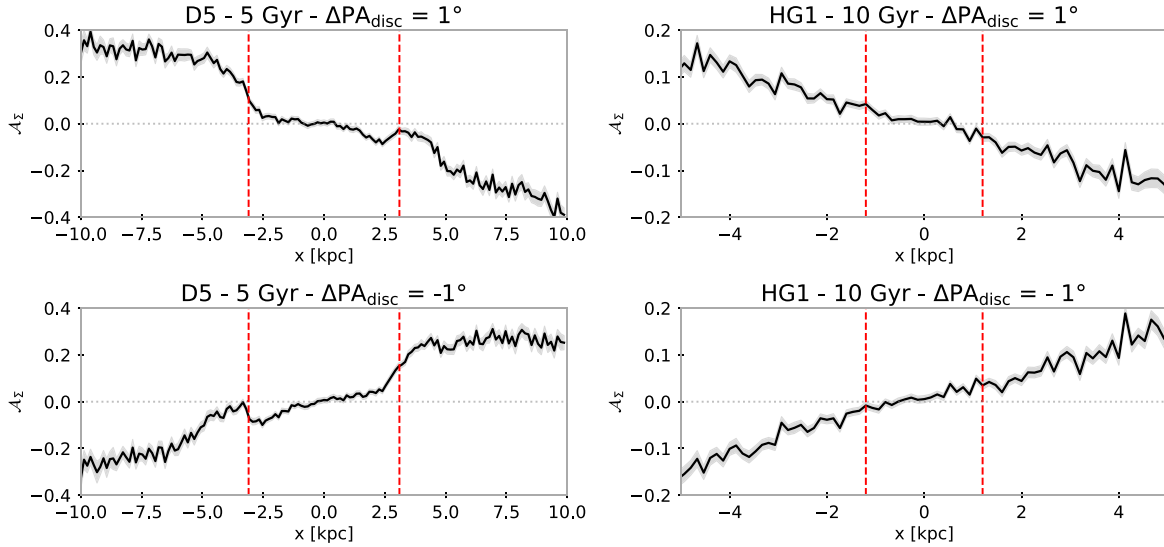
$$I(r < R_{\max}, \phi) = \sum_{m=-\infty}^{\infty} [c_m e^{im\phi}]. \quad (3)$$

The corresponding Fourier components are given by:

$$c_m = \frac{1}{2\pi} \int_{-\pi}^{\pi} I(r < R_{\max}, \phi) e^{-im\phi} d\phi \quad (4)$$



**Figure 7.** Mid-plane asymmetry profiles as in Fig. 3 lower panel, but for models D5 (at 5 Gyr, left-hand column) and HG1 (at 10 Gyr, right-hand column) with different bar orientations in the edge-on view ( $PA_{\text{bar}} = 30^\circ$ , top row;  $PA_{\text{bar}} = 60^\circ$ , middle row;  $PA_{\text{bar}} = 90^\circ$ , bottom row).

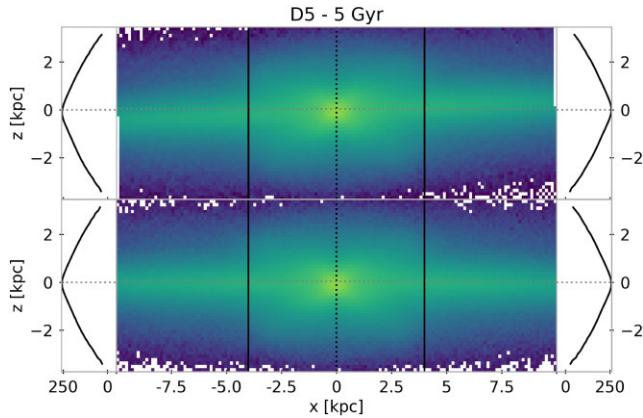


**Figure 8.** Mid-plane asymmetry profiles as in Fig. 3 lower panel, but for models D5 (at 5 Gyr, left-hand column) and HG1 (at 10 Gyr, right-hand column) with different misalignments of the disc major axis with respect to  $x$ -axis ( $\Delta PA_{\text{disc}} = +1^\circ$ , top row;  $\Delta PA_{\text{disc}} = -1^\circ$ , bottom row).

with the Fourier amplitude of the  $m$ -th component given by  $I_m = |c_m|$ .

A large value of the  $m = 1$  component represents a feature with dipolar asymmetry, which corresponds to the artificial signal due to miscentring that we want to minimize. We proceed as follows: we build a set of mid-plane asymmetry maps by varying the centre by

0.5 pixels around the correct value by 5 pixels along both  $x$ - and  $y$ -axes. We measure the  $m = 1$  component within the central part of the image, out to  $R_{\text{max}} \sim 20$  pixels, covering the extension of the dipolar structure. The  $m = 1$  component is minimized at the true centre. We repeat this analysis varying  $R_{\text{max}}$  between 50 per cent and 125 per cent of the extension of the dipolar structure to check that



**Figure 9.** Maps of the surface number density of model D5 (at 5 Gyr) seen side-on with the disc major axis misaligned by  $\Delta\text{PA} = -2^\circ$  (upper panel) and aligned (lower panel) with respect to the  $x$ -axis. The vertical lines define the two symmetric radial regions ( $|x| > 4$  kpc) where we obtained the vertical profiles of mean surface number density plotted on both sides of the panels.

the resulting centre truly minimizes the  $m = 1$  component. We apply this method to find the centres of all the galaxies in our observational sample.

### 3.2 Further observational effects

#### 3.2.1 Effect of image rotation

In order to build the mid-plane asymmetry map, we need to align the edge-on galaxy with the  $x$ -axis. While it is trivial in simulations to rotate the system to the  $x$ -axis before constructing the image, images of real galaxies are obtained with the galaxies at random orientations on a CCD, and need to be rotated in order to align the disc PA to the  $x$ -axis. To perform the rotation, we use the IDL procedure ROT, which involves an interpolation method based on a cubic convolution (Park & Schowengerdt 1983).

To test whether this rotation procedure produces any artefacts in the mid-plane asymmetry maps, we build the edge-on view for our models with the disc PA randomly oriented. We then rotate this image using the same ROT procedure to the required orientation and build the corresponding asymmetry diagnostics. After comparing these with the diagnostics presented in Fig. 3, we have verified that they are the same (see Fig. A2). We also calculate the normalized difference between the original edge-on view of the models and those produced through a rotation of a misaligned image, and find that the differences due to image rotation are less than 1 per cent.

#### 3.2.2 Effect of the spatial sampling

Second, we explore the effect of the spatial sampling on the asymmetry diagnostics. We both halve and double the spatial sampling, assuming a pixel scale of 0.07 and 0.25 kpc, respectively. We find no noteworthy effects when varying the spatial sampling within reasonable values: in all cases, model D5 presents strong asymmetries similar to those observed in Fig. 3, while no asymmetries appear for model HG1 (see Fig. A2).

#### 3.2.3 Effect of seeing

When comparing the results of simulations to observational studies, it is necessary to take into account the effects of seeing (instru-

mental and/or atmospheric). To mimic the observational conditions presented in the following sections, we rescale the images of the projected number density of the particles of the models to a distance up to  $\sim 50$  Mpc. Then, we convolve the images with a Gaussian filter using the PYTHON-SCIPY function GAUSSIAN\_FILTER with a varying full-width at half maximum (FWHM). At a FWHM of 0.5 kpc, a slight smoothing of the mid-plane asymmetry profile is detectable (upper panel of Fig. A4). With increasing FWHM, the width of the asymmetry rises while the peak declines, as expected. At FWHM  $\sim 3.0$  kpc, the double-peaked shape of the mid-plane asymmetry profile has been smoothed to such an extent that it becomes barely distinguishable and appears consistent with a flat profile (see bottom row of Fig. A4). This limiting value corresponds to almost one-third of the radial separation between the peaks observed along the mid-plane asymmetry profile just outside the region of the B/P bulge in model D5 (compare e.g. Fig. 2 with A4, bottom row). In turn, this limiting seeing corresponds to a FWHM of 12.2 arcsec, for galaxies at a distance of  $\sim 50$  Mpc. This radial distance corresponds to half of the extension of the smallest observed B/P bulge analysed in this work.

#### 3.2.4 Effect of dust

The mid-plane of star-forming galaxies is generally dusty. In barred galaxies, within the bar, dust gets swept into dust lanes along the leading edges of the bar (see e.g. Athanassoula 1992; Smith et al. 2016). Dust attenuates the stellar light along the LOS, particularly at short wavelengths. We explore the effect of dust on the mid-plane asymmetry diagnostics by modelling an extended dust disc together with dust lanes along the bar in our models. We compute the resulting extinction along the LOS and the consequent mid-plane asymmetry diagnostics.

We assume the dust disc has a double-exponential profile in cylindrical coordinates (Wainscoat, Freeman & Hyland 1989):

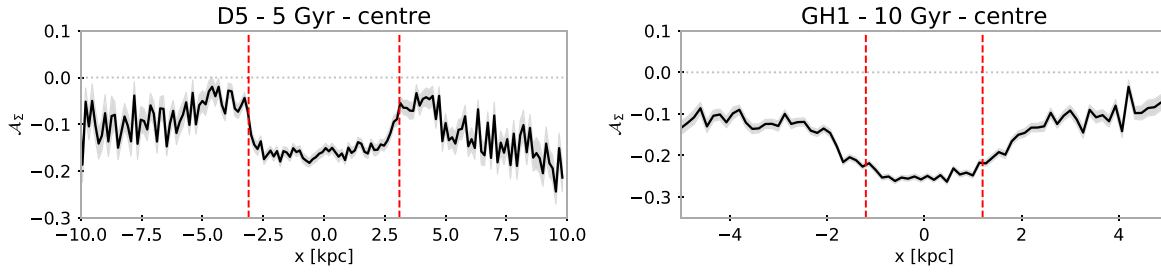
$$D_{\text{disc}}(R, z) = D_{0,\text{disc}} e^{-R/h_{R,\text{disc}}} e^{-|z|/h_{z,\text{disc}}}, \quad (5)$$

where  $h_{R,\text{disc}}$  and  $h_{z,\text{disc}}$  are the radial and the vertical scalelengths of the dust disc, respectively, while  $D_{0,\text{disc}}$  is the central dust density.

To mimic the bar dust lanes, we define rectangular areas on the bar's leading edges, mimicking the straight dust lanes of Athanassoula (1992). We assume a given width,  $w_{\text{dl}}$ , an angle between the dust lane and the bar major axis,  $s_{\text{dl}}$ , and the minimum and maximum extent of the dust lane,  $x_{\text{dl,min}}$  and  $x_{\text{dl,max}}$ , respectively, along the  $x$ -axis, where the bar is located. In particular, we assume  $x_{\text{dl,max}}$  to reach the extension of the bar, while  $x_{\text{dl,min}}$  is negative, given the observation that dust lanes can extend past the centre of the bar and wind around the bulge. Within the dust lanes, we assume that the dust distribution is described by the double-exponential model from equation (5), and zero outside, as in Gersten & Debattista (2007). In Fig. A5, we show the maps of the stellar surface number density of models D5 and HG1, superimposing the contours of the dust lanes.

To build the mid-plane asymmetry map taking into account dust extinction, we start from the projected surface number density of the particles at each position of the image of the (nearly) edge-on view of the models. When a particle is obscured by dust, it contributes with a lower weight to the projected surface number density, which depends on the amount of intervening dust located along the LOS between the observer and the given particle. For each particle, we integrate the projected dust distribution along the LOS between the observer and the particle. Assuming a unit mass absorption coefficient, this corresponds to the optical depth  $\tau_i$ . The corresponding particle weight is then  $w_i = e^{-\tau_i}$ .





**Figure 10.** Mid-plane asymmetry profiles as in Fig. 3 lower panel, but for models D5 (at 5 Gyr, left-hand column) and HG1 (at 10 Gyr, right-hand column) with a miscentring of  $(\Delta x, \Delta y) = (1, 1)$  pixel, (where 1 pixel corresponds to 0.13 kpc in both models).

We adopt the highest typical observed value for the central extinction  $A_V \sim 5.0$  mag (Holwerda et al. 2005), which corresponds to the face-on optical depth for a particle infinitely far behind the disc,  $\tau_0 = 0.921 A_V$ . We assume a thin dust disc, which radially extends beyond the bar ( $h_{R, \text{disc}} = 1$  kpc and  $h_{z, \text{disc}} = 0.1$  kpc), after checking a more extended disc (up to  $1.5 \times$  the initial galaxy disc scalelength) does not change substantially our conclusions.

We build the mid-plane asymmetry diagnostics using the extinguished map of the surface number density (after assuming a mass-to-light ratio equal to one). The dust produces an asymmetry with respect to the mid-plane in both models when they are observed not perfectly edge-on. In Fig. 11, we show the mid-plane asymmetry profiles for models D5 and HG1 with  $i = 90^\circ \pm 9^\circ$ ; a strong asymmetry, with a single peak centred at  $x = 0$ , is evident, while the double-peaked asymmetry profile of D5 is lost.

In Figs A6 and A7 (top panels), we show the effect of the dust for varying inclination in the range  $84^\circ < i < 96^\circ$ . The shape of the asymmetry produced by the dust is now clearly distinguishable from the asymmetry due to buckling since it peaks on the minor axis. The double peaks in the asymmetry profile due to buckling is preserved in model D5, but asymmetry appears near the minor axis as well for  $\Delta i \geq 3^\circ$ . We also note that, in model HG1, the dust does not produce the characteristic double-peaked mid-plane asymmetry profile arising from an intrinsic buckling asymmetry. In Figs A6 and A7 (bottom rows), we show as well the effect of a radially more extended dust disc (with  $h_{R, \text{disc}} = 1.5 \times$  the initial galaxy disc scalelength) for  $i = 90^\circ$ . No appreciable effects of the dust are observable. Of course, the vertical (horizontal) extension of the central asymmetry arising from the dust is related to the scaleheight (scalelength) of the dust disc,  $h_{z, \text{disc}}$  ( $h_{R, \text{disc}}$ ), with larger  $h_{z, \text{disc}}$  ( $h_{R, \text{disc}}$ ) producing an asymmetry extending to larger distances along the  $z$  ( $R$ ) axis in particular for deviation from the edge-on view. Since the central dust asymmetry decreases away from the mid-plane, it is possible to adjust the vertical extent within which the mid-plane asymmetry profile is computed to exclude the region most affected by the dust. Since the asymmetry that appears in the intrinsically symmetric model HG1 in the presence of dust does not present the double-peaked shape associated with a recent buckling event, we conclude that the effect of a smooth distribution of dust is distinct from that of a buckling-induced asymmetry.

### 3.3 Summary of the simulation results

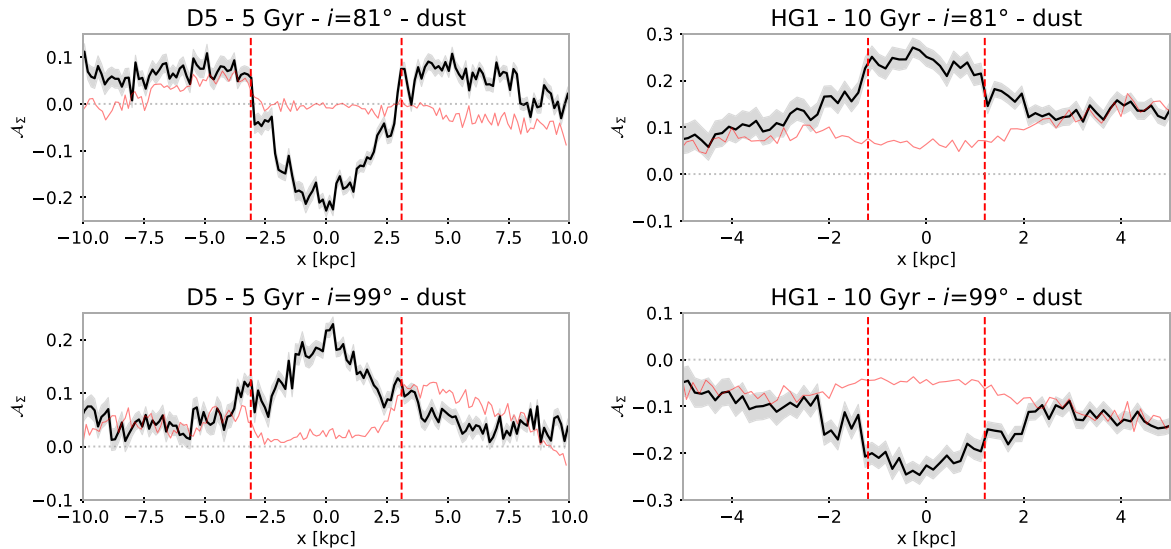
Using simulations, we have shown that buckling produces long-lasting mid-plane asymmetries. In as much as bars in pure  $N$ -body simulations such as D5 generally evolve rapidly, for instance becoming too large (Erwin 2019), it is likely that we underestimate the duration of the asymmetry. We have shown that the mid-plane

asymmetry is not very sensitive to small deviations ( $\sim 3^\circ$ ) from a perfectly edge-on orientation, but it becomes difficult to interpret at larger deviations. Mid-plane asymmetries are present for all bar position angles from side-on to end-on, even though the characteristic X shape is not clearly visible if the bar is end-on. Small errors in identifying the disc position angle produce very large asymmetries but these have a different distribution than those due to strong buckling and can be recognized readily by the strong quadrupolar signal in the mid-plane asymmetry map, and by the steep mid-plane asymmetry along the disc extent. Likewise, an error in identifying the correct centre is apparent in the large dipole in the mid-plane asymmetry map produced by vertical offsets, whereas small offsets in the horizontal direction do not change the mid-plane asymmetry diagnostics much. The rotation of an image using the IDL procedure ROT does not introduce significant variation in the measured mid-plane asymmetry. Moreover, reasonable variations in the image resolution also do not significantly alter the measured asymmetry. Lastly, the effect of a diffuse dust disc and dust lanes associated with the bar can produce an asymmetry with respect to the mid-plane with a single peak centred near the galaxy centre, which is very different from the asymmetry due to the buckling and which can be easily avoided by adjusting the region along the  $z$ -axis within which the mid-plane asymmetry profile is computed. We conclude that the mid-plane asymmetry map and profile are viable ways to test for past buckling events in real B/P galaxies, but it is crucial to select edge-on galaxies.

## 4 A SAMPLE OF EDGE-ON B/P GALAXIES IN S<sup>4</sup>G

Having demonstrated that asymmetry about the mid-plane is produced by strong buckling but not by weak buckling or resonant trapping, and that this asymmetry is long-lasting and can be detected, we present a pilot project to explore whether in practice the detection of mid-plane asymmetry is feasible in real galaxies. We apply our diagnostics to a sample of nearby, nearly edge-on galaxies from S<sup>4</sup>G (Sheth et al. 2010; Muñoz-Mateos et al. 2013; Querejeta et al. 2015).

S<sup>4</sup>G is a volume-, magnitude-, and size-limited survey of  $\sim 2800$  galaxies spanning a wide range in Hubble type, mass, colour, size, and disc inclination performed using the Infrared Array Camera (IRAC) at 3.6 and 4.5  $\mu\text{m}$  mounted on the *Spitzer* space telescope. The galaxies have distances  $D < 40$  Mpc (for  $H_0 = 75 \text{ km s}^{-1} \text{ Mpc}^{-1}$ ), blue light isophotal diameters  $D_{25} > 1.0$  arcmin, blue photographic magnitudes  $m_B < 15.5$  mag (corrected for internal extinction), and Galactic latitudes  $b > 30^\circ$ . The main goal of the survey is to unveil the assembly history and evolution of galaxies (Sheth et al. 2010). The wavelengths used to record the images are reasonably free of dust emission; this allows clear identification of morphological features of the old stellar populations.



**Figure 11.** Mid-plane asymmetry profiles, as in Fig. 3 lower panel, with a different inclination of  $\Delta i = \pm 9^\circ$  with respect to the side-on view and taking into account the effect of dust. Superimposed in red are showing the corresponding profiles obtained without taking into account the effect of the dust.

S<sup>4</sup>G images have a pixel scale of 0.75 arcsec, and angular resolution with a FWHM = 2.1 arcsec. They are processed through a uniform pipeline, and a variety of analyses are already publicly available (e.g. Querejeta et al. 2015; Salo et al. 2015). We download the images from Pipeline 4 (Salo et al. 2015), which includes a careful sky subtraction, from the NASA/IPAC Infrared Science Archive.<sup>1</sup>

#### 4.1 Sample selection

Buta et al. (2015) performed a morphological analysis of the S<sup>4</sup>G galaxies, adopting a modified version of the de Vaucouleurs (1959) revised Hubble–Sandage system (Buta, Corwin & Odewahn 2007), to identify and describe features such as lenses, inner and outer rings, as well as pseudo-rings, X-shaped structures, and B/P bulges. They identified 60 nearly edge-on galaxies hosting an X shape. Among these, we select galaxies that appear almost edge-on based on visual inspection, where dust does not obscure large portions of the X shape and that do not present extreme asymmetric features in the disc. This results in a parent sample of eight objects, listed in Table 1, for which optical images, obtained with different instruments/surveys (Digitized Sky Survey – DSS, *Hubble Space Telescope* – HST, WIYN telescope), are available from NASA/IPAC Extragalactic Database (NED<sup>2</sup>) and are shown in Fig. 12. A visual inspection of the optical images of the sample reveals that the selected galaxies are almost edge-on (the disc inclination is difficult to derive from the available images). They often host dust bands along the disc, which may help to visually identify the disc inclination and position angle. Extended dust lanes are visible along the disc of NGC 3628, NGC 4013, NGC 4235, and NGC 5170, while dust lanes are visible in the central part of the disc of NGC 4710. The dust lanes are well-aligned with the disc major axis in the galaxy NGC 4013, whereas for the remaining objects they are not aligned, or are warped, which may indicate that the host galaxy is not seen perfectly edge-on. Moreover, the discs are not perfectly symmetric, but the B/P bulge

(and/or a boxy structure) in the central portion of the galaxies is clearly recognizable. In particular, the outer discs of ESO 443-042, NGC 5073, and NGC 5529 are slightly warped, while the disc of NGC 3628 remains thick in its outer part.

We start the mid-plane asymmetry analysis of the S<sup>4</sup>G images using the calibrated and sky-subtracted 3.6  $\mu$ m images. Querejeta et al. (2015) obtained stellar mass maps for all our galaxies except NGC 5170 by separating the dominant light produced by the old stars and the dust emission using 3.6  $\mu$ m images, and measuring [3.6]–[4.5]  $\mu$ m colours. We also download these stellar mass maps from the NASA/IPAC Infrared Science Archive.

We perform an unsharp mask analysis on the images by convolving them with a circular Gaussian varying the FWHM manually, to highlight their X shape. We construct the unsharp masked images by subtracting the convolved images from the originals, as we did for the simulations. We quantify the extension of the X-shaped structure in each case, i.e. its semimajor and semiminor axes, analysing both the rotated images and unsharp masked ones, as done in Section 2.1. We apply our mid-plane asymmetry diagnostics to the rotated images.

In Fig. 13, we present our analysis of the sample: for each galaxy, we show the original S<sup>4</sup>G calibrated and sky-subtracted 3.6  $\mu$ m image (top row), the unsharp mask map (middle row), and the mid-plane asymmetry map (bottom row). The images are rotated to have the disc PA aligned with the  $x$ -axis and cut, in order to be centred on the galaxy centres. A similar unsharp mask analysis on our sample has already been performed by Laurikainen & Salo (2017), who provided an estimate of the extension of the X-shaped structure in each case, i.e. its semimajor and semiminor axes. Our results from the unsharp mask analysis are qualitatively in agreement with Laurikainen & Salo (2017), when comparing the extension of the B/P bulges in Fig. 13 and reported in Table 1 and the semimajor and semiminor axes of the X-shaped features from Laurikainen & Salo (2017).

#### 4.2 Galaxy parameters

As discussed in Section 3.1, the right identification of the galaxy centre and disc PA is necessary to build an effective mid-plane asymmetry map. Salo et al. (2015) provided the galaxy parameters

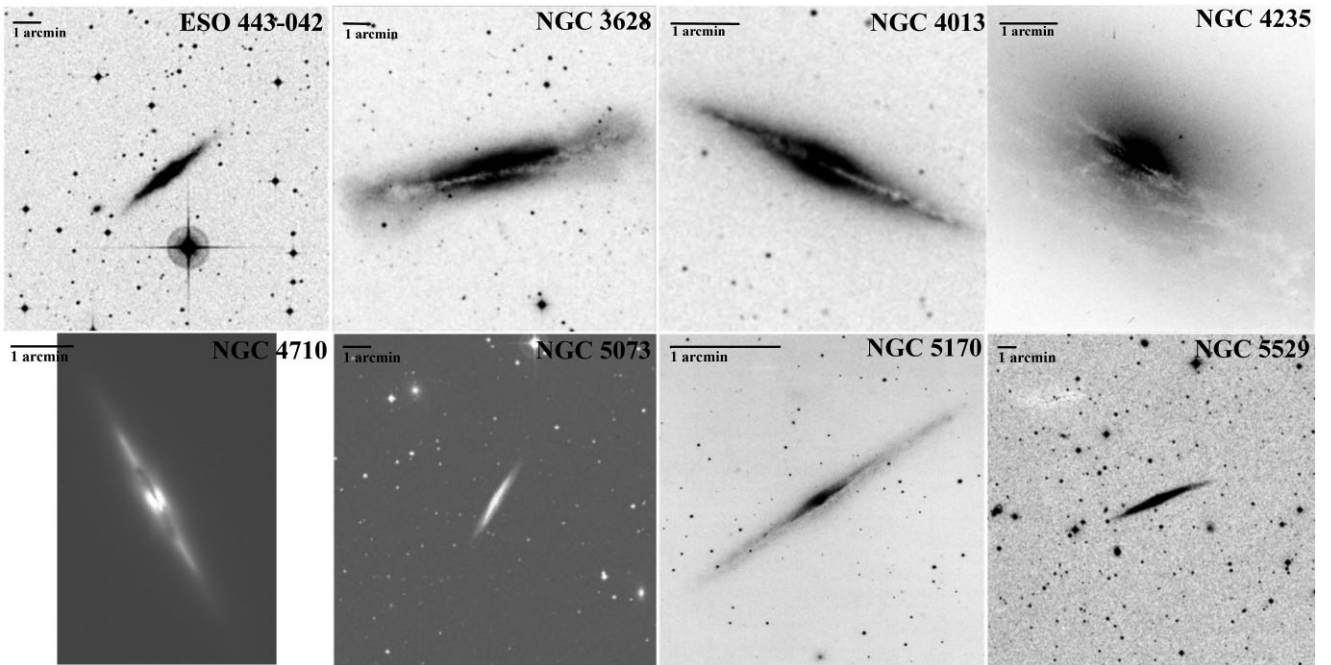
<sup>1</sup>The S<sup>4</sup>G images are available at <https://irsa.ipac.caltech.edu/data/SPITZER/S4G/index.html>

<sup>2</sup>Available at <https://ned.ipac.caltech.edu/>

**Table 1.** Properties of the sample of galaxies from S<sup>4</sup>G.

Galaxy	Morph. type	Distance (Mpc)	Disc PA (degree)	Disc $\epsilon$	X shape (kpc)	Disc PA from profile (degree)	Feature	Final sample
(1)	(2)	(3)	(4)	(5)	(6)	(7)	(8)	(9)
ESO 443-042	S <sub>x</sub> 0/a spw/E(d)8	47.4	127.7	0.859	$3.5 \times 3.3$	127.7	warped disc	yes
NGC 3628	SB <sub>x</sub> (nd)bc sp/E(b)8 pec	17.6	102.6	0.822	$3.0 \times 3.0$	104.0	warped disc	no
NGC 4013	SAB <sub>x</sub> a spw/E(d)7	15.6	65.1	0.818	$1.0 \times 1.0$	65.1	bright central star	yes
NGC 4235	SAB <sub>x</sub> 0 <sup>+</sup> sp	38.5	48.5	0.691	$4.5 \times 4.2$	49.3	warped disc	yes
NGC 4710	SB <sub>xa</sub> (nd)0 <sup>+</sup> sp/E(d)7	20.9	27.4	0.785	$2.5 \times 1.7$	27.8	dust + damaged image	no
NGC 5073	SAB <sub>xa</sub> 0/a sp	45.2	149.8	0.814	$3.0 \times 2.8$	148.8	lopsided + warped disc	no
NGC 5170	(R')SAB <sub>x</sub> (rl)0/a sp	26.6	126.3	0.853	$2.5 \times 1.7$	126.3	–	yes
NGC 5529	SB <sub>xab</sub> spw	45.1	115.0	0.850	$2.5 \times 3.3$	115.0	warped disc	no

(1) Galaxy name. (2) Morphological type from Buta et al. (2015). (3) Distance from NED, as obtained from the radial velocity with respect to the cosmic microwave background reference frame. (4) Disc position angle from Salo et al. (2015). (5) Disc ellipticity from Salo et al. (2015). (6) Semimajor (along  $z$ ) and semiminor (along  $x$ ) axes of the X-shaped structure. (7) Disc position angle from the comparison of the mean vertical profiles of the surface brightness. (8) Features identified by inspecting the galaxy image. (9) Inclusion in the final sample of galaxies.



**Figure 12.** Optical images of the parent sample of galaxies from S<sup>4</sup>G. All the images are oriented with the North at the top and the East at the left. Upper row (from left to right): ESO 443-042 (DSS), NGC 3628 (DSS), NGC 4013 (DSS), and NGC 4235 (*HST*). Lower row (from left to right): NGC 4710 (WIYN), NGC 5073 (DSS), NGC 5170 (DSS), and NGC 5529 (DSS).

for our sample of galaxies: the centres of the galaxies were calculated as the position where the surface brightness gradient is zero, and the disc PAs were found from the orientation of the outer isophotes fitted with ellipses. The galaxy parameters from Salo et al. (2015) are reported in Table 1.

In building the mid-plane asymmetry maps for our sample of galaxies using these parameters, it becomes clear that they are not sufficiently accurate for our purposes. Indeed, a dipolar signal (with typical size of 4–6 pixels) appears in the central part of many of the mid-plane asymmetry maps, which can be explained by a small error in the centre, as shown in Section 3.1.5. Likewise, using the Salo et al. (2015) parameters leads to a misidentification of the disc PA, resulting in a strong quadrupolar signal in the mid-plane asymmetry maps, similar to those discussed in Section 3.1.3. A more detailed analysis to identify the correct galaxy centre and disc PA is therefore necessary.

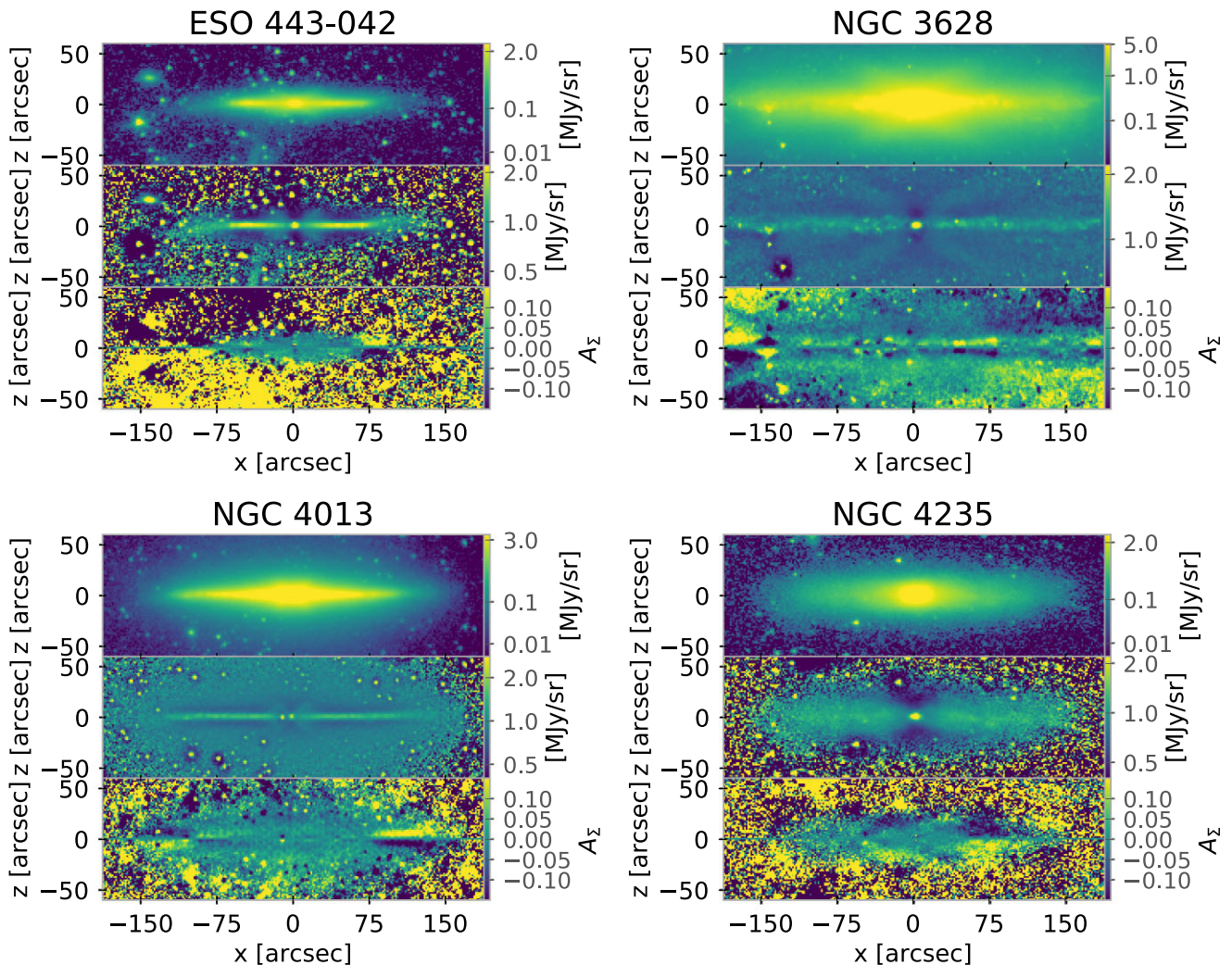
#### 4.2.1 Galaxy centre

To recover the correct galaxy centre, we perform the Fourier analysis described in Section 3.1.5. Specifically, the centre is allowed to vary by 0.5 pixel by up to 10 pixels (along both the  $x$ - and  $y$ -axes) and the disc PA by  $0.2^\circ$  within  $\pm 2^\circ$  of the values of Salo et al. (2015). We vary the extension of the central region  $R_{\max}$  to perform the Fourier analysis (with  $R_{\max}$  extending from  $\sim 50$  per cent to  $\sim 125$  per cent of the extension of the dipolar structure) and test that the identified centre is stable.

As a further check that our measurements of the galaxy centres are reliable, we calculate the asymmetry of the central part of the images (Conselice, Bershadsky & Jangren 2000)

$$A = \frac{|I - R|}{I} \quad (6)$$





**Figure 13.** Map of the surface brightness of the 3.6- $\mu\text{m}$  image (top panel), its unsharp masked version (middle panel), and mid-plane asymmetry map (bottom panel) of the parent sample of galaxies from S<sup>4</sup>G. Each image is rotated and centred to have the disc major axis aligned with the  $x$ -axis.

where  $I$  is the portion of the original image considered for the calculation and  $R$  is  $I$  rotated  $180^\circ$ . We vary the centre and the radial extension along which to perform the analysis and identify the correct centre as the one which minimizes  $A$ . We successfully confirm the centres identified with the Fourier analysis for most of the galaxy sample using this test. This confirmation of centres is not the case for NGC 4710, NGC 5073, NGC 5529 (which are discarded from the final analysis in the following), and NGC 4013, hosting a bright star nearby the centre, which makes it more difficult to apply our methods.

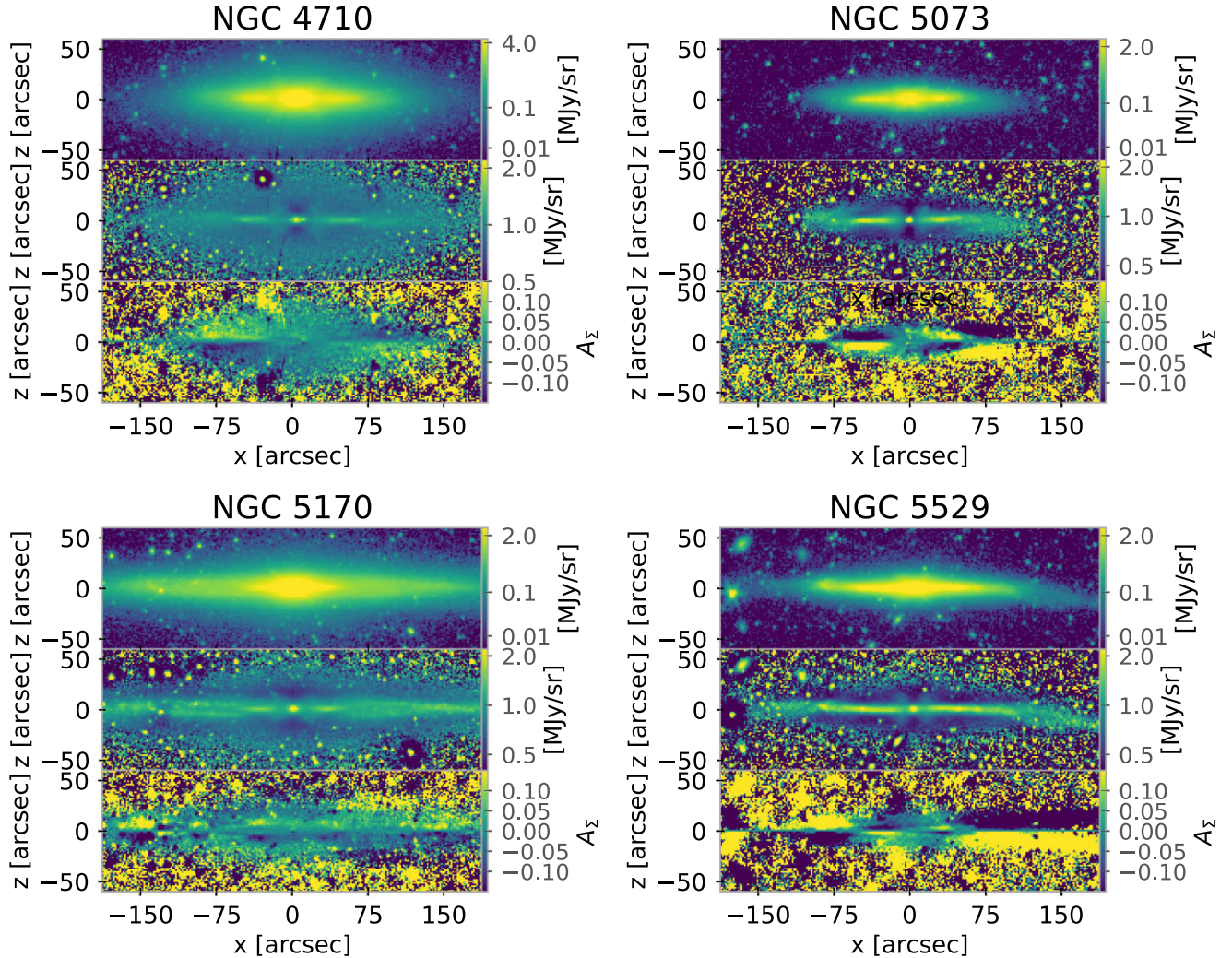
#### 4.2.2 Disc position angle

When the correct disc PA is used to build the mid-plane asymmetry map, no quadrupolar signal is present in the disc region and the corresponding mid-plane asymmetry profile is not sloped, as shown in Section 3.1. The initial guess of disc PA used in this work is based on an isophotal analysis of the outer region of the galaxies: a constant value of PA measured in the external radial range is assumed to be characteristic of the disc (Salo et al. 2015). Real galaxies often have warped discs and are also sometimes lopsided.

This warping complicates the identification of the correct disc PA and the measurement of the mid-plane asymmetry diagnostic.

To refine the measurement of the disc PA, we use the approach described in Section 3.1.3. In particular, we allow the disc PA to vary by  $0.2^\circ$  within  $2^\circ$  starting from the Salo et al. (2015) values, and compare the resulting profiles, after excluding the portion of the image hosting the galaxy halo. We also vary the extension of the two symmetric portions of the image, to test that the profiles remain superimposed when the disc PA is correctly identified.

To double check our estimate of the disc PA, we perform a Fourier analysis on the mid-plane asymmetry map using the radial extension of the disc and assuming the galaxy centre previously identified. We allow the disc PA to vary. We consider the right disc PA as the one that minimizes the  $m = 2$  component. We test if the identified disc PA remains constant when varying the radial extension of the portion of the image used for the Fourier analysis by 10–20 pixels and if it corresponds to the disc PA identified with the first approach. The disc PAs recovered from these two methods do not always coincide since sometimes the Fourier analysis is unable to identify a constant PA or it does not correspond to the previous estimate. This discrepancy may be due to the fact that we use a large portion of the image to perform the Fourier analysis here, since we need to include the

Figure 13 – *continued*

extension of the disc, so we are inevitably including a portion of sky in the same analysis, where spurious features are located, which can influence the value of the  $m = 2$  component. Unfortunately, this is unavoidable, but we check that in the cases where the disc PA from the Fourier analysis remains constant, that it corresponds to the one obtained with the first approach. In Table 1, we report the value of the disc PA from Salo et al. (2015) used as a first guess and the values obtained from our analysis.

## 5 MEASUREMENTS OF B/P ASYMMETRIES IN THE S<sup>4</sup>G SAMPLE

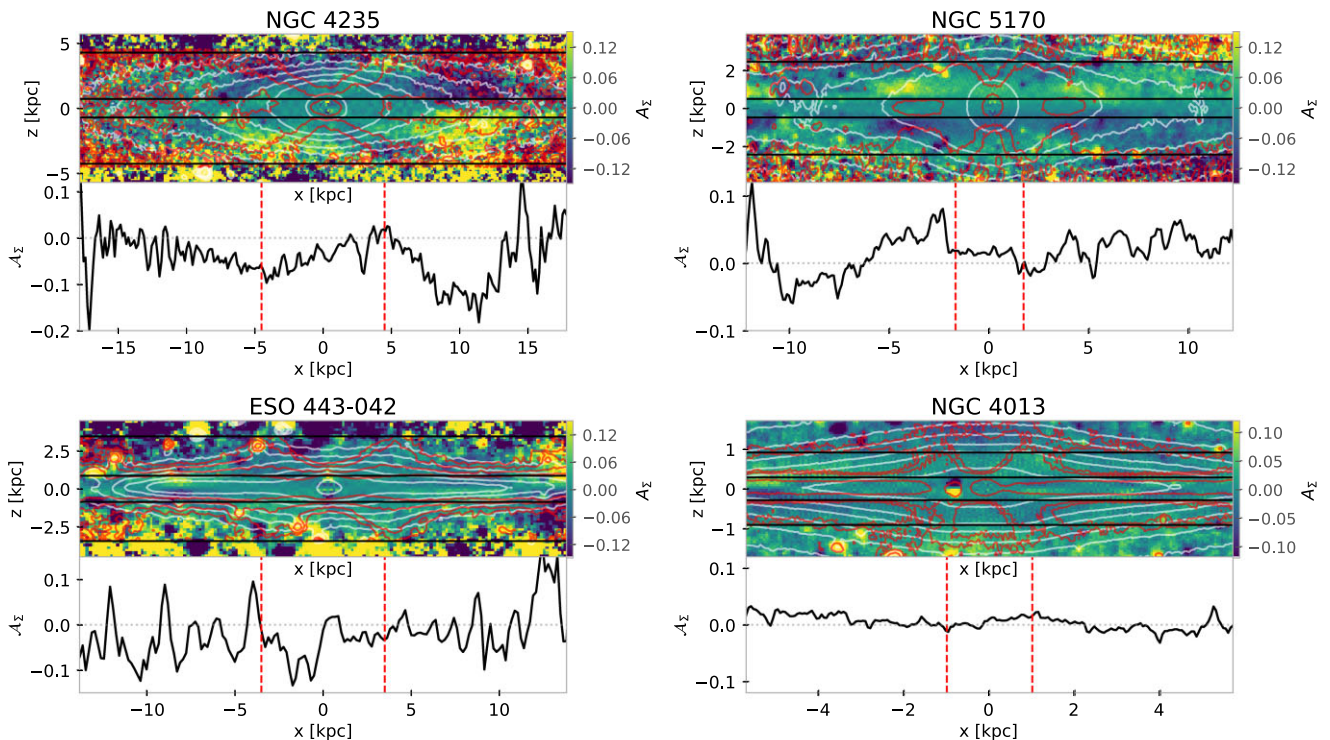
Here, we present the results of the B/P mid-plane asymmetry measurements for our parent sample of eight galaxies. In Fig. 13 (bottom panels), we show the resulting mid-plane asymmetry maps.

For NGC 3628, NGC 4710, NGC 5073, and NGC 5529, the mid-plane asymmetry maps are strongly affected by a quadrupolar signal (which affects at least half the extent of the galaxy itself). This signal implies that we were unable to correctly identify the disc PA, despite our careful analysis. Visual inspection of the S<sup>4</sup>G images of these galaxies and corresponding unsharp masked images (Fig. 13, middle panels) identifies strong and intrinsically asymmetric features in the

discs (such as warps and/or lopsided discs), which may have affected the measurement of the disc PA.

In particular, NGC 3628 hosts a warped disc. The distortion is visible in the image at  $|x| \gtrsim 100$  arcsec, while a strong quadrupolar signal appears at  $|x| \gtrsim 75$  arcsec. NGC 4710 hosts a double-peak near the centre, which may produce the small dipolar signal in the central region of the mid-plane asymmetry map. This feature is associated with an asymmetric dust lane, on each side of the centre, as suggested by Gonzalez et al. (2016). The outer regions of the disc appear more regular, despite a weak quadrupolar signal visible at  $|x| \sim 75$  arcsec. Moreover, the image of NGC 4710 suffers from columns of pixels with damaged/missing signal, affecting its entire left-hand side. Masking this region results in not being able to build effective mid-plane asymmetry diagnostics. NGC 5073 is warped at  $|x| \gtrsim 75$  arcsec, and lopsided, being more extended on the left-hand side. A resulting strong quadrupolar signal appears both in the central and in the outer regions of the disc, with an opposite sign, in the mid-plane asymmetry map. Finally, NGC 5529 also hosts a clearly warped disc, which produces a strong quadrupolar signal along both the central and the outer regions of the disc, with an opposite sign in the mid-plane asymmetry map. In Appendix B, we present the mid-plane asymmetry maps and corresponding mid-plane asymmetry profiles for these galaxies.





**Figure 14.** Mid-plane asymmetry diagnostics for our final sample. Top-left panel: mid-plane asymmetry map (upper panel) of the 3.6- $\mu$ m image of NGC 4235 with some isocontours of the surface brightness (white lines) and its unsharp mask (red lines) maps. The horizontal solid black lines mark the vertical extension of the regions (at  $0.7 < z < 4.2$  kpc) adopted to extract the mid-plane asymmetry radial profile (lower panel). Top-right panel: same as in the top-left panel, but for NGC 5170 with  $0.5 < z < 2.5$  kpc. Bottom-left panel: same as in the top-left panel, but for ESO 443-042 with  $0.9 < z < 3.3$  kpc. Bottom-right panel: same as in the top-left panel, but for NGC 4013 with  $0.3 < z < 1.0$  kpc.

For the remaining four galaxies, which build our final sample, ESO 443-042, NGC 4013, NGC 4235, and NGC 5170, we are able to identify the correct mid-plane. Their mid-plane asymmetry maps are unaffected by strong dipoles or quadrupoles. None the less, weak artefacts can be seen: for example, NGC 4013 has bright foreground stars near the centre that produce a bipolar signal in the mid-plane asymmetry map, while small outer portions of the discs in ESO 443-042, NGC 4013, and NGC 4235 are affected by a weak quadrupolar signal (i.e. with a limited extension with respect to the galaxy and/or affecting only the very outer part), which can be due to local asymmetries in the disc. In particular, the discs of ESO 443-042 and NGC 4235 are weakly warped. None the less, these features are very localized and far out in the disc, so the inner disc PA can be identified, while their effects do not compromise our subsequent analysis. Table 1 lists the features identified from visual inspection of the images and whether the galaxies are included or not in our final sample.

### 5.1 Galaxies with a mid-plane asymmetry

We identify a mild mid-plane asymmetry in NGC 4235 and NGC 5170 similar to what we found in model D5.

**NGC 4235** is a highly inclined S0 galaxy, hosting a prominent X-shaped structure (visible in the unsharp mask in Fig. 13) associated with a B/P bulge (Buta et al. 2015). The X-shaped structure has a semimajor axis of 4.5 kpc and a semiminor axis of 4.2 kpc. The disc is weakly warped in the very outer region resulting in a weak quadrupolar signal at  $|x| \sim 130$  arcsec.

The mid-plane asymmetry diagnostics are shown in Figs 13 and 14, top-left panel. We superimpose on the mid-plane asymmetry map the contours of the surface brightness of the galaxy (in white) and the contours of the unsharp mask (in red), which highlight the X shape. The red contours themselves appear asymmetric with respect to the mid-plane. The mid-plane asymmetry map reveals asymmetries at the edges of the X shape and further out, which extend till  $25 \lesssim |x| \lesssim 75$  arcsec before they disappear further out. However, these asymmetries are not symmetric with respect to the  $z$ -axis, being stronger and extending further on the right-hand side compared to the left (the peaks are located at  $x \sim -5$  kpc and at  $x \sim 10$  kpc). We calculate the mid-plane asymmetry profile adopting  $z_{\min} = 0.7$  kpc and  $z_{\max} = 4.2$  kpc: two peaks are present in the mid-plane asymmetry profile, reaching values of  $A_z(x) \sim 0.1$  on the left-hand side and  $\sim 0.15$  on the right-hand side, before decreasing to  $A_z(x) \sim 0$  further out in the disc. The mid-plane asymmetry profile resembles those observed at  $\sim 3$ –4 Gyr after the buckling event for models D5 and D8 (see Figs 4 and A11, respectively), or the one when the bar is not seen perfectly side-on for model D8 (Fig. A13).

**NGC 5170** is a S0/a galaxy, hosting an inner ring-lens and a near-outer ring made of spiral arms. The unsharp mask in Fig. 13 clearly highlights a prominent X shape, associated with a B/P bulge, and an ansae just beyond it (Buta et al. 2015). The B/P bulge has a small extension compared to the host galaxy.

The mid-plane asymmetry diagnostics are shown in Figs 13 and 14, top-right panel. The red contours appear asymmetric with respect to the mid-plane, extending to  $|x| \lesssim 3.3$  kpc. Further out, a mild mid-plane asymmetry in the surface brightness is visible, extending to  $|x| \lesssim 6.5$  kpc. This asymmetry disappears in the disc region on the



left-hand side at  $x < -6.5$  kpc, while it remains weak and extends further out on the left-hand side at  $x > 6.5$  kpc. The corresponding mid-plane asymmetry profile is calculated adopting  $z_{\min} = 0.5$  kpc and  $z_{\max} = 2.5$  kpc, and it shows a clear peak reaching  $\mathcal{A}_\Sigma(x) \sim 0.04$ , at  $x \sim -4$  kpc, which, however, does not present a complementary one at  $x \sim 4$  kpc.

## 5.2 Mid-plane symmetric galaxies

We do not find any evidence of mid-plane asymmetry in ESO 443-042 and NGC 4013, similar to the results for model HG1.

**ESO 443-042** is a highly inclined S0/a galaxy, hosting an X-shaped structure (visible in the unsharp mask in Fig. 13) associated with a B/P bulge (Buta et al. 2015). The disc shows evidence of warping. The corresponding distortion is located in the very outer region and is responsible for the weak quadrupolar signal visible at  $|x| \gtrsim 17.3$  kpc in the mid-plane asymmetry map.

The mid-plane asymmetry diagnostics are shown in Figs 13 and 14, bottom-left panel. The red contours in the mid-plane asymmetry map highlight the X-shaped structure, extending to  $|x| \lesssim 7$  kpc. No asymmetries in the surface brightness are evident. The corresponding mid-plane asymmetry profile is calculated adopting  $z_{\min} = 0.9$  kpc and  $z_{\max} = 3.3$  kpc; it remains flat over the entire range (i.e.  $|x| < 13.8$  kpc).

**NGC 4013** is a highly inclined Sa galaxy, hosting an X-shaped structure (visible in the unsharp mask in Fig. 13) associated with a B/P bulge, of small size compared to the galaxy (Buta et al. 2015). The disc shows evidence of weak warping, at  $|x| \gtrsim 6.0$  kpc, which produces a weak quadrupolar signal visible in the outer part of the mid-plane asymmetry map. Moreover, there is a bright star near the centre of the galaxy, which causes a clear dipolar signal in the central region of the asymmetry image.

The mid-plane asymmetry diagnostics are shown in Figs 13 and 14, bottom-right panel. The X-shaped feature extends to  $|x| \lesssim 1.5$  kpc. A clear dipolar signal is visible at  $x \sim -0.8$  kpc, due to presence of the bright star near the galaxy's centre. No asymmetries in the surface brightness are visible. We adopt  $z_{\min} = 0.3$  kpc and  $z_{\max} = 1.0$  kpc to calculate the mid-plane asymmetry profile, which remains flat in the entire range (i.e.  $|x| < 5.7$  kpc).

## 5.3 Mid-plane asymmetries from the stellar mass maps

We repeat our analysis and build the mid-plane asymmetry diagnostics using the old stellar population mass maps from Querejeta et al. (2015). The authors provide the processed  $3.6 \mu\text{m}$  images from S<sup>4</sup>G, after identifying and subtracting the dust emission, which reliably trace the old stellar flux. The processed images are available for our final sample of galaxies, except for NGC 5170: we find comparable results to the ones obtained using the  $3.6 \mu\text{m}$  images for NGC 4013 and NGC 4235, for which we present the resulting diagnostics in Appendix C. An exception is ESO 442-043, where the corresponding stellar mass map is distorted, and the X shape is barely distinguishable. The dust mainly affects the region, along the disc and the mid-plane asymmetry maps built using the stellar maps, are strongly affected by dust near the mid-plane.

Since we obtain compatible results when using  $3.6 \mu\text{m}$  images and the stellar mass maps except for the portion of the image very close to the mid-plane, and given these regions are excluded by definition from the calculation of our diagnostic (see equation 1), we conclude that the dust effect is reasonably well controlled using this method.

# 6 DISCUSSION

## 6.1 The time interval to detect evidence of a buckling event

The fraction of barred galaxies with  $M_* > 10^{10} M_\odot$  hosting B/P bulges increases from  $\sim 10$  per cent at  $z \sim 1$  to  $\sim 70$  per cent at  $z = 0$  (Kruk et al. 2019). This means most B/P bulges formed during the last  $\sim 7$  Gyr. We have explored the time-evolution of the mid-plane asymmetry produced by buckling in simulations, finding that it can be detected up to 4–5 Gyr after the event, which is a sufficiently long time to observe lingering asymmetries if a significant fraction of B/P bulges formed by buckling (e.g. Anderson et al. 2022). On the other hand, most of the models discussed here (including model D5), are pure *N*-body simulations, which evolve rapidly, because of the absence of gas. Therefore, the duration of the detectability of mid-plane asymmetries we find in these models is probably a lower limit for real galaxies.

We conclude that asymmetries produced by buckling should survive long enough to be measured for a sufficiently long-time interval. It would be fruitful to explore asymmetries at  $z \sim 0.5$ – $0.7$ , when the occurrence of buckling events is expected to peak (Erwin & Debattista 2016; Xiang et al. 2021).

## 6.2 Different mechanisms forming a B/P bulge

We have presented models that develop a B/P bulge via strong buckling, resulting in a mid-plane asymmetry. Instead, models that form B/P bulges either via weak (but recurrent) buckling or by resonant capture (Quillen 2002; Sellwood & Gerhard 2020; such as models HG1 or SD1 in Appendix A) give rise to mid-plane symmetry. At the same time, the mid-plane asymmetries produced by strong buckling weaken over time intervals varying from 1.5 to 5 Gyr. As a bar grows after the buckling event, it transfers angular momentum from the disc to the halo, while stars are trapped into resonance (Athanasoula 2003; Ceverino & Klypin 2007). Therefore, it is not possible to conclude whether the observed mid-plane symmetry is the result of the B/P bulge forming via weak buckling, or via resonant capture, or is merely the decayed remnant of a mid-plane asymmetry from strong buckling.

Simulations find that the buckling instability may happen more than once in the life of a galaxy (Martinez-Valpuesta et al. 2006; Łokas 2019). Due to the secular transport of angular momentum between the bar and the halo, after buckling the bar can grow and become unstable again to further buckling. The secondary buckling event lasts longer, so the bar bending could be easier to detect, and involves the outer part of the bar (Martinez-Valpuesta et al. 2006). If second bucklings are common, then this may increase the fraction of galaxies with significant mid-plane asymmetries at the present time.

## 6.3 Caveat for the mid-plane asymmetry diagnostics

The diagnostics we have developed require the correct identification of a galaxy centre and disc PA, which is not always trivial for observed galaxies, since many host warps and/or asymmetric discs, as well as dust, star-forming complexes and foreground stars. These can introduce artefacts in a mid-plane asymmetry map. In Section 3, we have carefully explored the effects of an erroneous identification of the mentioned galaxy parameters, concluding that they can be easily recognized and corrected, assuming the analysed galaxy is neither distorted nor hosts a strongly warped disc, as is the case in the models analysed here.

The effect of a non-perfectly edge-on view may be dramatic for the mid-plane asymmetry diagnostics. Indeed, asymmetries may appear in the mid-plane asymmetry map due to the presence of disc features, such as spiral arms or weak lopsidedness, when they are not observed edge-on, as in the case of the symmetric model HG1. On the other hand, mid-plane asymmetries due to a past strong buckling event weaken if the model is not observed perfectly edge-on, but remain distinguishable. This result implies that a spurious mid-plane asymmetry due to inclination effects is not easily distinguishable from the genuine one produced by the buckling instability. Our diagnostics are thus not effective when applied to a galaxy, which is not very close to edge-on. Determining whether a galaxy is indeed edge-on can be facilitated by the visual inspection of the orientation of dust lanes, which are often aligned along the disc major axis.

We emphasize that the effect of a wrong identification of the disc inclination  $i$  is the biggest weakness of the diagnostics developed here: it is not possible to distinguish between a mid-plane asymmetry produced by a genuine past buckling event and inclination effect already for a deviation of  $\pm 3^\circ$  from an edge-on view. Such views happens for only 5 per cent of a random distribution of galaxy orientations.

#### 6.4 Different shape and strength of the mid-plane asymmetries

We have selected galaxies from S<sup>4</sup>G, which has the largest available data base of deep, homogeneous mid-infrared images of  $\sim 2800$  galaxies of all types. Buta et al. (2015) identified more than 60 nearly edge-on galaxies with visually recognized X-shaped structures. Amongst these, we select the most edge-on galaxies, ending up with eight galaxies suitable for our mid-plane asymmetry analysis. However, we are able to build reliable mid-plane asymmetry maps for just four galaxies, since the other four are either strongly warped or cannot be centred properly (because they are intrinsically lopsided or distorted). Indeed, we found a residual quadrupole in half of the sample, suggesting that the mid-plane was not properly determined. For this reason, we conservatively decided to exclude these objects from our analysis. This highlights a possible difficulty in applying our mid-plane asymmetry diagnostics to larger samples.

Our final sample consists of four galaxies. Two of them, NGC 4235 and NGC 5170, have significant mid-plane asymmetries in the distribution of the surface brightness, which may indicate that a strong buckling event occurred sometime in their past.

Both recovered mid-plane asymmetries are peculiar in different ways. The mid-plane asymmetry in NGC 5170 is relatively weak, with the mid-plane asymmetry profile presenting just a single clear peak. NGC 5170 also exhibits a weak mid-plane asymmetry on the right-hand side of the disc, which continues out the region of the B/P bulge. A similar feature can be identified in model T1 (see Appendix A), where a double-peaked mid-plane asymmetry associated with the buckling event is visible, alongside a strong asymmetry further out in the disc only on its left-hand side. This one-side asymmetry is due to two weak spiral arms, as evident from inspecting the face-on view of the model. These produce a mid-plane asymmetry on one side of the disc region. Conversely, the asymmetries in NGC 4235 are stronger (reaching twice the values in NGC 5170), two peaks are clearly present along the mid-plane asymmetry profile, but they are asymmetric with respect to the  $z$ -axis. Mid-plane asymmetry profiles that are not symmetric with respect to the  $z$ -axis also occur during the evolution of models D5, D8, and T1. This asymmetry between the two peaks in the mid-plane asymmetry profile occurs only over a short-time interval when the galaxy is perfectly edge-on, and always just after the buckling event. A small

deviation from an edge-on view may also produce this left-right asymmetry, as found for model D5 (Section 3.1, at  $i = 87^\circ$ ).

The strength of the mid-plane asymmetry varies with time. In model D5, the asymmetries weaken rapidly during the first 1 Gyr after the buckling event and then more slowly during the following 4 Gyr, completely disappearing 5 Gyr after the buckling event. Moreover, weaker buckling generally produces weaker asymmetries (see e.g. the case of model T1 in Appendix A, whose mid-plane asymmetry disappears after just 1.5 Gyr). We therefore cannot exclude the possibility that NGC 5170 suffered a weak but recent buckling event. Indeed, the strength of the mid-plane asymmetry does not distinguish between a strong buckling long ago and a more recent, weaker buckling. Furthermore, we can not exclude the possibility that buckling is also responsible for the formation of the B/P bulge in the other two galaxies, ESO 443-042 and NGC 4013, since the mid-plane asymmetries may have decayed by the current epoch.

#### 6.5 Evidence of strong buckling or inclination effects?

Despite a clear mid-plane asymmetry in NGC 4235 and NGC 5170, we cannot exclude the possibility that they are caused by a non-perfectly edge-on view of the galaxies. Inspecting the optical images presented in Fig. 12, both galaxies present dust lanes along the disc and asymmetries with respect to the disc mid-plane. The optical dust lane itself cannot be used to unambiguously measure the disc inclination. However, the observed asymmetric dust lanes in both galaxies suggest that they are not perfectly edge-on. As a consequence, we conclude that we cannot distinguish if the observed mid-plane asymmetries are produced by a past buckling event, rather than the effect of inclination. Thus the asymmetric galaxies NGC 4235 and NGC 5170 cannot be used to infer whether a strong buckling event occurred in them. The diagnostics presented here are efficient in identifying mid-plane asymmetry due to a past buckling event when the galaxy is observed almost edge-on. Since galaxies are randomly oriented in the sky, just a small fraction will be suitable for this analysis.

We find two clear examples, ESO 443-042 and NGC 4013, of galaxies with clear mid-plane symmetry. Finding two symmetric cases suggests that strong buckling instabilities may be rare events in the past  $\sim 5$  Gyr.

Although we have used a small sample, our results suggest that B/P bulges either formed via weak buckling or resonant capture, or that very strong buckling events may take place preferentially a long time ago, longer than  $\sim 5$  Gyr, the expected time during which mid-plane asymmetries are expected to be visible (Fig. 4).

#### 6.6 Future prospects

While a handful of galaxies have now been found that are currently undergoing buckling (Erwin & Debattista 2016; Li et al. 2017; Xiang et al. 2021), buckling is so short-lived that we are unlikely to find many bars during this point in their evolution (Erwin & Debattista 2016). We have shown that buckling produces small but long-lasting asymmetries in the density distribution about the mid-plane. They allow B/P bulges formed by buckling to be identified in edge-on galaxies long after the buckling. To compare the relative efficiency of the two methods, the two buckling bar galaxies of Erwin & Debattista (2016) are drawn from a sample of 84 galaxies with orientations suitable for detecting B/P bulges (buckling or not). Instead the four galaxies with successful application of our diagnostics are drawn from a parent sample of eight galaxies suitable for this analysis,

closer to edge-on. Thus, the presence of mid-plane asymmetries may provide a powerful probe to test the origin of B/P bulges.

However, nearly edge-on galaxies are rare, but remain interesting laboratories for studying the physical processes involved in the formation and evolution of galaxies. Attention has been devoted to identifying and cataloguing these systems (e.g. Mitronova et al. 2004; Bizyaev et al. 2014; Makarov & Antipova 2021; Marchuk et al. 2022). High-resolution infrared imaging will soon be available with the *James Webb Space Telescope*, which will help explore current edge-on B/P samples across cosmic time. Meanwhile, future large space-based surveys (such as the *Euclid* mission operating in optical and near-infrared bands) will observe a larger number of galaxies. This large data set will enable more statistically meaningful studies of the occurrence of strong buckling in B/P bulges, but they require a careful selection of galaxies, including galaxies with a precise estimate of disc inclination, since the diagnostics presented here are efficient only for  $|i - 90^\circ| < 3^\circ$ .

## 7 CONCLUSIONS

The main goal of this paper is to develop diagnostics for identifying B/P bulges formed by buckling long after the event. We use simulations of barred galaxies that form a B/P bulge due both to strong buckling and recurrent weak buckling/resonant trapping. Strong buckling leaves an observable asymmetric distribution in the stellar density about the mid-plane. This asymmetry persists for between  $\sim 1.5$  and 5 Gyr. No similar asymmetry results when the B/P bulge is produced by either weak buckling or resonant capture. Based on this result, we develop two diagnostics to identify and quantify the asymmetries: the mid-plane asymmetry map and the mid-plane asymmetry profile, which we present in Section 2.1.

We explore the effects of varying galaxy orientation and other observational effects on the mid-plane asymmetry diagnostics, to identify the best conditions under which to apply them to real galaxies. Despite large artifacts resulting from an incorrect identification of the mid-plane and of the centre of the galaxy used to build the mid-plane asymmetry map, we demonstrate how these can be recognized in real galaxies. However, spurious mid-plane asymmetries may appear when the galaxy is not observed perfectly edge-on, for deviations larger than  $\pm 3^\circ$ . This issue is the strongest caveat when applying our method to observed galaxies, which are unlikely to be observed at  $i = 90^\circ$ , or for which it is difficult to derive the disc inclination.

We construct a sample of nearly edge-on galaxies in the  $S^4G$  catalog, based on previous identifications of X-shaped structures. We identify a parent sample of eight galaxies that are sufficiently edge-on for our analysis. None the less, we are only able to obtain reliable mid-plane asymmetry diagnostics in our final sample of four of these galaxies. Of these, two galaxies, NGC 4235 and NGC 5170, exhibit asymmetries resembling those found in the strongly buckling models. We cannot exclude that the observed mid-plane asymmetries result from a non-perfectly edge-on orientation of the galaxies since asymmetric dust lanes are visible in optical images of discs, hinting that the observed mid-plane asymmetries are probably due to inclination effects. Thus we cannot obtain strong conclusions about the origin of the mid-plane asymmetries in these two objects. In the other two galaxies, ESO 443-042 and NGC 4013, we do not find any significant mid-plane asymmetries. We cannot exclude the possibility that these two symmetric galaxies suffered a strong buckling a long time ago, and that the asymmetries have since disappeared. This possibility suggests that strong buckling is relatively rare in the past

5 Gyr and that B/P bulges are more likely to have formed before then, or formed via weak buckling and/or resonant trapping.

This paper is a pilot study to test the applicability of our diagnostics; stronger conclusions about the role of the buckling instability in the formation of B/P bulges requires a larger sample of very nearly edge-on galaxies.

## ACKNOWLEDGEMENTS

We thank the anonymous referee for valuable comments, which improved the paper. We are grateful to L. Beraldo e Silva for fruitful discussion. VC acknowledges support from the Chilean ANID through 2022 FONDECYT postdoctoral research grant 3220206 and from ESO-Government of Chile Joint Committee programme ORP060/19. VPD is supported by STFC Consolidated grant #ST/R000786/1. The simulations in this paper were run at the DiRAC Shared Memory Processing system at the University of Cambridge, operated by the COSMOS Project at the Department of Applied Mathematics and Theoretical Physics on behalf of the STFC DiRAC HPC Facility ([www.dirac.ac.uk](http://www.dirac.ac.uk)). This equipment was funded by BIS National E-infrastructure capital grant ST/J005673/1, STFC capital grant ST/H008586/1, and STFC DiRAC Operations grant ST/K00333X/1. DiRAC is part of the National E-Infrastructure. Model HG1 was run at the High Performance Computing Facility of the University of Central Lancashire. SAR acknowledges support by the National Science Foundation grant number PHY-1914679 and was supported for part of this work by Reed College. EMC acknowledges support by Padua University grants DOR1935272/19, DOR2013080/20, and DOR2021 and by MIUR grant PRIN 2017 20173ML3WW-001.

## DATA AVAILABILITY

The simulation data underlying this article will be shared on reasonable request to VPD ([vpdebattista@gmail.com](mailto:vpdebattista@gmail.com)).

The data from  $S^4G$  are available at <https://irsa.ipac.caltech.edu/data/SPITZER/S4G/index.html>, while the derived data will be shared on reasonable request to VC.

## REFERENCES

- Abbott C. G., Valluri M., Shen J., Debattista V. P., 2017, *MNRAS*, 470, 1526
- Aguirri J. A. L. et al., 2015, *A&A*, 576, A102
- Anderson S. R., Debattista V. P., Erwin P., Liddicott D. J., Deg N., Beraldo e Silva L., 2022, *MNRAS*, 513, 1642
- Athanassoula E., 1992, *MNRAS*, 259, 345
- Athanassoula E., 2003, *MNRAS*, 341, 1179
- Athanassoula E., 2005, *MNRAS*, 358, 1477
- Berentzen I., Heller C. H., Shlosman I., Fricke K. J., 1998, *MNRAS*, 300, 49
- Berentzen I., Shlosman I., Martinez-Valpuesta I., Heller C. H., 2007, *ApJ*, 666, 189
- Bizyaev D. V., Kautsch S. J., Mosenkov A. V., Reshetnikov V. P., Sotnikov N. Y., Yablokova N. V., Hillyer R. W., 2014, *ApJ*, 787, 24
- Bureau M., Freeman K. C., 1999, *AJ*, 118, 126
- Bureau M., Aronica G., Athanassoula E., Dettmar R. J., Bosma A., Freeman K. C., 2006, *MNRAS*, 370, 753
- Buta R. J., Corwin H. G., Odewahn S. C., 2007, *The de Vaucouleurs Atlas of Galaxies*. Cambridge Univ. Press, Cambridge
- Buta R. J. et al., 2015, *ApJS*, 217, 32
- Ceverino D., Klypin A., 2007, *MNRAS*, 379, 1155
- Chiba R., Schönrich R., 2021, *MNRAS*, 500, 4710
- Chung A., Bureau M., 2004, *AJ*, 127, 3192
- Collier A., 2020, *MNRAS*, 492, 2241
- Combes F., Sanders R. H., 1981, *A&A*, 96, 164
- Combes F., Debbasch F., Friedli D., Pfenniger D., 1990, *A&A*, 233, 82



- Conselice C. J., Bershadsky M. A., Jangren A., 2000, *ApJ*, 529, 886
- Debattista V. P., Mayer L., Carollo C. M., Moore B., Wadsley J., Quinn T., 2006, *ApJ*, 645, 209
- Debattista V. P., Ness M., Gonzalez O. A., Freeman K., Zoccali M., Minniti D., 2017, *MNRAS*, 469, 1587
- Debattista V. P., Liddicott D. J., Khachaturyants T., Beraldo e Silva L., 2020, *MNRAS*, 498, 3334
- de Vaucouleurs G., 1959, *Handbuch der Phys.*, 53, 275
- Erwin P., 2019, *MNRAS*, 489, 3553
- Erwin P., Debattista V. P., 2013, *MNRAS*, 431, 3060
- Erwin P., Debattista V. P., 2016, *ApJ*, 825, L30
- Erwin P., Debattista V. P., 2017, *MNRAS*, 468, 2058
- Fragkoudi F. et al., 2020, *MNRAS*, 494, 5936
- Gardner E., Debattista V. P., Robin A. C., Vásquez S., Zoccali M., 2014, *MNRAS*, 438, 3275
- Gerssen J., Debattista V. P., 2007, *MNRAS*, 378, 189
- Gonzalez O. A., Zoccali M., Debattista V. P., Alonso-García J., Valenti E., Minniti D., 2015, *A&A*, 583, L5
- Gonzalez O. A. et al., 2016, *A&A*, 591, A7
- Holwerda B. W., Gonzalez R. A., Allen R. J., van der Kruit P. C., 2005, *AJ*, 129, 1396
- Johnson C. I., Rich R. M., Kobayashi C., Kunder A., Pilachowski C. A., Koch A., de Propriis R., 2013, *ApJ*, 765, 157
- Khoperskov S., Di Matteo P., Gerhard O., Katz D., Haywood M., Combes F., Berczik P., Gomez A., 2019, *A&A*, 622, L6
- Kruk S. J., Erwin P., Debattista V. P., Lintott C., 2019, *MNRAS*, 490, 4721
- Laurikainen E., Salo H., 2016, in Laurikainen E., Peletier R. F., Gadotti D. A., eds. *Galactic Bulges, Astrophysics and Space Science Library*, Vol. 418. Springer International Publishing, Switzerland, p. 77
- Laurikainen E., Salo H., 2017, *A&A*, 598, A10
- Laurikainen E., Salo H., Athanassoula E., Bosma A., Herrera-Endoqui M., 2014, *MNRAS*, 444, L80
- Li Z.-Y., Shen J., 2015, *ApJ*, 815, L20
- Li Z.-Y., Ho L. C., Barth A. J., 2017, *ApJ*, 845, 87
- Łokas E. L., 2019, *A&A*, 629, A52
- Łokas E. L., 2020, *A&A*, 634, A122
- Lütticke R., Dettmar R. J., Pohlen M., 2000, *A&AS*, 145, 405
- Makarov D. I., Antipova A. V., 2021, *Astrophysical Bulletin*, 76, 218
- Marchuk A. A. et al., 2022, *MNRAS*, 512, 1371
- Martinez-Valpuesta I., Shlosman I., Heller C., 2006, *ApJ*, 637, 214
- McWilliam A., Zoccali M., 2010, *ApJ*, 724, 1491
- Merritt D., Sellwood J. A., 1994, *ApJ*, 425, 551
- Mitronova S. N., Karachentsev I. D., Karachentseva V. E., Jarrett T. H., Kudrya Y. N., 2004, *Bull. Spec. Astrophys. Obs.*, 57, 5
- Muñoz-Mateos J. C. et al., 2013, *ApJ*, 771, 59
- Nataf D. M., Udalski A., Gould A., Fouqué P., Stanek K. Z., 2010, *ApJ*, 721, L28
- Ness M., Lang D., 2016, *AJ*, 152, 14
- Ness M. et al., 2013, *MNRAS*, 430, 836
- O'Neill J. K., Dubinski J., 2003, *MNRAS*, 346, 251
- Padilla N. D., Strauss M. A., 2008, *MNRAS*, 388, 1321
- Park S. K., Schowengerdt R. A., 1983, *Comput. Graph. Image Process.*, 23, 258
- Patsis P. A., Skokos C., Athanassoula E., 2002, *MNRAS*, 337, 578
- Pfenniger D., 1984, *A&A*, 134, 373
- Pfenniger D., Friedli D., 1991, *A&A*, 252, 75
- Planck Collaboration XIII, 2016, *A&A*, 594, A13
- Portail M., Wegg C., Gerhard O., Martinez-Valpuesta I., 2015, *MNRAS*, 448, 713
- Querejeta M. et al., 2015, *ApJS*, 219, 5
- Quillen A. C., 2002, *AJ*, 124, 722
- Quillen A. C., Minchev I., Sharma S., Qin Y.-J., Di Matteo P., 2014, *MNRAS*, 437, 1284
- Raha N., Sellwood J. A., James R. A., Kahn F. D., 1991, *Nature*, 352, 411
- Rojas-Arriagada A. et al., 2017, *A&A*, 601, A140
- Saha K., Pfenniger D., Taam R. E., 2013, *ApJ*, 764, 123
- Saito R. K., Zoccali M., McWilliam A., Minniti D., Gonzalez O. A., Hill V., 2011, *AJ*, 142, 76
- Salo H. et al., 2015, *ApJS*, 219, 4
- Sellwood J. A., Gerhard O., 2020, *MNRAS*, 495, 3175
- Shen J., Rich R. M., Kormendy J., Howard C. D., De Propriis R., Kunder A., 2010, *ApJ*, 720, L72
- Sheth K. et al., 2010, *PASP*, 122, 1397
- Smirnov A. A., Sotnikova N. Y., 2018, *MNRAS*, 481, 4058
- Smith M. W. L. et al., 2016, *MNRAS*, 462, 331
- Toomre A., 1966, in Marsden B. G., Cameron A. G. W., eds. *The Earth-Moon System*. Plenum Press, New York, NY, p. 33
- Unterborn C. T., Ryden B. S., 2008, *ApJ*, 687, 976
- Wainscoat R. J., Freeman K. C., Hyland A. R., 1989, *ApJ*, 337, 163
- Wozniak H., Michel-Dansac L., 2009, *A&A*, 494, 11
- Xiang K. M. et al., 2021, *ApJ*, 909, 125
- Yoshino A., Yamauchi C., 2015, *MNRAS*, 446, 3749
- Zoccali M., Hill V., Lecureur A., Barbuy B., Renzini A., Minniti D., Gómez A., Ortolani S., 2008, *A&A*, 486, 177
- Zoccali M. et al., 2017, *A&A*, 599, A12

## SUPPORTING INFORMATION

Supplementary data are available at *MNRAS* online.

**APPENDIX A:** Asymmetries diagnostics for simulated data.

**APPENDIX B:** Mid-plane asymmetry diagnostics for the discarded galaxies.

**APPENDIX C:** Mid-plane asymmetry diagnostics for the stellar mass maps of the galaxies.

Please note: Oxford University Press is not responsible for the content or functionality of any supporting materials supplied by the authors. Any queries (other than missing material) should be directed to the corresponding author for the article.

This paper has been typeset from a  $\text{\LaTeX}$  file prepared by the author.