

Central Lancashire Online Knowledge (CLOK)

Title	Concurrent Validity and Reliability of Two-dimensional Frontal Plane Knee Measurements during Multi-directional Cutting Maneuvers
Type	Article
URL	https://clock.uclan.ac.uk/39950/
DOI	10.26603/001c.31651
Date	2022
Citation	Irawan, Dimas Sondang, Huoth, Chantheng, Sinsurin, Komsak, Kiratisin, Pongthanayos, Vachalathiti, Roongtiwa and Richards, James (2022) Concurrent Validity and Reliability of Two-dimensional Frontal Plane Knee Measurements during Multi-directional Cutting Maneuvers. The International Journal of Sports Physical Therapy, 17 (2). pp. 148-155.
Creators	Irawan, Dimas Sondang, Huoth, Chantheng, Sinsurin, Komsak, Kiratisin, Pongthanayos, Vachalathiti, Roongtiwa and Richards, James



It is advisable to refer to the publisher's version if you intend to cite from the work.
10.26603/001c.31651

For information about Research at UCLan please go to <http://www.uclan.ac.uk/research/>

All outputs in CLOK are protected by Intellectual Property Rights law, including Copyright law. Copyright, IPR and Moral Rights for the works on this site are retained by the individual authors and/or other copyright owners. Terms and conditions for use of this material are defined in the <http://clock.uclan.ac.uk/policies/>

Original Research

Concurrent Validity and Reliability of Two-dimensional Frontal Plane Knee Measurements during Multi-directional Cutting Maneuvers

Dimas Sondang Irawan¹, Chantheng Huoth¹, Komsak Sinsurin¹ ^a, Pongthanayos Kiratisin¹, Roongtiwa Vachalathiti², Jim Richards³ 

¹ Biomechanics and Sports Research unit, Faculty of Physical Therapy, Mahidol University, ² Musculoskeletal Physical Therapy Research unit, Faculty of Physical Therapy, Mahidol University, ³ Allied Health Research unit, University of Central Lancashire

Keywords: side-step cutting, knee valgus, injury risk screening, sport clinical tool, acl injury

<https://doi.org/10.26603/001c.31651>

International Journal of Sports Physical Therapy

Vol. 17, Issue 2, 2022

Background

Excessive knee valgus has been strongly suggested as a contributing key factor for anterior cruciate ligament (ACL) injuries. Three-dimensional (3D) motion analysis is considered the “gold standard” to assess joint kinematics, however, this is difficult for on-field assessments and for clinical setting.

Purpose

To investigate the concurrent validity of 2D measurements of knee valgus angle during cutting in different directions and to explore intra-rater and inter-rater reliability of the 2D measurements.

Study Design

Descriptive laboratory study

Method

Seven recreational soccer players participated in this study. Participants performed three trials of cutting maneuvers in three different directions (30°, 60°, and 90°) with the dominant leg. Cutting maneuvers were recorded simultaneously with a video camera and a Vicon™ motion capture system. Knee valgus angle from 2D and 3D measurements at initial contact and at peak vertical ground reaction force (vGRF) were extracted. The Pearson's correlation was used to explore the relationship between the 2D and 3D measurements, and reliability of the 2D measurements were performed using intraclass correlation coefficients (ICC).

Result

Significant correlations between 2D and 3D knee valgus measurements were noted for 60° ($r = 0.45$) and 90° ($r = 0.77$) cutting maneuvers at initial contact. At peak vGRF, significant correlations between 2D and 3D knee valgus measurements were noted for 30°, 60°, and 90° cutting maneuvers ($r=0.45$, $r=0.74$, $r=0.78$), respectively. Good-to-excellent intra-rater and inter-rater reliability of the 2D knee valgus measurements was observed during cutting in all directions (ICCs: 0.821-0.997).

Conclusion

Moderate-to-strong correlation between 2D and 3D knee valgus measurements during

^a **Corresponding Author:**

Komsak Sinsurin, PT, Ph.D., DPT
Biomechanics and Sports Research unit, Faculty of Physical Therapy, Mahidol University, 999 Phuttamonthon 4 Road, Salaya, Nakhon Pathom 73170, Thailand.
Tel: +6624415450, Fax: +6624415454
E-mail: komsak.sin@mahidol.edu

60°-90° cutting maneuvers, and good-to-excellent intra-rater and excellent inter-rater reliability for the 2D measurements in the present study supports the use of 2D knee valgus measurements in the evaluation of targeted interventions, although the limitations of examining cutting maneuvers using 2D measurement in complex movement still need to be considered.

Level of Evidence

3

INTRODUCTION

ACL injury is a common and serious problem in sports and requires a long period of rehabilitation.¹⁻³ A rate of 6.5 ACL injuries per 100,000 athlete exposures throughout various athletic activities was reported in high school level. Approximately 76% of ACL injuries require surgery, which consumes time and money for recovery and may ultimately reduce the quality of life by increasing the risk of subsequent injuries or impairments, resulting in financial hardship.^{2,4} After ACL reconstruction, 55% of injured athletes can reach return to competitive level.⁵ However, athletes with ACL deficiency have greater risk of early-onset osteoarthritis of the knee.⁶ Therefore, ACL injury prevention and risk screening are important.

Excessive knee valgus has been strongly suggested as a contributing factor to anterior cruciate ligament (ACL) injuries.⁷⁻⁹ Seventy to eighty-four percent of ACL injuries occur during non-contact while decelerating or rapidly changing direction in sporting activities.¹⁰ In addition, the combination of knee valgus with poor trunk or hip control has been identified as a key predictor of ACL strain including hip adduction, hip internal rotation, and ipsilateral trunk leaning.^{11,12}

Observation of the knee valgus angle is considered a critical component for injury risk assessment and often performed during functional tasks such as single-leg squat and landing tasks which are typically carried out in clinical and sports settings.¹³⁻¹⁵ Three-dimensional (3D) motion capture is considered as the “gold standard” to determine the quality of human movement. Such a system is able to evaluate multi-planar kinematics across joints and has been shown to be reliable in the assessment of many functional tasks such as landing tasks and cutting maneuvers.^{16,17} However, a 3D motion system is not practical within field and clinical settings due to cost, complexity, and time required to perform the analysis.

Previous studies have developed alternative two-dimensional (2D) methods and compared these with 3D methods for use in clinical settings.¹⁸⁻²¹ 2D measurement using commercial cameras is one method which is relatively inexpensive and easy to apply in field and clinical settings.²² 2D measurements have been used to examine dynamic knee valgus using the frontal plane projection angle (FPPA), which has shown good reliability in performance test such as running, drop jump, and single leg landing, which can provide biomechanical measurements to assess injury risk and progression through treatment.^{18-20,23} However, the use of 2D methods to assess cutting maneuvers in various directions has not been reported.

Cutting maneuvers are frequently performed during sports training sessions. Previous studies have demon-

strated that different knee valgus angles were noted with different directions of cutting, which are important to consider for injury risk in sporting settings.²⁴⁻²⁶ Therefore, the potential to apply 2D measurements to determine knee valgus angle during cutting maneuvers in various directions is worthy of investigation.

To the best of authors' knowledge, the use of 2D analysis to explore knee valgus angle during side-step cutting maneuvers in multi-directions has yet to be reported. Therefore, the purpose of the present study was to investigate the concurrent validity of 2D measurements of knee valgus angle during cutting in different directions, and to explore intra-rater and inter-rater reliability of the 2D measurements. The hypothesis of the study was that 2D frontal knee measurement would have good validity and reliability in multi-directional cutting maneuvers.

METHODS

PARTICIPANTS

All participants were university students who volunteered to participate in the study. The inclusion criteria were: aged between 18- to 25-years, and regularly participated in sports involving cutting maneuvers. Participants were excluded from the study if they reported a history of lower extremity surgery or a history of serious injury of lower extremity within a year prior to testing. The research protocol was approved by the Mahidol University Central Institutional Review Board for Human Research (COA.No. 2020/062.2704). Before testing, all participants signed an informed consent form and the protocol was explained in detail.

SIDE-STEP CUTTING MANEUVERS

Athletes performed side-step cutting maneuvers in the three different directions: 30°, 60°, and 90° ([Figure 1](#)). The participants were instructed to stand at the starting point, run forward five meters and perform a side-step cutting task with the dominant leg. The standardized verbal command for all participants was “keep looking forward and perform a side-step cutting at maximum speed”.

The participants performed a five-minute warm up of lower limb dynamic stretching and practiced five trials of side-step cutting before actual testing in each direction. Three completed trials of each directional session were then measured and analyzed, and the knee valgus angles from the 2D and 3D measurements were extracted at initial contact and at peak vertical ground reaction force (vGRF).

2D MEASUREMENTS

A commercially available digital camera (Canon EOS 1200D, Canon USA Inc, Melville, USA) with a 18-55 mm lens, was positioned 2 m away from the force plate at a height of 60 cm and recorded at 60 Hz. Digital video footage was recorded with no optical zoom to standardized the camera image between participants. Video footage was imported to Kinovea software (Version 0.9.3, Kinovea Open Source Project, www.kinovea.org) and 2D knee measurement was processed. The frontal plane projection angle (FPPA) was used to estimate the knee valgus angle by measuring the angle between the line from ASIS to the center of patella, and the line from the ASIS to the center of the ankle joints, which was then subtracted from 180° (Figure 2).¹⁸ Two raters assessed the FPPA in the study. They are physical therapists who have experience in 2D measurement and in ten years of orthopedic and sports physical therapy. Each rater measured knee valgus angle of a data set which the information regarding cutting directions was encrypted by code. In order to determine intra-rater reliability, the first rater measured the FPPA twice, two weeks apart.

3D MEASUREMENTS

A 10 camera ViconTM motion analysis system (Vicon nexus 2.10, Oxford Metrics, Oxford, UK) was used to record three-dimensional marker coordinates at 200 Hz. Force data was collected synchronously using an AMTI force platform at 1,000 Hz (AMTI-OR67, Advance Mechanical Technologies Inc., Watertown, USA) which was used to identify stance phase during the cutting maneuvers. Twenty-six reflective markers were attached on the bony prominences of both sides, including anterior superior iliac spine (ASIS), posterior superior iliac spine (PSIS), iliac crest, greater trochanter, medial and lateral femoral epicondyles, medial and lateral malleoli, distal head of the first metatarsals, distal head of the fifth metatarsals, proximal head of the fifth metatarsals, and heels. In addition, four rigid clusters of four markers were placed on the lateral thigh and lateral shank (Figure 3 and 4).

Kinematic and kinetic data were imported into Visual 3D software (C-Motion Inc, Germantown, USA), and digitally filtered using a low pass, fourth-order Butterworth filter with cut-off frequencies of 6 Hz and 35 Hz, respectively.^{27,28} Right-hand 3-dimensional Cartesian coordinate systems were used for global and segmental axes. The pelvis segment was measured relative to the global (laboratory) coordinate system, and the hip joint center was estimated using method reported by Bell et al.²⁹ Knee and ankle joint centers were estimated as the midpoint between the medial and lateral femoral epicondyles and malleoli, respectively, and the knee joint angle was calculated between the shank relative to the thigh segment. Kinetics and kinematics data were extracted and normalized into 101 data points in order to represent 100% of the stance phase during side-step cutting maneuver.

STATISTICAL ANALYSIS

Three completed trials of cutting tests in each direction

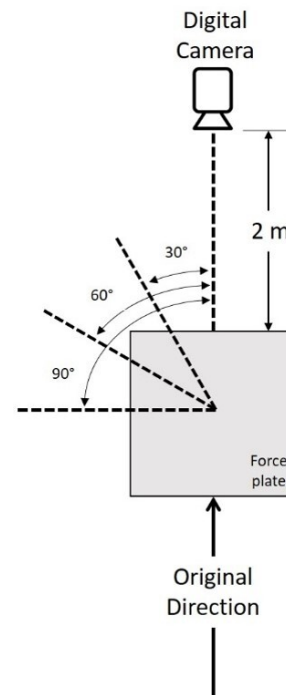


Figure 1. Illustrations of research setting of side-steps cutting test

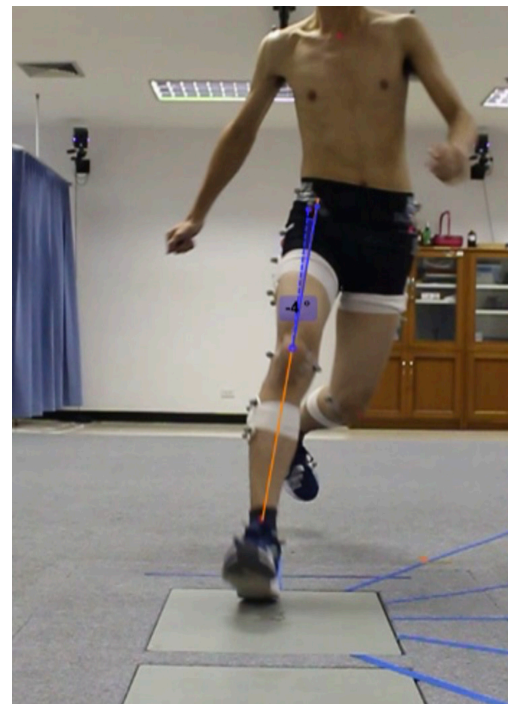


Figure 2. 2D measurement of the frontal plane projection angle (FPPA) during cutting maneuvers

were processed from the seven soccer players in the study. Then, a total of 21 data sets were statistically analyzed. To determine the concurrent validity, Pearson product-moment correlation was used to assess the linear relationships between the 2D and 3D measurements of the knee valgus

angle at initial contact and at peak vGRF. The strength of the correlation (r) was interpreted as poor (0 to 0.49), moderate (0.50 to 0.75), and strong (> 0.75).³⁰ Reliability analysis of the 2D measurements was performed using intra-class correlation coefficient (ICC). The ICC(3,1) and ICC(2,1) models were used for statistical analysis of intra-rater and inter-rater reliabilities, respectively. Reliability index of ICC were interpreted as poor (less than 0.5), moderate (0.5-0.75), good (0.76-0.9), and excellent (> 0.9).³¹

RESULTS

Seven male soccer players, all with more than four years experience in soccer playing voluntarily participated. The characteristics of the participants are shown in [Table 1](#). The Pearson's correlation coefficients between 2D and 3D measurements of the FPPA at initial contact showed a significant strong correlation during 90° cutting ($r = 0.77$, 95% CI: 0.34 - 0.89), with 60° cutting showing a significant but poor correlation ($r = 0.45$, 95% CI: -0.07 - 0.83), and 30° cutting showing no significant correlation. For the FPPA at peak vGRF a significant correlation was seen between 2D and 3D analyses in all directions of cutting, with 90° cutting showing a strong correlation ($r = 0.78$, 95% CI: 0.19 - 0.87), 60° cutting showing a moderate correlation ($r = 0.74$, 95% CI: 0.31 - 0.89), and 30° cutting showing a poor correlation ($r = 0.45$, 95% CI: -0.14 - 0.81), [Table 2](#). The FPPA measurements demonstrated good-to-excellent intra-rater reliability at initial contact (ICCs: 0.821-0.937) and at peak vGRF (ICCs: 0.970-0.987). In addition, the inter-rater reliability index showed excellent reliability at initial contact (ICCs: 0.974-0.987) and at peak vGRF (ICCs: 0.989-0.997), [Table 3](#).

DISCUSSION

The purpose of this study was to determine the concurrent validity and reliability of 2D frontal knee measurements during multi-directional cutting maneuvers. To explore the concurrent validity, knee valgus angles at initial contact and at peak vGRF were captured with 2D and 3D measurements, simultaneously. Moreover, the intra-rater and inter-rater reliabilities of the 2D measurements of knee valgus were determined. The findings of the present study showed that there were statistically significant correlations between most 2D and 3D measurements, and the reliability indices of 2D measurement showed good-to-excellent intra- and inter-rater reliability at both initial contact and peak vGRF.

Cutting maneuvers require a sudden change of direction after running and involves translation and reorientation into new direction of travel.³² This study used the frontal plane projection angle (FPPA) from 2D measurement which has been reported to be highly influenced by hip and knee joint rotations in the transverse plane.³³ The present findings confirmed a poor correlation of 2D and 3D knee valgus measurements at initial contact during cutting maneuvers at 30° and 60° and peak vGRF at 30°. This further supported by Schurr et al.³⁴ who found a poor correlation ($r = 0.31$) in the frontal plane knee angle between 2D and 3D analyses



Figure 3. 2D and 3D marker placements in anterior view

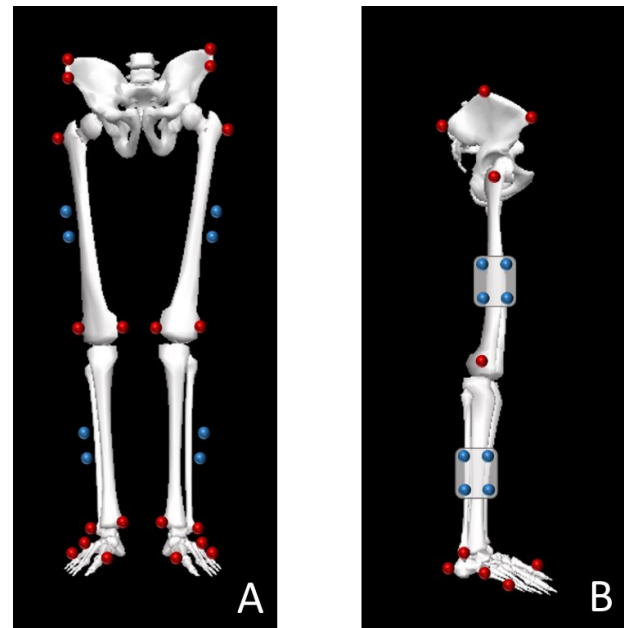


Figure 4. Calibrated Anatomical System Technique (CAST) marker model of lower extremity; A, anterior view and B, lateral view

during a single-leg squat. In addition, Maykut et al.²⁰ considered knee valgus angles during running on treadmill and also showed a poor correlation between 2D and 3D analyses ($r = 0.158$). Maykut et al. suggested that the difference of sampling frequencies may explain the non-significant correlation between the 2D and 3D measurements, when using

Table 1. Characteristics of participants (n = 7)

Characteristics	Mean (\pm SD) or number
Gender (male / female)	7 / 0
Age (years)	23 (0.81)
Experience (years)	4
Height (cm)	169.25 (4.57)
Mass (kg)	57 (7.75)
BMI (kg/m ²)	20.54 (1.5)
Leg dominance (% Right)	100

SD: standard deviation; BMI: Body Mass Index

Table 2. Pearson's correlation coefficients of 2D and 3D knee valgus measurements at initial contact and at peak vGRF phases

Time event	Angle of cutting direction	r	95% CI	p
IC	30°	-0.02	-1.56, 0.58	0.533
	60°	0.45	-0.07, 0.83	0.034*
	90°	0.77	0.34, 0.89	0.002*
Peak vGRF	30°	0.45	-0.14, 0.81	0.046*
	60°	0.74	0.31, 0.89	0.003*
	90°	0.78	0.19, 0.87	0.008*

* Statistically significant correlation ($p \leq 0.05$); IC: initial contact; vGRF: vertical ground reaction force**Table 3. Intra-rater and inter-rater reliabilities of 2D knee valgus measurements at initial contact and at peak vGRF phases.**

Time event	Cutting direction	Intra-rater ICC (95% CI)	Inter-rater ICC (95% CI)
IC	30°	0.937 (0.631 – 0.989)	0.974 (0.847 – 0.995)
	60°	0.821 (-0.04 – 0.969)	0.983 (0.899 – 0.997)
	90°	0.925 (0.564 – 0.987)	0.987 (0.926 – 0.988)
Peak vGRF	30°	0.987 (0.926 – 0.998)	0.994 (0.968 – 0.999)
	60°	0.970 (0.828 – 0.995)	0.989 (0.934 – 0.998)
	90°	0.978 (0.875 – 0.996)	0.997 (0.981 – 0.999)

IC: initial contact; vGRF: vertical ground reaction force

60 Hz for the 2D measurement and 240 Hz for the 3D measurement.

However, the current study did show some significant correlations at initial contact and at peak vGRF during cutting maneuvers. At peak vGRF the correlations were strong ($r=0.78$), moderate ($r=0.74$), and poor ($r=0.45$) for cutting maneuvers at 90°, 60°, and 30°, respectively, with correlation at initial contact being strong ($r=0.77$), moderate ($r=0.45$), and very poor ($r=-0.02$) for 90°, 60°, and 30°, re-

spectively. Both Maykut et al.²⁰ and Schurr et al.³⁴ reported peak knee abduction angles and knee angle displacements in frontal plane, respectively, while the current study reported values at initial contact and peak vGRF. Therefore, the different time events could be a possible reason for differences seen with previous studies.

McLean et al.³³ demonstrated a moderate correlation between 2D and 3D measurements. McLean et al. investigated 35° and 55° cutting and side-jump tasks in healthy male and

female collegiate basketball players, and reported moderate correlations $r = 0.58$ and $r = 0.64$ for the 35° and 55° cutting tasks and side jump, respectively. Havens et al.²⁶ demonstrated 35° greater pelvic rotation to the intended direction during 90° cutting compared with 45° cutting. The current study showed strong correlations in 90° cutting, moderate correlations at 60° , and poor correlation at 30° cuttings (Table 2). The difference seen could be due to the difference in tasks explored. Schurr et al.³⁴ and Maykut et al.²⁰ studied single-leg squat and running, respectively.

Regarding multi-directional cutting maneuvers, Dos santos et al.²⁴ stated that there was a relationship between directions and biomechanical demands. Greater hip abduction and knee valgus angles were observed as the angle of directional change increases. The current findings indicate that knee valgus screening using 2D measurements for 60° and 90° cutting tasks could be considered as a suitable assessment for use in clinical settings, and may be useful as an injury screening tool to help health professionals observe frontal knee projection during cutting. The possible explanation of poor correlation in 30° cutting might due to the athlete's pelvic rotation to the intended direction prior to initial contact. Rotational movement could lead to a bit of difficulty of maker capture for 2D measurement. Comparing results of 2D knee valgus between studies should be interpreted with caution due to previous limitations reported when examining 2D measurements, and further work is required to explore the clinical utility of such measures in term of knee valgus magnitude.³⁵

In addition, 2D knee valgus measurements in this study showed good-to-excellent intra-rater and excellent inter-rater reliabilities. This suggests that 2D knee valgus measurement of the current study is fit for repeated measurements in clinical evaluation. The method of 2D testing used in this study is highly reliable and is therefore acceptable for assessing before and after provision of targeted intervention such as neuromuscular training and corrected cutting training.

Application of the findings to other sport tasks and to female athletes should be performed carefully. It would be interesting to perform a future study in which more participants are recruited to investigate limb dominance.

CONCLUSION

The current study demonstrated that concurrent validity of 2D and 3D knee valgus measurements is moderate-to-strong when considering 60° and 90° cutting maneuvers. Poor correlation was observed in 30° cutting maneuver. The 2D measurement of the FPPA demonstrated good-to-excellent intra-rater and excellent inter-rater reliabilities. This suggests that 2D knee valgus measurements could be used as an easy and inexpensive screening tool for injury risk identification and evaluation of change after targeted interventions such as neuromuscular training and corrected cutting training. In clinical application, knee valgus screening using 2D measurements for 60° and 90° cuttings could be performed and considered as a suitable assessment.

CONFLICT OF INTEREST

No conflict of interest

ACKNOWLEDGMENTS

All authors would like to thank all participants, and members of the Biomechanics and Sports Research unit, Faculty of Physical Therapy, Mahidol University, to support the study.

Submitted: July 06, 2021 CST, Accepted: November 22, 2021 CST



This is an open-access article distributed under the terms of the Creative Commons Attribution 4.0 International License (CCBY-NC-4.0). View this license's legal deed at <https://creativecommons.org/licenses/by-nc/4.0> and legal code at <https://creativecommons.org/licenses/by-nc/4.0/legalcode> for more information.

REFERENCES

1. Beynnon BD, Vacek PM, Newell MK, et al. The effects of level of competition, sport, and sex on the incidence of first-time noncontact anterior cruciate ligament injury. *Am J Sports Med*. 2014;42(8):1806-1812. doi:10.1177/0363546514540862
2. Joseph AM, Collins CL, Henke NM, Yard EE, Fields SK, Comstock RD. A Multisport epidemiologic comparison of anterior cruciate ligament injuries in high school athletics. *J Athl Train*. 2013;48(6):810-817. doi:10.4085/1062-6050-48.6.03
3. Whittaker JL, Woodhouse LJ, Nettel-Aguirre A, Emery CA. Outcomes associated with early post-traumatic osteoarthritis and other negative health consequences 3-10 years following knee joint injury in youth sport. *Osteoarthritis Cartilage*. 2015;23(7):1122-1129. doi:10.1016/j.joca.2015.02.021
4. Luc B, Gribble PA, Pietrosimone BG. Osteoarthritis prevalence following anterior cruciate ligament reconstruction: A systematic review and numbers-needed-to-treat analysis. *J Athl Train*. 2014;49(6):806-819. doi:10.4085/1062-6050-49.3.35
5. Ardern CL, Taylor NF, Feller JA, Webster KE. A systematic review of the psychological factors associated with returning to sport following injury. *Br J Sports Med*. 2013;47(17):1120-1126. doi:10.1136/bjsports-2012-091203
6. Simon D, Mascarenhas R, Saltzman BM, Rollins M, Bach BR, MacDonald P. The relationship between anterior cruciate ligament injury and osteoarthritis of the knee. *Adv Orthop*. 2015;2015:928301. doi:10.1155/2015/928301
7. Hewett TE, Myer GD, Ford KR, Paterno MV, Quatman CE. Mechanisms, prediction, and prevention of ACL injuries: cut risk with three sharpened and validated tools. *J Orthop Res*. 2016;34(11):1843-1855.
8. David S, Komnik I, Peters M, Funken J, Potthast W. Identification and risk estimation of movement strategies during cutting maneuvers. *J Sci Med Sport*. 2017;20(12):1075-1080. doi:10.1016/j.jsams.2017.05.011
9. Shin CS, Chaudhari AM, Andriacchi TP. Valgus plus internal rotation moments increase anterior cruciate ligament strain more than either alone. *Med Sci Sports Exerc*. 2011;43(8):1484-1491. doi:10.1249/MS.S.0b013e31820f8395
10. Ali N, Rouhi G. Barriers to predicting the mechanisms and risk factors of non-contact anterior cruciate ligament injury. *Open Biomed Eng J*. 2010;4:178. doi:10.2174/1874120701004010178
11. Pfeifer CE, Beattie PF, Sacko RS, Hand A. Risk factors associated with non-contact anterior cruciate ligament injury: A systematic review. *Int J Sports Phys Ther*. 2018;13(4):575.
12. Carlson VR, Sheehan FT, Boden BP. Video analysis of anterior cruciate ligament (ACL) injuries. *JBJS Rev*. 2016;4(11):e5. doi:10.2106/JBJS.RVW.15.00116
13. Almangoush A, Herrington L, Jones R. A preliminary reliability study of a qualitative scoring system of limb alignment during single leg squat. *Phys Ther Rehabil*. 2014;1(1):2.
14. Padua DA, Marshall SW, Boling MC, Thigpen CA, Garrett WE, Beutler AI. The Landing Error Scoring System (LESS) is a valid and reliable clinical assessment tool of jump-landing biomechanics: The JUMP-ACL study. *Am J Sports Med*. 2009;37(10):1996-2002. doi:10.1177/0363546509343200
15. Della Villa F, Buckthorpe M, Grassi A, et al. Systematic video analysis of ACL injuries in professional male football (soccer): injury mechanisms, situational patterns and biomechanics study on 134 consecutive cases. *Br J Sports Med*. 2020;54(23):1423-1432. doi:10.1136/bjsports-2019-101247
16. Hanzlíková I, Richards J, Athens J, Hébert-Losier K. The influence of asymptomatic hypermobility on unanticipated cutting biomechanics. *Sports Health*. 2021;13(6):548-553. doi:10.1177/1941738121999063
17. Hanzlíková I, Richards J, Athens J, Hébert-Losier K. Which jump-landing task best represents lower extremity and trunk kinematics of unanticipated cutting maneuver? *Gait Posture*. 2021;85:171-177. doi:10.1016/j.gaitpost.2021.02.003
18. Munro A, Herrington L, Carolan M. Reliability of 2-dimensional video assessment of frontal-plane dynamic knee valgus during common athletic screening tasks. *J Sport Rehabil*. 2012;21(1):7-11. doi:10.1123/jsr.21.1.7
19. Olson TJ, Chebny C, Willson JD, Kernozek TW, Straker JS. Comparison of 2D and 3D kinematic changes during a single leg step down following neuromuscular training. *Phys Ther Sport*. 2011;12(2):93-99. doi:10.1016/j.ptsp.2010.10.002

20. Maykut JN, Taylor - Haas JA, Paterno MV, DiCesare CA, Ford KR. Concurrent validity and reliability of 2D kinematics analysis of frontal plane motion during running. *Int J Sports Phys Ther*. 2015;10(2):136-146.
21. Pusara A, Heamawatanachai S, Sinsurin K, Jorakate C. Reliability of a low-cost webcam recording system for three-dimensional lower limb gait analysis. *Int Biomech*. 6(1):85-92. [doi:10.1080/23355432.2019.1671221](https://doi.org/10.1080/23355432.2019.1671221)
22. Ugbohue UC, Papi E, Kaliarntas KT, et al. The evaluation of an inexpensive, 2D, video based gait assessment system for clinical use. *Gait Posture*. 2013;38(3):483-489. [doi:10.1016/j.gaitpost.2013.01.018](https://doi.org/10.1016/j.gaitpost.2013.01.018)
23. Della Villa F, Di Paolo S, Santagati D, et al. A 2D video-analysis scoring system of 90° change of direction technique identifies football players with high knee abduction moment. *Knee Surg Sports Traumatol Arthrosc*. Published online April 29, 2021. [doi:10.1007/s00167-021-06571-2](https://doi.org/10.1007/s00167-021-06571-2)
24. Dos'Santos T, Thomas C, Comfort P, Jones PA. The effect of angle and velocity on change of direction biomechanics: An angle-velocity trade-Off. *Sports Med*. 2018;48(10):2235-2253. [doi:10.1007/s40279-018-0968-3](https://doi.org/10.1007/s40279-018-0968-3)
25. Schreurs MJ, Benjaminse A, Lemmink KAPM. Sharper angle, higher risk? the effect of cutting angle on knee mechanics in invasion sport athletes. *J Biomech*. 2017;63:144-150. [doi:10.1016/j.jbiomech.2017.08.019](https://doi.org/10.1016/j.jbiomech.2017.08.019)
26. Havens KL, Sigward SM. Joint and segmental mechanics differ between cutting maneuvers in skilled athletes. *Gait Posture*. 2015;41(1):33-38. [doi:10.1016/j.gaitpost.2014.08.005](https://doi.org/10.1016/j.gaitpost.2014.08.005)
27. Sinclair J, Taylor PJ, Hobbs SJ. Digital filtering of three-dimensional lower extremity kinematics: an assessment. *J Hum Kinet*. 2013;39:25-36. [doi:10.2478/hukin-2013-0065](https://doi.org/10.2478/hukin-2013-0065)
28. Yu B, Gabriel D, Noble L, An KN. Estimate of the optimum cutoff frequency for the Butterworth low-pass digital filter. *J Appl Biomech*. 1999;15(3):318-329. [doi:10.1123/jab.15.3.318](https://doi.org/10.1123/jab.15.3.318)
29. Bell AL, Pedersen DR, Brand RA. A comparison of the accuracy of several hip center location prediction methods. *J Biomech*. 1990;23(6):617-621. [doi:10.1016/0021-9290\(90\)90054-7](https://doi.org/10.1016/0021-9290(90)90054-7)
30. Portney LG, Watkins MP. *Foundations of Clinical Research: Applications to Practice*. Pearson/Prentice Hall; 2015.
31. Koo TK, Li MY. A Guideline of selecting and reporting intraclass correlation coefficients for reliability research. *J Chiropr Med*. 2016;15(2):155-163. [doi:10.1016/j.jcm.2016.02.012](https://doi.org/10.1016/j.jcm.2016.02.012)
32. Havens KL, Sigward SM. Whole body mechanics differ among running and cutting maneuvers in skilled athletes. *Gait Posture*. 2015;42(3):240-245. [doi:10.1016/j.gaitpost.2014.07.022](https://doi.org/10.1016/j.gaitpost.2014.07.022)
33. McLean SG. Evaluation of a two dimensional analysis method as a screening and evaluation tool for anterior cruciate ligament injury. *Br J Sports Med*. 2005;39(6):355-362. [doi:10.1136/bjsm.2005.018598](https://doi.org/10.1136/bjsm.2005.018598)
34. Schurr SA, Marshall AN, Resch JE, Saliba SA. Two-dimensional video analysis is comparable to 3D motion capture in lower extremity movement assessment. *Int J Sports Phys Ther*. 2017;12(2):163.
35. Lopes TJA, Ferrari D, Ioannidis J, Simic M, Mícolis de Azevedo F, Pappas E. Reliability and validity of frontal plane kinematics of the trunk and lower extremity measured with 2-dimensional cameras during athletic tasks: A systematic review with meta-analysis. *J Orthop Sports Phys Ther*. 2018;48(10):812-822. [doi:10.2519/jospt.2018.8006](https://doi.org/10.2519/jospt.2018.8006)