

Central Lancashire Online Knowledge (CLoK)

Title	Shape of LOSVDs in Barred Disks: Implications for Future IFU Surveys
Type	Article
URL	https://clock.uclan.ac.uk/22893/
DOI	https://doi.org/10.3847/1538-4357/aaa771
Date	2018
Citation	Zhao-Yu, Li, Shen, Juntai, Bureau, Martin, Zhou, Yingying, Du, Min and Debattista, Victor P (2018) Shape of LOSVDs in Barred Disks: Implications for Future IFU Surveys. The Astrophysical Journal, 854 (65). ISSN 0004-637X
Creators	Zhao-Yu, Li, Shen, Juntai, Bureau, Martin, Zhou, Yingying, Du, Min and Debattista, Victor P

It is advisable to refer to the publisher's version if you intend to cite from the work.
<https://doi.org/10.3847/1538-4357/aaa771>

For information about Research at UCLan please go to <http://www.uclan.ac.uk/research/>

All outputs in CLoK are protected by Intellectual Property Rights law, including Copyright law. Copyright, IPR and Moral Rights for the works on this site are retained by the individual authors and/or other copyright owners. Terms and conditions for use of this material are defined in the <http://clock.uclan.ac.uk/policies/>



Shape of LOSVDs in Barred Disks: Implications for Future IFU Surveys

Zhao-Yu Li^{1,2,7}, Juntai Shen^{1,2,8}, Martin Bureau³, Yingying Zhou^{1,2}, Min Du⁴, and Victor P. Debattista^{5,6}

¹Key Laboratory for Research in Galaxies and Cosmology, Shanghai Astronomical Observatory, Chinese Academy of Sciences, 80 Nandan Road, Shanghai 200030, People's Republic of China

²College of Astronomy and Space Sciences, University of Chinese Academy of Sciences, 19A Yuquan Road, Beijing 100049, People's Republic of China

³Sub-department of Astrophysics, Department of Physics, University of Oxford, Denys Wilkinson Building, Keble Road, Oxford OX1 3RH, UK

⁴Kavli Institute for Astronomy and Astrophysics, Peking University, Beijing 100871, People's Republic of China

⁵Jeremiah Horrocks Institute, University of Central Lancashire, Preston, PR1 2HE, UK

⁶Center for Theoretical Astrophysics and Cosmology, Institute for Computational Science, University of Zürich, Winterthurerstrasse 190, CH-8057 Zürich, Switzerland; jshen@shao.ac.cn, lizy@shao.ac.cn

Received 2017 October 16; revised 2018 January 7; accepted 2018 January 12; published 2018 February 13

Abstract

The shape of line-of-sight velocity distributions (LOSVDs) carries important information about the internal dynamics of galaxies. The skewness of LOSVDs represents their asymmetric deviation from a Gaussian profile. Correlations between the skewness parameter (h_3) and the mean velocity (\bar{V}) of a Gauss–Hermite series reflect the underlying stellar orbital configurations of different morphological components. Using two self-consistent N -body simulations of disk galaxies with different bar strengths, we investigate $h_3 - \bar{V}$ correlations at different inclination angles. Similar to previous studies, we find anticorrelations in the disk area, and positive correlations in the bar area when viewed edge-on. However, at intermediate inclinations, the outer parts of bars exhibit anticorrelations, while the core areas dominated by the boxy/peanut-shaped (B/PS) bulges still maintain weak positive correlations. When viewed edge-on, particles in the foreground/background disk (the wing region) in the bar area constitute the main velocity peak, whereas the particles in the bar contribute to the high-velocity tail, generating the $h_3 - \bar{V}$ correlation. If we remove the wing particles, the LOSVDs of the particles in the outer part of the bar only exhibit a low-velocity tail, resulting in a negative $h_3 - \bar{V}$ correlation, whereas the core areas in the central region still show weakly positive correlations. We discuss implications for IFU observations on bars, and show that the variation of the $h_3 - \bar{V}$ correlation in the disk galaxy may be used as a kinematic indicator of the bar and the B/PS bulge.

Key words: galaxies: bulges – galaxies: kinematics and dynamics – galaxies: spiral – galaxies: structure

1. Introduction

Kinematic information is essential to understand disk secular evolution. It encapsulates the potential, angular momentum, and underlying stellar orbits of the disk and bar, if present. Measurement of the disk kinematics can reveal the disk formation history, the bar, and spiral arm growths and evolutions, and allow us to estimate the dynamical mass of the whole disk.

Integral-field unit (IFU) spectroscopic observations of nearby disk galaxies provide 2D spatially resolved spectral information, whereby important kinematic properties can be measured. They are a powerful tool to investigate bar kinematics (e.g., Cappellari et al. 2007; Krajnović et al. 2011). IFU surveys such as ATLAS^{3D} (Cappellari et al. 2011), CALIFA (Sánchez et al. 2012; García-Benito et al. 2015), SLUGGS (Brodie et al. 2012, 2014), SAMI (Croom et al. 2012; Bryant et al. 2015), MaNGA (Bundy et al. 2015), and MUSE (Bacon et al. 2010) have led to significant progress in our understanding of disk galaxy formation and evolution.

The shape of line-of-sight velocity distributions (LOSVDs) can be described by the Gauss–Hermite series. Key kinematic information includes the mean velocity (\bar{V}), velocity dispersion (σ_{los}), and the third and fourth Gauss–Hermite coefficients h_3 and h_4 , describing the asymmetric (“skewness”) and symmetric (“kurtosis”) deviations from a Gaussian profile, respectively (Gerhard 1993; van der Marel & Franx 1993; Bender et al. 1994). Positive h_3 indicates a high-velocity tail, and

negative h_3 a low-velocity tail. For h_4 , a positive value indicates a sharp central peak, and a negative value results from a flat-top profile. Correlations between h_3 and the mean line-of-sight (LOS) velocity \bar{V} reflect the underlying stellar orbits.

Commonly seen in disk galaxies, bars play important roles in their secular evolution (e.g., Kormendy & Kennicutt 2004). Bureau & Athanassoula (2005) used N -body simulations to confirm the negative $h_3 - \bar{V}$ correlation (i.e., anticorrelation) observed in edge-on disks and the positive correlation observed in bars, as reported in previous long-slit observations of edge-on galaxies (e.g., Fisher 1997; Chung & Bureau 2004) and the theoretical orbital analysis by Bureau & Athanassoula (1999). They suggested that LOSVDs with a high-velocity tail (positive $h_3 - \bar{V}$ correlation) may be tracers of bars (also see Molaeinezhad et al. 2016). Debattista et al. (2005) also suggested that when viewed face-on, boxy/peanut-shaped (B/PS) bulges tend to show h_4 values in the inner regions that are smaller than elsewhere (also see Iannuzzi & Athanassoula 2015). In doubly barred disks, Du et al. (2016) found peaks in the LOS velocity dispersion σ_{los} near the inner bars, and $h_3 - \bar{V}$ anticorrelations in the inner bars for certain orientations. These Gauss–Hermite coefficients relations are important indices that can be used to understand bar kinematics and evolution when compared to IFU observations.

To understand the $h_3 - \bar{V}$ (anti-)correlations, and the reasons behind those correlations, we carry out a study based on two self-consistent N -body simulations of disk galaxies with different bar strengths. We also investigate the inclination angle (and bar viewing angle) dependence of key kinematic features, especially in the B/PS bulge regions.

⁷ LAMOST Fellow.

⁸ Newton Advanced Fellow of the Royal Society.

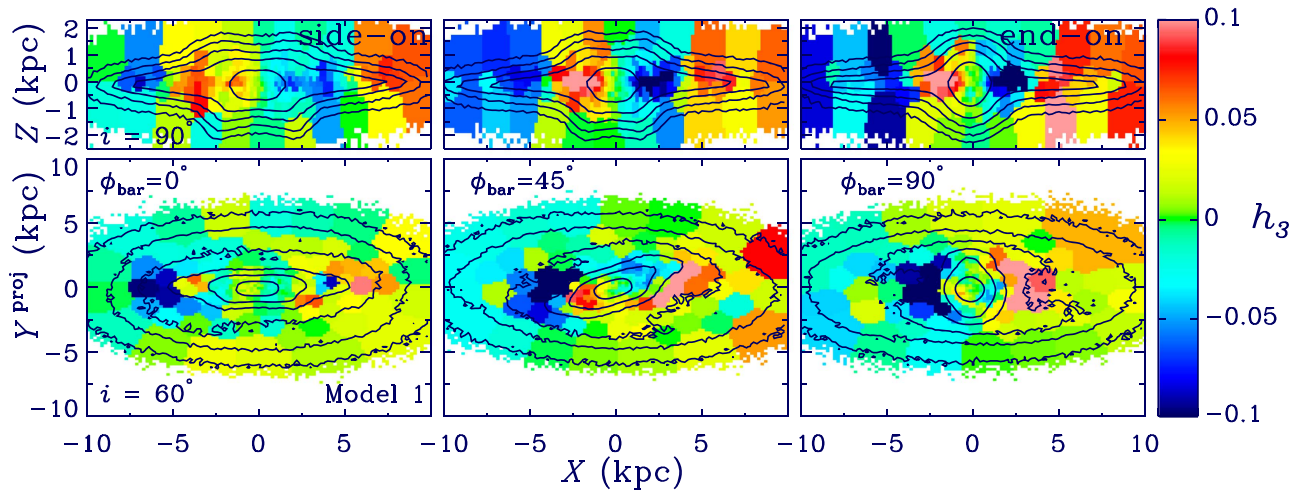


Figure 1. h_3 maps of Model 1 viewed edge-on ($i = 90^\circ$, top row) and partially inclined ($i = 60^\circ$, bottom row), with different bar viewing angles ($\phi_{\text{bar}} = 0^\circ, 45^\circ$, and 90° in the first, second, and third column, respectively). The disks rotate clockwise as seen from $Z > 0$, i.e., positive (receding) at $X < 0$ and vice versa. The projected density contours are overlaid on the maps. As the inclination decreases, the $h_3 - \bar{V}$ correlations in the outer part of the bar area change from positive to negative, while the core area dominated by the B/PS bulge still maintains weak positive $h_3 - \bar{V}$ correlations. The anticorrelations persist in the disks (with smaller h_3 amplitudes) as the inclination decreases.

The paper is organized as follows. Section 2 describes the two simulations. The results and corresponding discussion are presented in Sections 3 and 4, respectively. Key results are summarized in Section 5.

2. Simulations

Two disk galaxy N -body simulations with different bar amplitudes are analyzed here. Face-on and edge-on projections of the two models are shown in the top and middle panels of Figure 1 in Li & Shen (2015). Compared to Model 2, the bar in Model 1 is longer and stronger; it has experienced higher buckling instability, resulting in a more prominent B/PS bulge (Combes & Sanders 1981; Raha et al. 1991). Initially, the two models were featureless exponential disks. In Model 1, two million disk particles evolve in a live dark matter halo, consisting of 2.5 million particles with a compressed King profile ($\Psi(0)/\sigma^2 = 3$ and $r_c = 10R_d$; see Sellwood & McGaugh 2005 for details of the adiabatic compression). Model 2 was shown to reproduce well the photometric and kinematic properties of the Galactic bulge in Shen et al. (2010). It consists of one million disk particles rotating in a rigid dark matter halo potential. Bars in both models grow quickly to form an inner B/PS bulge. In previous studies, the two models (especially Model 2) have been used extensively to understand the structure and kinematic properties of the Galactic bulge and disk (e.g., Shen et al. 2010; Li & Shen 2012, 2015; Li et al. 2014; Molloy et al. 2015a, 2015b; Nataf et al. 2015; Qin et al. 2015).

To understand the inclination dependence of key kinematic properties, the two models are projected with moderate and edge-on inclination angles ($i = 60^\circ, 90^\circ$) and different bar viewing angles ($\phi_{\text{bar}} = 0^\circ, 45^\circ, 90^\circ$).⁹ ϕ_{bar} is the angle between the major axis of the bar and the major axis of the inclined disk ($\phi_{\text{bar}} = 0^\circ$ is thus a side-on bar and $\phi_{\text{bar}} = 90^\circ$ an end-on bar). To calculate \bar{V} , σ_{los} , h_3 , and h_4 , we fit the Gauss–Hermite series

to the LOSVDs up to the fourth order.¹⁰ h_3 maps of the edge-on disks ($i = 90^\circ$) and moderately inclined disks ($i = 60^\circ$) in Models 1 and 2 are shown in Figures 1 and 2, respectively. We used the Voronoi binning method of Cappellari & Copin (2003; with S/N = 50). The disks in the two models rotate clockwise as seen from $Z > 0$, i.e., positive (receding) at $X < 0$ and vice versa.

3. Results

For Model 1, in the edge-on view (top row in Figure 1), inside the bar area ($|X| \lesssim 4$ kpc), h_3 and \bar{V} exhibit positive correlations, with larger h_3 values in the end-on cases ($\phi_{\text{bar}} = 90^\circ$; third column) than the side-on cases ($\phi_{\text{bar}} = 0^\circ$; first column). In the outer disks ($|X| \gtrsim 4$ kpc), h_3 generally anti-correlates with \bar{V} , as expected. These results are consistent with previous studies (Bureau & Athanassoula 2005) and the kinematics of the Milky Way bar/bulge (Zhou et al. 2017).

For moderately inclined disks ($i = 60^\circ$, bottom row of Figure 1), inside the outer parts of the bars, the $h_3 - \bar{V}$ correlations change drastically from positive to negative, whereas the core areas dominated by the B/PS bulges (within about half the bar length) still show weak positive correlations. This is most significant in the second and third columns for Model 1 ($\phi_{\text{bar}} = 45^\circ$ and 90°). This phenomenon was first noticed in Bureau & Athanassoula (2005) and confirmed in Iannuzzi & Athanassoula (2015). They found that the $h_3 - \bar{V}$ correlation in the bar region decreases as i decreases, and even becomes an anticorrelation for $i \lesssim 80^\circ$. This is consistent with our results, except for the core areas, which maintain positive $h_3 - \bar{V}$ correlations. From the top left panel in Figure 1, it seems that the isodensity contours of Model 1 in the edge-on view with a side-on bar are not symmetric with respect to the midplane. The buckling event may not be completely finished. We have performed a similar analysis in earlier snapshots of this simulation. The main results are unchanged.

⁹ Close to face-on ($i \lesssim 30^\circ$), LOS velocities are too small to show a clear h_3 pattern.

¹⁰ We also fit the Gauss–Hermite series up to the eighth order. The fourth-order and eighth-order fits yield consistent results, with the fifth and higher order coefficients being negligible.

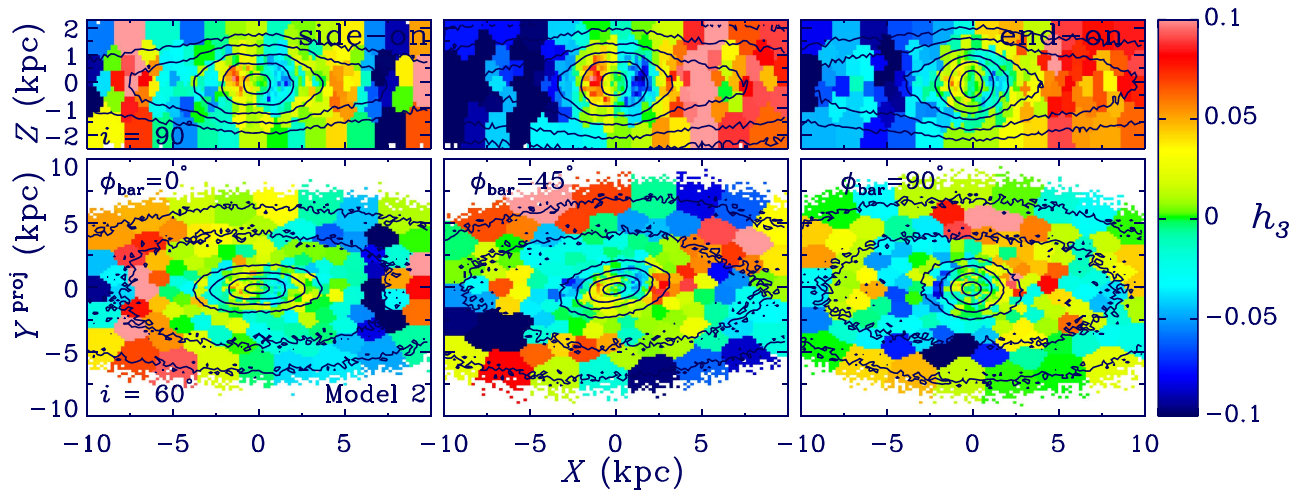


Figure 2. h_3 maps of Model 2 viewed edge-on ($i = 90^\circ$, top row) and partially inclined ($i = 60^\circ$, bottom row), with different bar viewing angles. The disks rotate clockwise as seen from $Z > 0$. The projected density contours are overlaid on the maps. Model 2 shows a similar h_3 pattern as in Model 1. Note that in the first column (Model 2 with $\phi_{\text{bar}} = 0^\circ$), there is a positive $h_3 - \bar{V}$ correlation in the outer disk along the bar major axis ($|X| \sim 8$ kpc), which may be due to the Outer Lindblad Resonance of the bar.

For Model 2, as shown in Figure 2, it exhibits a consistent h_3 pattern with Model 1 with smaller h_3 amplitude and weaker $h_3 - \bar{V}$ correlation. Note that in the first column of Figure 2, the disk area at $|X| \sim 8$ kpc shows a positive $h_3 - \bar{V}$ correlation along the major axis of the bar. This feature may be related to the Outer Lindblad Resonance (OLR) of the bar in Model 2. According to Binney & Tremaine (2008), we estimate the location of OLR of the two models by comparing the bar pattern speed (Ω_b) and the radial profiles of $\Omega_b + \kappa/2$. The location of OLR is ~ 14 kpc for Model 1 ($\Omega_b \approx 20 \text{ km s}^{-1} \text{ kpc}^{-1}$), and ~ 8 kpc for Model 2 ($\Omega_b \approx 40 \text{ km s}^{-1} \text{ kpc}^{-1}$). The bar rotates slower in Model 1, thus resulting in a larger OLR radius and the absence of this feature in the disk of Model 1.

We also examined h_4 maps of the two models. In the face-on views, the B/PS bulges show h_4 values that are smaller than elsewhere, in agreement with Debattista et al. (2005) and Iannuzzi & Athanassoula (2015).

4. Discussion

4.1. LOSVDs in Disk and Bar Areas

The most direct way to understand the $h_3 - \bar{V}$ correlations is by dissecting the LOSVDs themselves. We thus select typical fields in the disk and bar areas. For the edge-on and moderately inclined viewing angles, the selected disk areas are at $-7 < X < -6$ kpc, while the selected bar areas are at $-2.5 < X < -1.5$ kpc. The selected core areas are at $-1 < X < -0.5$ kpc. All three areas are restricted with $|Z| < 0.5$ kpc.

4.1.1. Edge-on Disks ($i = 90^\circ$)

Theoretically, for an axisymmetric edge-on disk, the main peak of the LOSVD at any given position is contributed by particles at the tangent point of nearly circular orbits, with a low-velocity tail from the projected stellar orbits away from (both in front and beyond) the tangent point (Bureau & Athanassoula 2005). This generates the usual $h_3 - \bar{V}$ anticorrelation.

The LOSVDs of the disk and bar areas in the edge-on view with an end-on bar are shown in Figure 3. As shown in the right panel, along each LOS, the particles are separated into

three subsamples according to the distance from the tangent point, representing a tangent region (green, < 1 kpc), an intermediate region (blue, $1-4$ kpc), and a wing region (red, > 4 kpc). The corresponding LOSVDs of the disk areas in the two models are shown in the first column with the same color scheme. As expected, the green histograms peak at the highest velocities, $\sim 170 \text{ km s}^{-1}$, while the blue and red histograms peak at lower velocities, ~ 160 and 100 km s^{-1} , respectively. This agrees with the theoretical expectations that the tangent points lead to the highest velocities, while the wing regions lead to low velocities. For the total LOSVDs, the low-velocity tails are mainly contributed by the red histograms. The combined effect is the usual $h_3 - \bar{V}$ anticorrelation.

The three-dimensional orbital configuration of bars has been extensively studied in the literature (Pfenniger 1984; Pfenniger & Friedli 1991; Patsis et al. 2002, 2003; Skokos et al. 2002a, 2002b). Inside the bar, the main orbit families of N -body simulations can be regarded as three-dimensional generalizations of the main two-dimensional orbit family, i.e., the x_1 family corresponding to orbits elongated parallel to the bar (Bureau & Athanassoula 2005). The x_1 orbits lead to higher LOS velocities than the outer orbits in the end-on bar view, and much lower velocities in the side-on bar view (Bureau & Athanassoula 1999). As the viewing angle to the bar approaches end-on, the velocity distribution from the elongated orbits in the bar shifts toward velocities higher than those of circular orbits. Considering the low-velocity contributions from quasi-circular (foreground and background) projected disk orbits surrounding the bar, the combined effect is a high-velocity tail, i.e., an unusual positive $h_3 - \bar{V}$ correlation.

For our two models, the velocity distributions in the bar field are shown in the second column of Figure 3. Clearly, the green histograms show much larger peak velocities ($\sim 200 \text{ km s}^{-1}$) than those of the blue histograms (intermediate regions). The red histograms (wing regions) show the lowest peak velocities ($\sim 50 \text{ km s}^{-1}$). This is fully consistent with the theoretical expectations of the x_1 orbit family. However, in the bar areas, both the green and blue histograms show low-velocity tails, i.e., large negative h_3 values (when considered independently). This is more significant in Model 1, with a strongly buckled bar ($h_3^{\text{tangent}} = -0.462$). The LOSVDs inside the bar areas show

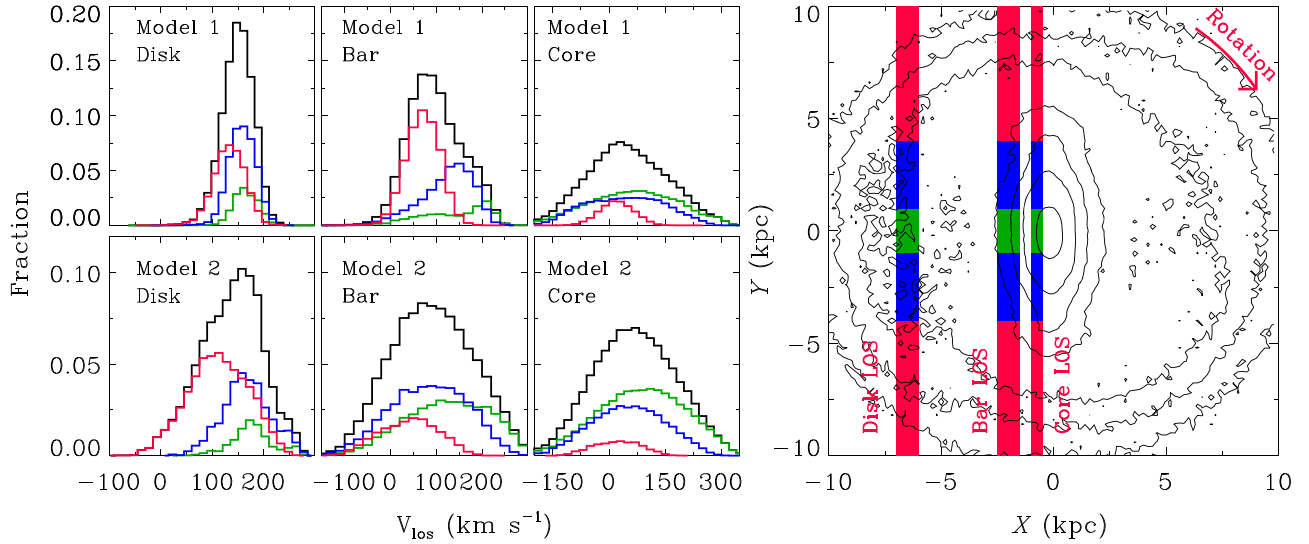


Figure 3. LOSVDs in the disk and bar areas of the two models viewed edge-on ($i = 90^\circ$) with an end-on bar ($\phi_{\text{bar}} = 90^\circ$). The black histograms are the combined LOSVDs of all particles in the three areas. The green, blue, and red histograms represent the tangent, intermediate, and wing particles (foreground and background), respectively. The right panel sketches the three lines of sight in the disk, bar, and core areas, and the choice of the tangent, intermediate, and wing regions on top of the isodensity contours of Model 1. The disks rotate clockwise. In the disk areas, the wing particles lead to the low-velocity tails of the LOSVDs, producing characteristic negative $h_3 - \bar{V}$ correlations. In the bar area, the tangent particles lead to high-velocity tails and thus positive $h_3 - \bar{V}$ correlations.

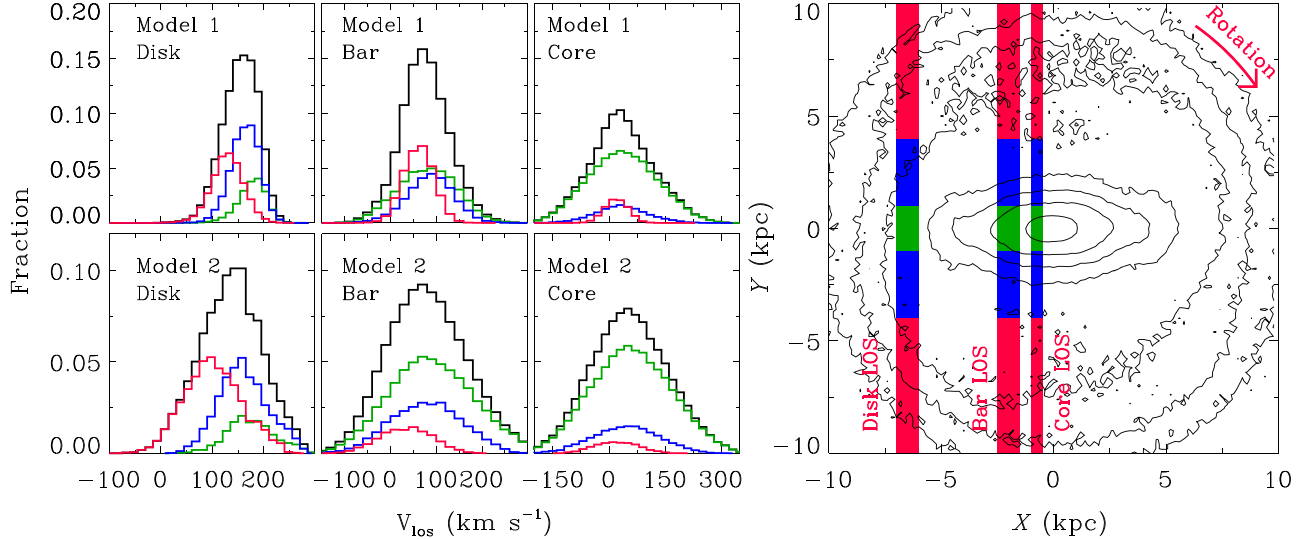


Figure 4. LOSVDs in the disk and bar areas of the two models viewed edge-on ($i = 90^\circ$) with a side-on bar ($\phi_{\text{bar}} = 0^\circ$). The layout of this figure is the same as that of Figure 3. LOSVDs in the bar regions are more symmetric than Figure 3.

low-velocity tails and large dispersion. The x_1 orbits seem unlikely to contribute to such low-velocity tails. Other orbital families are needed to explain this feature.

As shown in the third column of Figure 3, the core areas have large velocity dispersions. The green histograms' peak velocities are slightly higher than those of the blue histograms'. The LOSVDs in tangent and intermediate regions are quite symmetric, with small h_3 values. The total LOSVDs show weak positive $h_3 - \bar{V}$ correlations.

We also study the LOSVDs in the bar and disk areas in the edge-on disk with a side-on bar. The results are shown in Figure 4. In the bar area, the LOSVDs become much broader than the end-on case, resulting in a much weaker h_3 amplitude and $h_3 - \bar{V}$ correlation.

Figure 5 shows the face-on view of the h_3 maps of V_Y for the two models in different bar angles. V_Y actually represents the LOS velocity in the edge-on view with the observer in the X - Y

plane and the corresponding LOS perpendicular to the X -axis. This provides a clear visualization of the spatial distribution of h_3 values in different regions of the galaxy. The disks rotate clockwise. In the bar region, the outer part exhibits clear anticorrelation with \bar{V} . This is consistent with Figures 3 and 4. The disk of Model 2 at $|R| \sim 8$ kpc shows positive $h_3 - \bar{V}$ correlation, probably due to the influence of OLR.

4.1.2. Moderately Inclined Disks ($i = 60^\circ$)

At slightly smaller inclination angles ($i = 60^\circ$), $h_3 - \bar{V}$ correlations change dramatically. As shown in Figures 1 and 2, h_3 values in the disk area decrease at smaller inclinations, while inside the bar areas, especially in the end-on cases, the $h_3 - \bar{V}$ correlations change from positive to negative in the outer parts of the bars. The core areas maintain weak positive correlations.

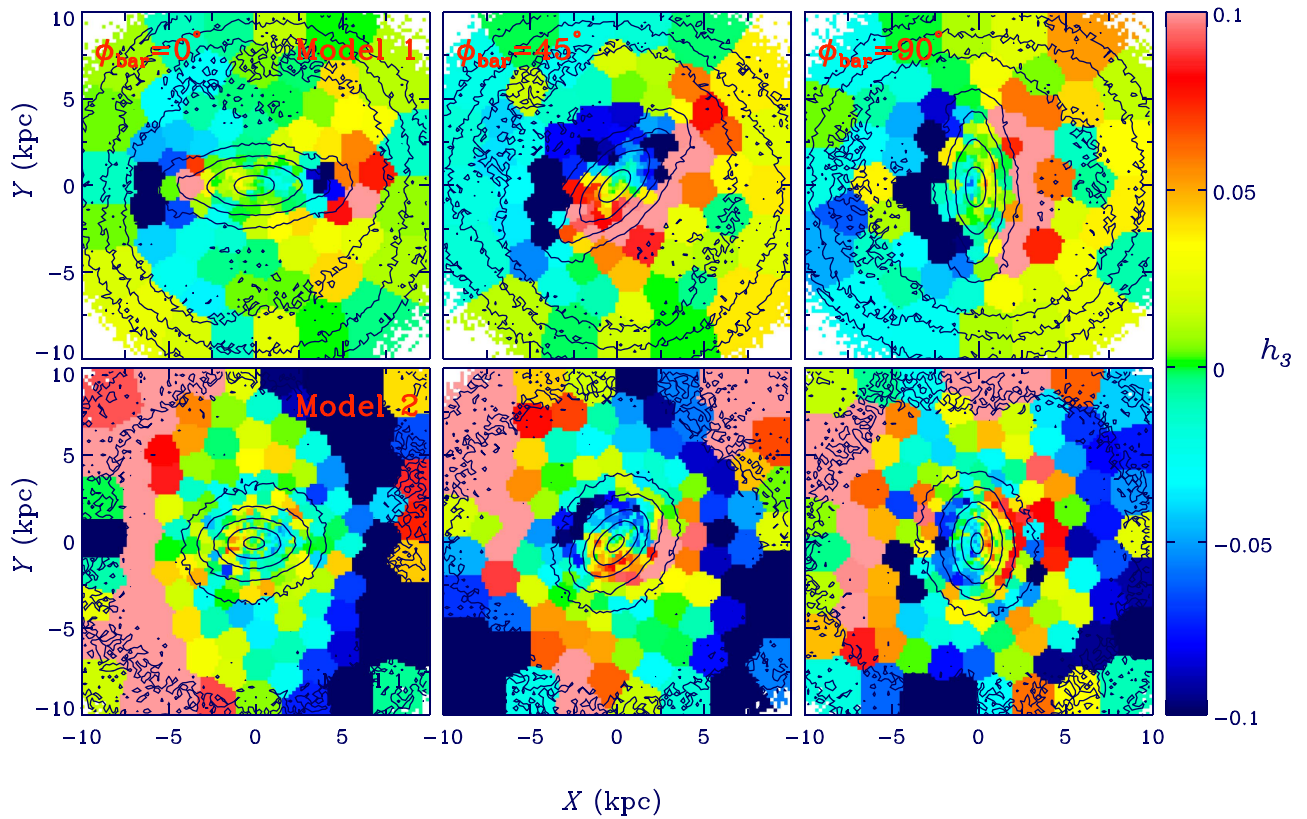


Figure 5. h_3 maps of Model 1 (top row) and Model 2 (bottom row) viewed face-on with different bar angles (from left to right, $\phi_{\text{bar}} = 0^\circ, 45^\circ$, and 90°). h_3 here is derived from V_Y , which represents the LOS velocity in the edge-on view with the observer in the X - Y plane and the LOS perpendicular to the X -axis. The disk rotates clockwise. In the outer part of the bar, h_3 displays anticorrelation with \bar{V}_Y , consistent with the analysis in Figures 3 and 4.

For lines of sight through the disks at $i = 60^\circ$ with an end-on bar, as shown in the top panel of Figure 6, the depths along the lines of sight (8 kpc) are roughly twice the vertical thickness of the disks (4 kpc).¹¹ For planar orbits, a 60° inclination will cause a 13% reduction of \bar{V} . The velocity distributions will thus shift to slightly lower velocities and become narrower. We again divide the particles into two groups, i.e., the tangent region (green) and an intermediate region (blue). Due to the smaller depths along the lines of sight, we cannot define a wing region $\gtrsim 4$ kpc away from the tangent point, as before.

For the disk areas, as shown in the left column of Figure 6, the green histograms peak at $\sim 160 \text{ km s}^{-1}$, the blue ones at $\sim 140 \text{ km s}^{-1}$. The h_3 values are very small for the combined histograms, due to the lack of low-velocity contributions from the wing regions as in the edge-on cases.

In the outer part of the bar, in the middle column of Figure 6, both the green and blue histograms show clearly skewed distributions with low-velocity tails. Here, in the moderately inclined cases, the lines of sight do not go through the outer disk areas. Without the low LOS velocity contributions from the outer disks, the bars themselves display the unusual $h_3 - \bar{V}$ anticorrelations. The velocity distribution of the tangent region (green histogram) in Model 1 seems to be composed of two components, i.e., a narrow peak $\sim 170 \text{ km s}^{-1}$ and a broad peak $\sim 50 \text{ km s}^{-1}$. A similar feature can also be seen in the green histogram (tangent region) in the top middle panel of Figure 3

for the bar area. The high-velocity narrow peak is probably related to the x_1 orbits, while the broad low-velocity peak may be due to other orbital families in the bar.

In the core area, as shown in the right column of Figure 6, the LOSVDs of the tangent and intermediate regions have large velocity dispersions and small h_3 values. The weak positive $h_3 - \bar{V}$ correlations at a 60° inclination in the core area are consistent with the edge-on cases, where the LOSVDs are dominated by the tangent and intermediate regions.

We also tried considering only the bar particles in the simulations. Regardless of the inclination angles, there are positive and negative $h_3 - \bar{V}$ correlations in the core and outer bar areas, respectively, consistent with the previous argument.

In this work, we found similar phenomena as Iannuzzi & Athanassoula (2015), but we strive to understand the reason behind this. Along each LOS, by dissecting the particles into tangent, intermediate, and wing regions, we investigate the shape of the LOSVDs causing the correlation. For the bar area, the dependence of the $h_3 - \bar{V}$ correlation on the inclination angle is also explained with the combination of the LOSVDs from the tangent, intermediate, and/or wing regions.

4.2. Comparison with IFU Observations of nearby Galaxies

A direct comparison between our simulation predictions and the IFU observations is not straightforward. h_3 derived from the observed spectra is sensitive to dust extinction correction and has large fluctuations (Seidel et al. 2015). Moreover, bars are often accompanied with nuclear disks, nuclear bars, or pseudobulges that may affect the $h_3 - \bar{V}$ correlation in the core region.

¹¹ The top panel shows the isodensity contours in the $Y - Z$ plane. Therefore, the bar is the side-on view. The selected disk, bar, and core areas have different X ranges, but the same Y and Z ranges. The red dashed line represents the projected LOS of the disk, bar, and core areas.

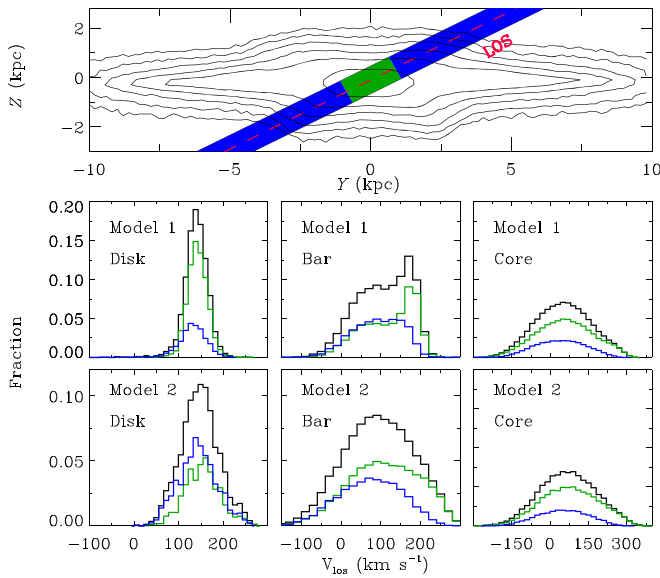


Figure 6. LOSVDs in the disk and bar areas of the two models viewed at a 60° inclination with an end-on bar ($\phi_{\text{bar}} = 90^\circ$). The top panel shows the LOS through the isodensity contours of Model 1 in the edge-on view with a side-on bar, with green and blue regions representing the tangent and intermediate regions, respectively. The black histograms are the combined LOSVDs of all particles in the three areas. The green and blue histograms represent the tangent and intermediate region particles, respectively. The disk areas now have very small h_3 values, i.e., symmetric LOSVDs, due to the lack of particles in the wing region. The LOSVDs in the bar areas show prominent low-velocity tails, and thus the unusual $h_3 - \bar{V}$ anticorrelations. In the core area, the total LOSVDs maintain a positive $h_3 - \bar{V}$ correlation.

Our pure bar models at moderate inclinations ($i \sim 60^\circ$) predict a positive $h_3 - \bar{V}$ correlation in the core and an anticorrelation in the outer part of the bar. In the edge-on view, the simulations exhibit a positive $h_3 - \bar{V}$ correlation in the bar region. According to previous simulations (Bureau & Athanassoula 2005; Iannuzzi & Athanassoula 2015), the $h_3 - \bar{V}$ signature is strongest with relatively large inclination angles ($i \gtrsim 40^\circ$) and bar viewing angles ($\phi_{\text{bar}} \gtrsim 40^\circ$). Seidel et al. (2015) studied 2D kinematics of 16 barred galaxies observed with SAURON IFU. Unfortunately, only two galaxies have relatively large inclination angles ($\sim 60^\circ$) and large ϕ_{bar} , i.e., NGC 2543 and NGC 5350. For the two galaxies, we do see $h_3 - \bar{V}$ anticorrelations in the outer part of the bar, consistent with our predictions for the bar kinematics at moderate inclination angles. A similar $h_3 - \bar{V}$ anticorrelation in the bar region was reported in Saburova et al. (2017) with long-slit observations of UGC 1344.

If the isodensity contours are more peanut-like, with weak h_3 values, then the bar is probably aligned with the projected major axis of the disk, i.e., $\phi_{\text{bar}} = 0^\circ$. If the isodensity contours are more spheroidal with strong positive correlations between h_3 and \bar{V} , ϕ_{bar} is close to 90° . Recently, Opitsch et al. (2017) mapped the kinematics of the M31 bulge region, and found a positive $h_3 - \bar{V}$ correlation. Considering the relatively large inclination angle of M31 (close to edge-on), this positive correlation and the lack of clear B/PS isophotes probably imply the existence of an end-on bar in M31, which also consistent with our predictions.

Our simulations do not include nuclear substructures in the central region of the bar. For real galaxies, additional substructures, e.g., nuclear disk, secondary bars, or pseudo-bulges (Kormendy & Kennicutt 2004), could overwhelm the

weak $h_3 - \bar{V}$ correlation predicted by our models. In fact, Seidel et al. (2015) detected $h_3 - \bar{V}$ anticorrelations in the core regions in half of their sample. The detected anticorrelation probably hints for a kinematically decoupled substructure, since a pure bar model predicts weak positive correlations in the core region. In the future, we will make more tests with more sophisticated simulations including the later formation of nuclear substructures (e.g., Cole et al. 2014).

4.3. Bars and B/PS Bulge Identification

In edge-on galaxies, the disks generally show $h_3 - \bar{V}$ anticorrelations, while the bars display positive correlations. Therefore, based on the area showing a positive $h_3 - \bar{V}$ correlation in long-slit or IFU observations, the bar existence may be revealed. The bar roughly corresponds to the region with a positive $h_3 - \bar{V}$ correlation. In addition, the h_3 amplitude depends on the viewing angle of the bar. An end-on bar usually shows larger h_3 values than a side-on bar.

In a moderately inclined disk, the bar can be directly measured from the image at small ϕ_{bar} . When ϕ_{bar} is close to 90° , a bar may be difficult to identify. In this case, negative $h_3 - \bar{V}$ correlations in the inner region of the disk can help to confirm the existence of a bar.

Recent observational studies have identified B/PS bulges in local disk galaxies (Erwin & Debattista 2017; Li et al. 2017). From our results, for a barred galaxy with B/PS bulge in moderate inclinations, without the presence of nuclear substructures, the core area could be identified by the central positive $h_3 - \bar{V}$ correlation, with the outer part of the bar showing negative $h_3 - \bar{V}$ correlation. This feature is different from results of the pure bar models without B/PS bulges. Iannuzzi & Athanassoula (2015) investigated the individual contribution of bars and B/PS bulges on the observed kinematics by comparing a simulation in pre- and post-B/PS formation. They found quite significant differences in velocity dispersion, h_3 and h_4 maps, with B/PS bulges showing strong h_3 and h_4 features off the kinematic-major axis. The in-plane values are also boosted with B/PS bulge. At smaller inclination angles, the simulations without B/PS bulges show negative $h_3 - \bar{V}$ correlation in the bar and the core regions. We performed a similar analysis by analyzing the snapshots of our models with pre- and post-B/PS formation. The results are consistent with Iannuzzi & Athanassoula (2015).

5. Summary

We use two N -body simulations of disk galaxies with different bar strengths to investigate their disk kinematics and dependence on inclination. For the disks viewed edge-on, we confirm the negative and positive $h_3 - \bar{V}$ correlations in the disk and bar areas, respectively. The h_3 amplitude is larger in bars viewed end-on than those viewed side-on. At 60° inclination, the h_3 amplitude in the disk areas is smaller, while in the bar areas, the $h_3 - \bar{V}$ correlations change from positive to negative in the outer parts of bars, and remain weakly positive in the core area dominated by the B/PS bulge.

To understand the origin of the $h_3 - \bar{V}$ correlation, we dissect the LOSVDs in the bar and disk areas at different inclination angles. In the edge-on views, for the disk areas, the tangent region of the underlying quasi-circular orbits along the LOS leads to the highest velocities, while the regions far from the tangent point mainly lead to a significant low-velocity

contribution. The combined distribution thus shows an $h_3 - \bar{V}$ anticorrelation. In the bar areas, the bar particles lead to velocities even higher than those of circular orbits, changing the combined LOSVD to one with a high-velocity tail, thus resulting in a positive $h_3 - \bar{V}$ correlation. These results are consistent with theoretical expectations. However, for bar particles only, the LOSVDs in the outer part of the bar show significant low-velocity tails, which seems unlikely to be contributed by x_1 orbits.

At a 60° inclination, the depths along the lines of sight decrease from ~ 20 to ~ 8 kpc. All velocities decrease by $\sim 13\%$ due to the projection effect. Because of the smaller depths along the lines of sight, there is no contribution from low-velocity disk particles surrounding the bars. Therefore, the total LOSVDs are mainly contributed to by the tangent and intermediate regions. In the disk areas, the LOSVDs are fairly symmetric with very small h_3 , while in the bar areas, the LOSVDs of the tangent and intermediate regions show negative $h_3 - \bar{V}$ correlations in the outer parts of the bars, and weak positive correlations in the core areas. This results in the observed contrasting behavior with respect to the edge-on cases, and is confirmed by a test using the bar particles, where both the edge-on and moderately inclined disks show anticorrelations between h_3 and \bar{V} in the outer parts of the bars, and weak positive correlations in the core areas.

We also compare with IFU observations and find our predictions to be roughly consistent with IFU and long-slit observations of nearby galaxies in the bar region, suggesting that the $h_3 - \bar{V}$ correlation could be a good indicator for the bar identification. For a disk viewed edge-on, the bar can be associated with the area showing a positive $h_3 - \bar{V}$ correlation. In moderately inclined disks, h_3 and \bar{V} are anti-correlated in the outer parts of the bars. In long-slit and IFU observations of moderately inclined disks, the anticorrelations seen in the bar areas are thus fully consistent with bar kinematics; there is no need for an additional disk to explain the anticorrelations.

From our results, we can see that the core region dominated by the B/PS bulge shows a positive $h_3 - \bar{V}$ correlation at a moderate inclination angle, whereas the outer parts of the bars show a negative $h_3 - \bar{V}$ correlation. This feature is absent for simulations without B/PS bulges that only show weak $h_3 - \bar{V}$ anticorrelations in the bar region. This drastic feature in the bar area can be used in B/PS bulge identification.

We thank the anonymous referee for constructive suggestions that helped to improve the paper. The research presented here is partially supported by the 973 Program of China under grant No. 2014CB845700, by the National Natural Science Foundation of China under grant Nos. 11773052, 11333003, 11761131016, and 11403072, and by a China–Chile joint grant from CASSACA. Z.Y.L. is supported by the Youth Innovation Promotion Association, Chinese Academy of Sciences. His LAMOST Fellowship is supported by Special Funding for Advanced Users, budgeted and administrated by Center for Astronomical Mega-Science, Chinese Academy of Sciences (CAMS). JS acknowledges support from an *Newton Advanced Fellowship* awarded by the Royal Society and the Newton Fund, and from the CAS/SAFEA International Partnership Program for Creative Research Teams. M.D. is supported by the “National Postdoctoral Program for Innovative Talents” grant from the China Postdoctoral Science Foundation. V.P.D. is supported by STFC consolidated grant #ST/M000877/1 and acknowledges the personal support of George Lake, and of the

Pauli Center for Theoretical Studies, which is supported by the Swiss National Science Foundation (SNF), the University of Zürich, and ETH Zürich during a sabbatical visit in 2017. This work made use of the facilities of the Center for High Performance Computing at the Shanghai Astronomical Observatory.

ORCID iDs

Zhao-Yu Li  <https://orcid.org/0000-0001-5017-7021>
 Juntai Shen  <https://orcid.org/0000-0001-5604-1643>
 Martin Bureau  <https://orcid.org/0000-0003-4980-1012>
 Yingying Zhou  <https://orcid.org/0000-0002-8030-4383>
 Min Du  <https://orcid.org/0000-0001-9953-0359>
 Victor P. Debattista  <https://orcid.org/0000-0001-7902-0116>

References

- Bacon, R., Accardo, M., Adjali, L., et al. 2010, *Proc. SPIE*, **7735**, 773508
 Bender, R., Saglia, R. P., & Gerhard, O. E. 1994, *MNRAS*, **269**, 785
 Binney, J., & Tremaine, S. 2008, *Galactic Dynamics* (2nd ed.; Princeton, NJ: Princeton Univ. Press)
 Brodie, J. P., Romanowsky, A. J., Strader, J., et al. 2014, *ApJ*, **796**, 52
 Brodie, J. P., Usher, C., Conroy, C., et al. 2012, *ApJL*, **759**, L33
 Bryant, J. J., Owers, M. S., Robotham, A. S. G., et al. 2015, *MNRAS*, **447**, 2857
 Bundy, K., Bershady, M. A., Law, D. R., et al. 2015, *ApJ*, **798**, 7
 Bureau, M., & Athanassoula, E. 1999, *ApJ*, **522**, 686
 Bureau, M., & Athanassoula, E. 2005, *ApJ*, **626**, 159
 Cappellari, M., & Copin, Y. 2003, *MNRAS*, **342**, 345
 Cappellari, M., Emsellem, E., Bacon, R., et al. 2007, *MNRAS*, **379**, 418
 Cappellari, M., Emsellem, E., Krajnović, D., et al. 2011, *MNRAS*, **413**, 813
 Chung, A., & Bureau, M. 2004, *AJ*, **127**, 3192
 Cole, D. R., Debattista, V. P., Erwin, P., Earp, S. W. F., & Roškar, R. 2014, *MNRAS*, **445**, 3352
 Combes, F., & Sanders, R. H. 1981, *A&A*, **96**, 164
 Croom, S. M., Lawrence, J. S., Bland-Hawthorn, J., et al. 2012, *MNRAS*, **421**, 872
 Debattista, V. P., Carollo, C. M., Mayer, L., & Moore, B. 2005, *ApJ*, **628**, 678
 Du, M., Debattista, V. P., Shen, J., & Cappellari, M. 2016, *ApJ*, **828**, 14
 Erwin, P., & Debattista, V. P. 2017, *MNRAS*, **468**, 2058
 Fisher, D. 1997, *AJ*, **113**, 950
 García-Benito, R., Zibetti, S., Sánchez, S. F., et al. 2015, *A&A*, **576**, A135
 Gerhard, O. E. 1993, *MNRAS*, **265**, 213
 Iannuzzi, F., & Athanassoula, E. 2015, *MNRAS*, **450**, 2514
 Kormendy, J., & Kennicutt, R. C., Jr. 2004, *ARA&A*, **42**, 603
 Krajnović, D., Emsellem, E., Cappellari, M., et al. 2011, *MNRAS*, **414**, 2923
 Li, Z.-Y., Ho, L. C., & Barth, A. J. 2017, *ApJ*, **845**, 87
 Li, Z.-Y., & Shen, J. 2012, *ApJL*, **757**, L7
 Li, Z.-Y., & Shen, J. 2015, *ApJL*, **815**, L20
 Li, Z.-Y., Shen, J., Rich, R. M., Kunder, A., & Mao, S. 2014, *ApJL*, **785**, L17
 Molaeinezhad, A., Falcon-Barroso, J., Martínez-Valpuesta, I., et al. 2016, *MNRAS*, **456**, 692
 Molloy, M., Smith, M. C., Evans, N. W., & Shen, J. 2015a, *ApJ*, **812**, 146
 Molloy, M., Smith, M. C., Shen, J., & Wyn Evans, N. 2015b, *ApJ*, **804**, 80
 Nataf, D. M., Udalski, A., Skowron, J., et al. 2015, *MNRAS*, **447**, 1535
 Opitsch, M., Fabricius, M. H., & Saglia, R. P. 2017, arXiv:1707.06652
 Patsis, P. A., Skokos, C., & Athanassoula, E. 2002, *MNRAS*, **337**, 578
 Patsis, P. A., Skokos, C., & Athanassoula, E. 2003, *MNRAS*, **342**, 69
 Pfenniger, D. 1984, *A&A*, **134**, 373
 Pfenniger, D., & Friedli, D. 1991, *A&A*, **252**, 75
 Qin, Y., Shen, J., Li, Z.-Y., et al. 2015, *ApJ*, **808**, 75
 Raha, N., Sellwood, J. A., James, R. A., & Kahn, F. D. 1991, *Natur*, **352**, 411
 Saburova, A. S., Katkov, I. Y., Khoperskov, S. A., Zasov, A. V., & Uklein, R. I. 2017, *MNRAS*, **470**, 20
 Sánchez, S. F., Kennicutt, R. C., Gil de Paz, A., et al. 2012, *A&A*, **538**, A8
 Seidel, M. K., Falcón-Barroso, J., Martínez-Valpuesta, I., et al. 2015, *MNRAS*, **451**, 936
 Sellwood, J. A., & McGaugh, S. S. 2005, *ApJ*, **634**, 70
 Shen, J., Rich, R. M., Kormendy, J., et al. 2010, *ApJL*, **720**, L72
 Skokos, C., Patsis, P. A., & Athanassoula, E. 2002a, *MNRAS*, **333**, 847
 Skokos, C., Patsis, P. A., & Athanassoula, E. 2002b, *MNRAS*, **333**, 861
 van der Marel, R. P., & Franx, M. 1993, *ApJ*, **407**, 525
 Zhou, Y., Shen, J., Liu, C., et al. 2017, *ApJ*, **847**, 74