

Welcome! This guide has been created for you to read as you walk through the exhibition. There are lots of different things to notice in a gallery. Why not take a few minutes to write down your thoughts before you look at the show...

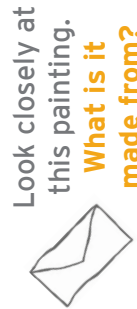
What do you expect to see?



Swallow Hard: The Lancaster Dinner Service, 2007



Freedom and Change, 1984



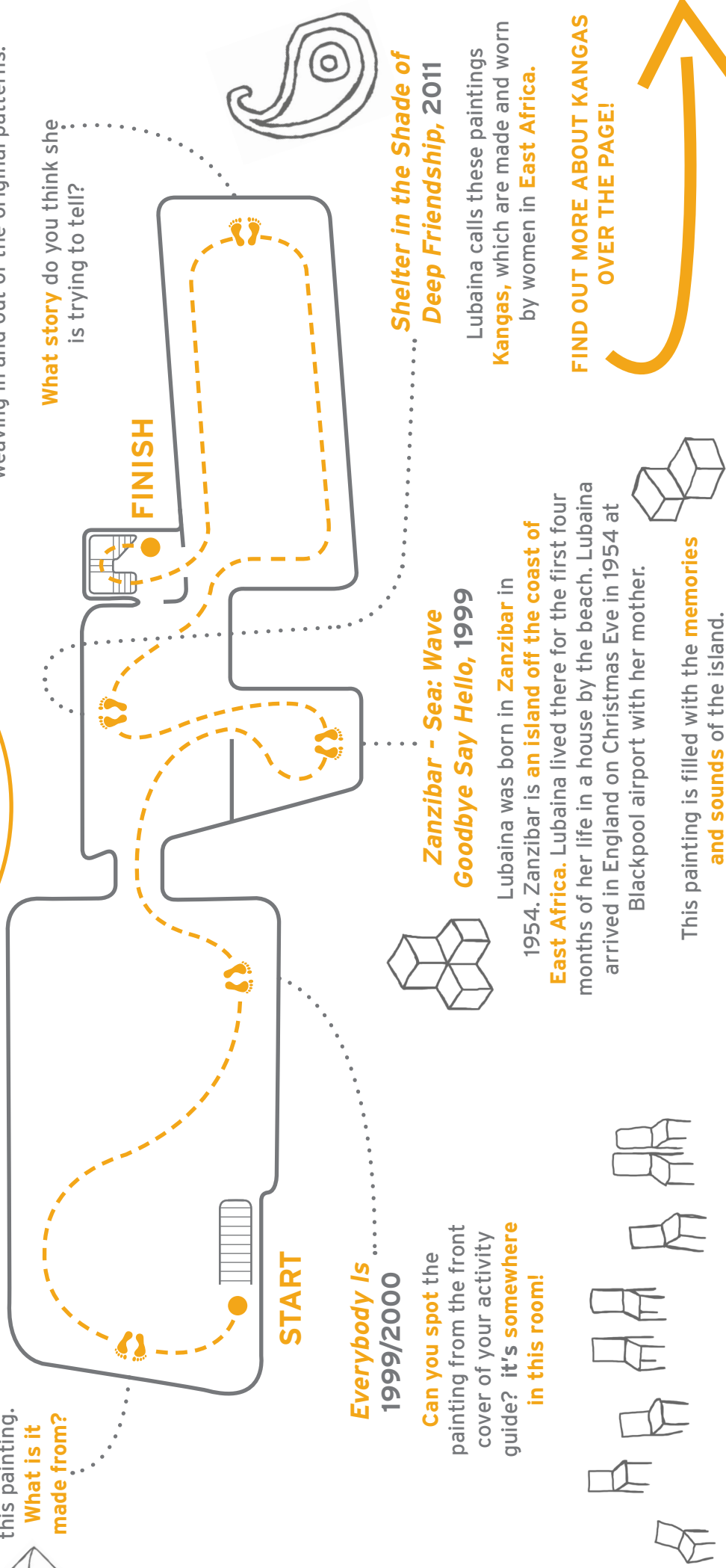
Look closely at this painting. What is it made from?



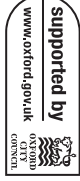
Lubaina has bought over 100 **plates, jugs and dishes** from the shops and markets of Lancaster and painted different pictures and patterns on top.

Lubaina is **telling a story** on these dishes, weaving in and out of the original patterns.

What story do you think she is trying to tell?



LUBAINA HIMID: INVISIBLE STRATEGIES



30 PEMBROKE ST
OX1 1BP
+44 (0)1865 722733
WWW.MODERNARTOXFORD.ORG.UK



Lubaina Himid, Plan B, Everybody Is, 1999/2000.
Courtesy the artist & Hollybush Gardens

START

About the Artist

Lubaina Himid is an artist who creates **paintings** to explore **hidden histories**. Her paintings uncover messages of fabrics in vivid colours and patterns **inspired by** different journeys and a sense of **identity and family**.



How many **faces** can you spot in the exhibition?



The more you learn about colour,
the more there is to see!

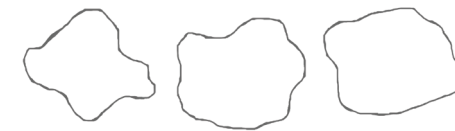


The Colour Wheel

Lubaina uses **strong colours** and **simple shapes** in her paintings.

A colour wheel is a simple tool to help you choose which colours **best go together**.

From the Colour wheel can you pick out the **primary colours**?



What do you think now?

Now you have seen the exhibition, **what do you think**?

Are your thoughts different to before you looked around the show?

Take a few moments to **write or draw something** and then check to see what you did at the beginning.



Want to learn more?

We have lots of free **workshops** and events for children at Modern Art Oxford. Please **ask our Gallery staff** to find out more!

FINISH

About the Kanga

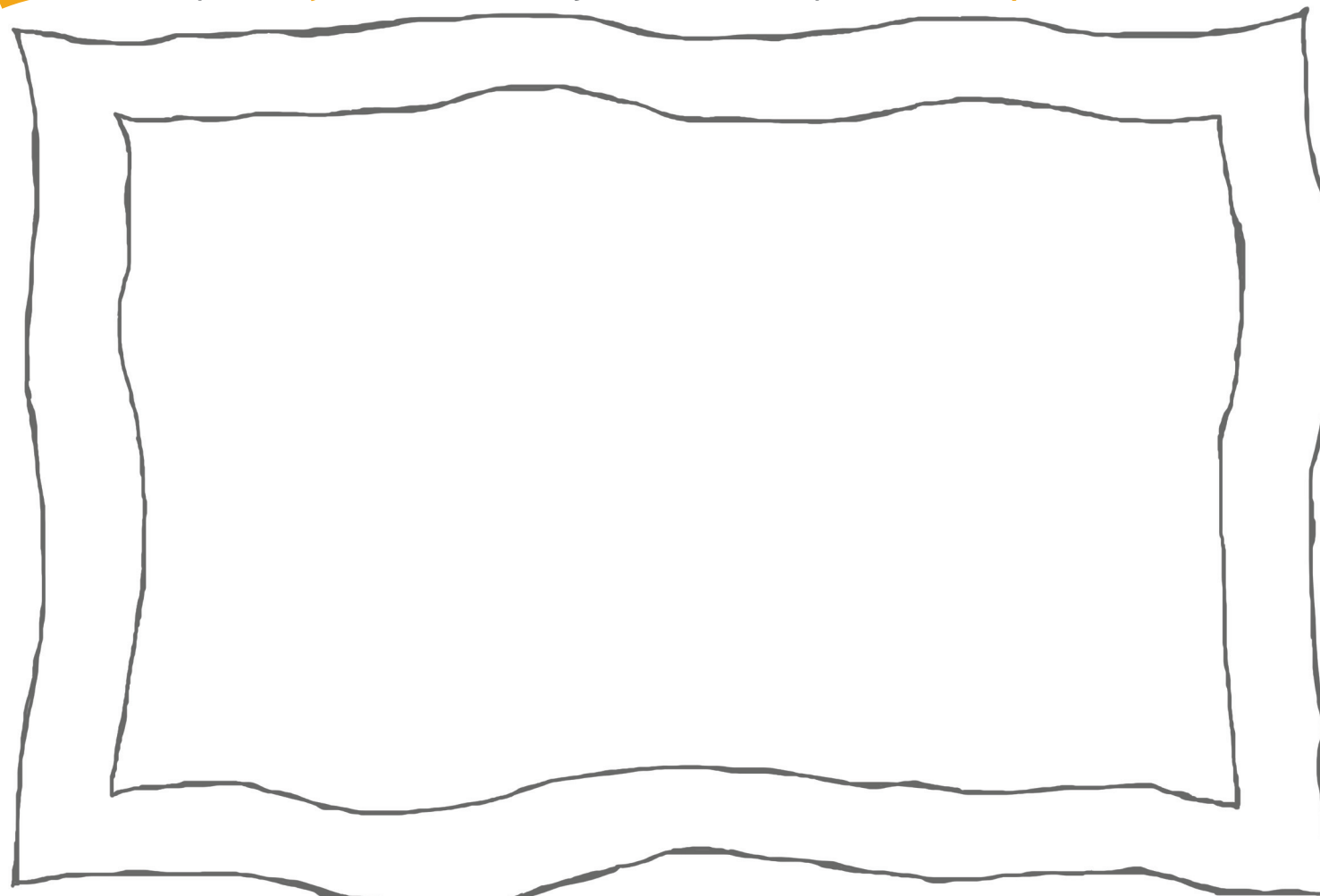
The **Kanga** is a rectangular piece of cotton cloth with a border all around it. It is printed with bright colours and bold designs and is as long as the stretch of your open arms and wide enough to cover you from neck to knee.

Kangas originally come from **East Africa**. Fabric is cut into two separate pieces and then worn as a pair - called a **'Doti'**.

From the choice of material to the **design** and **pattern**, we can tell a lot about the time that they were made and the people who made them.

The Kanga is protective and decorative, but it is also all about **sending a message**. It might be a message of love and reassurance or it could be a message of warning. The message on a Kanga could be a way of **expressing yourself**.

Can you **design and colour** a Kanga that tells a story about **where you are from**?



What colours would you choose? And what would be your **important message**?