



people's architecture office adds wheels to expandable canopy

220 132 196 93

Facebook Twitter Pinterest Google+

people's architecture office adds wheels to expandable + portable canopy (above) the 'people's canopy' is thought as architecture for events and architecture as an event in itself all images courtesy of people's architecture office (pao), icp, bernie blackburn, tony worrall, neon creative studios

designed by beijing's people's architecture office, the 'people's canopy' is thought as architecture for events and architecture as an event in itself. the two-story high expandable roof structure is set on bicycle wheels so that it can be cycled by citizens, paraded around the city, and stretched to the length of entire streets, linking disconnected public spaces. the canopy can collapse to the size of a double-decker bus so that it can be pedaled from one location to another. when parked, it can be opened like an accordion to 12-meters in length at a span of ten meters, thus turning unused areas into ones for pedestrians and events.



the two-story high expandable roof structure is set on bicycle wheels so that it can be cycled by citizens

the design was first commissioned by the city of preston in the UK and in certain places, an art program for urban intervention and events. the aim of the program is to re-energize the city's grand but declining historic center. urban sprawl and air conditioned shopping malls have driven residents away from the open streets and public spaces of the rainy city. the design references expandable canopies popular in southern china typically used by small businesses like restaurants and bars to temporarily expand their spaces into parking lots and public sidewalks.



the structure can be paraded around the city, and stretched to the length of entire streets

following their debut in preston, the 'people's canopies' were features in the 2015 bi-city biennale of urbanism/architecture in hong kong. installed in kowloon park, they were continually relocated, expanded and contracted to support various public activities. events were planned for the canopies but the public was also encouraged to engage in unexpected ways.



when parked, it can be opened like an accordion to 12-meters in length at a span of ten meters



the aim of the program is to re-energize the city's grand but declining historic center



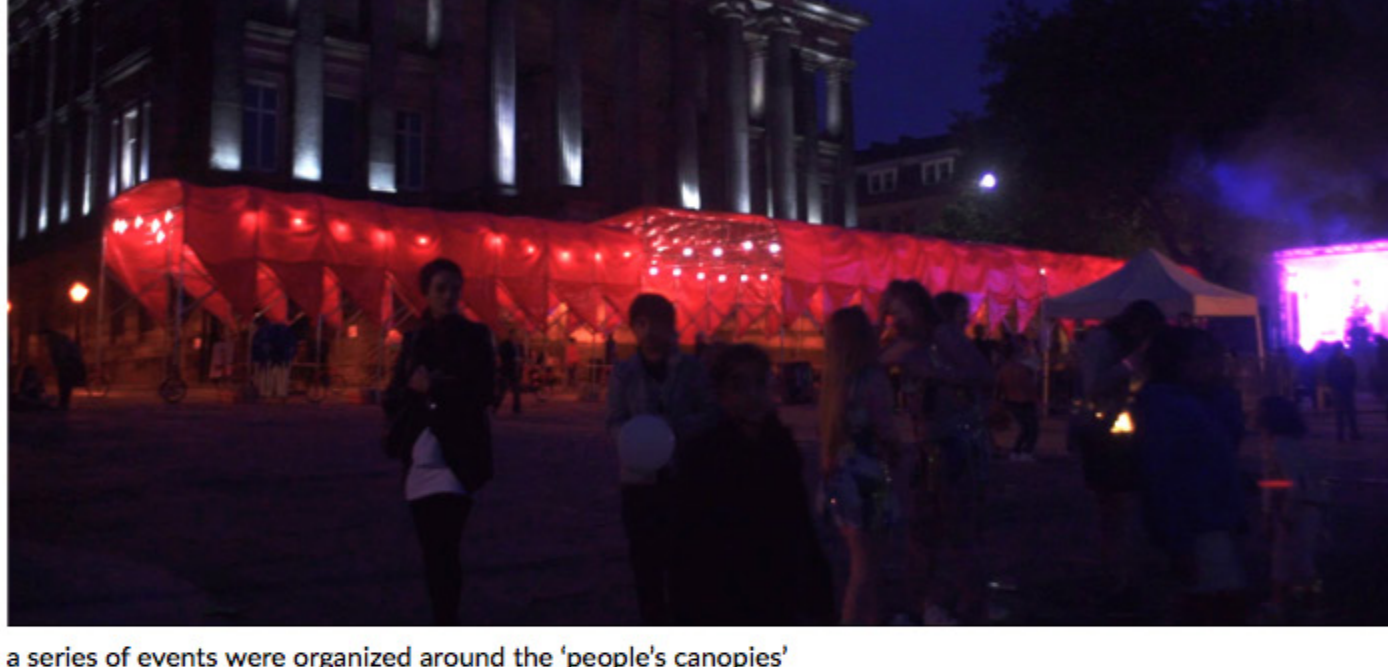
the design references expandable canopies popular in southern china typically used by small businesses



they temporarily expand their spaces into parking lots and public sidewalks



over a dozen canopies were designed and fabricated in beijing



a series of events were organized around the 'people's canopies'



festival attendees under the canopy



the canopy can collapse to the size of a double-decker bus



film screening of hong kong trilogy

project info:
client: in certain places
location: preston, lancashire, england
date of completion: september 2015
principal: he zhe, james shen, zang feng
project team: xu xi, jiang hao, charlotte yu
photographer: people's architecture office (pao), icp, bernie blackburn, tony worrall, neon creative studios

designboom has received this project from our 'diy submissions' feature, where we welcome our readers to submit their own work for publication. see more project submissions from our readers [here](#).

edited by: juliana neira | designboom

Gao Tianxia feb 01, 2016

220 132 196 93

Facebook Twitter Pinterest Google+



publish your work

product library



people's architecture office (23 articles)

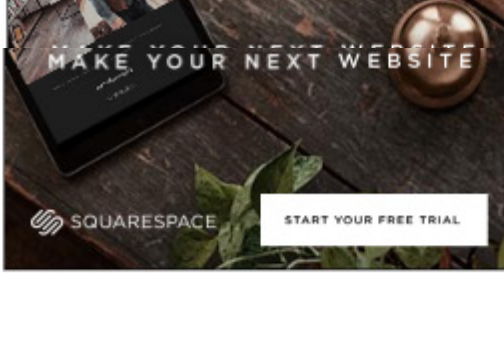
maze installation by people's architecture office references old beijing jan 23, 2017

people's architecture office design workspace in beijing's tech center jan 05, 2017

people's architecture office organizes residential complex in china as a city skyline dec 15, 2016

people's architecture office custom designs plugin house for historic beijing dec 05, 2016

PAO's prefabricated plugin tower reconsiders residential living in nov 29, 2016



popular now architecture!

renzo piano's pavilion of photography opens at château la coste in the south of france 25k views

david adjaye receives knighthood on behalf of HM queen elizabeth II 23k views

BAM! tops sustainable dwelling in argentina with verdant roof profile 21k views

zaha hadid architects reinterprets mayan architecture with luxury residences in 20k views

AstraZeneca's herzog & de meuron-designed HQ tops out in cambridge 19k views

portable and emergency architecture (123 articles)

the maids tent, a public indoor space for refugee camps apr 28, 2017

shigeru ban's disaster relief shelters made from bamboo and paper go on view in mar 27, 2017

MADWORKSHOP + USC architecture students address LA's homelessness crisis feb 21, 2017

provisional permanence: injecting civic spaces into refugee camps feb 16, 2017

BIVAK suggests urban nomad flats as property extensions above cities feb 08, 2017